

NE. | EXICO OIL CONSERVATION COMMISSIO
WELL LOCATION AND ACREAGE DEDICATION PLAT

Form C-102
Supersedes C-128
Effective 1-1-65

All distances must be from the outer boundaries of the Section.

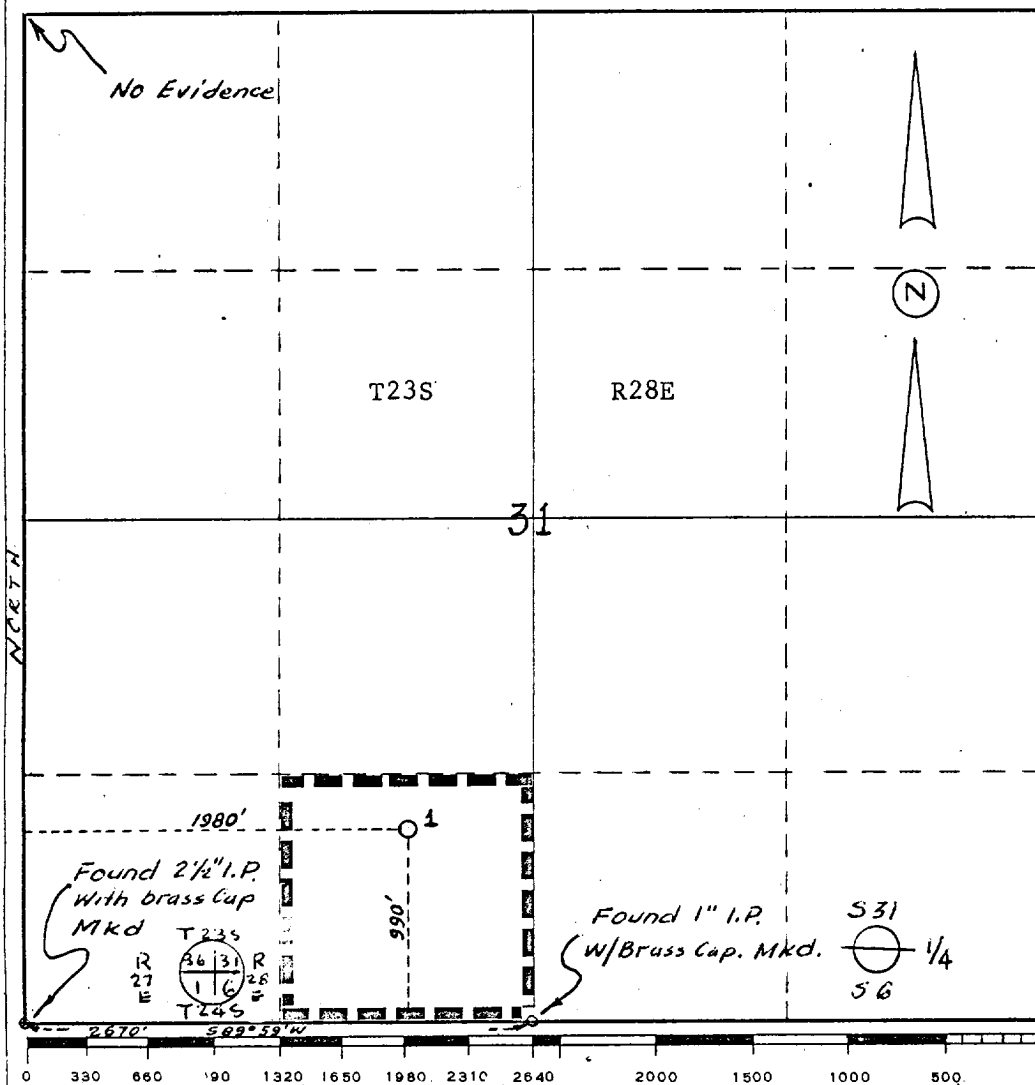
Operator Mobil Oil Corporation		P. O. Box 633 Midland, Texas		Lease Pardue		Well No. 1	
Unit Letter N	Section 31	Township 23S	Range 28E	County Eddy			
Actual Footage Location of Well: 990 feet from the South line and 1980 feet from the West line							
Ground Level Elev: 3095.2	Producing Formation Devonian		Pool Wildcat	Dedicated Acreage: 40 Acres			

1. Outline the acreage dedicated to the subject well by colored pencil or hachure marks on the plat below.
2. If more than one lease is dedicated to the well, outline each and identify the ownership thereof (both as to working interest and royalty).
3. If more than one lease of different ownership is dedicated to the well, have the interests consolidated by communitization, unitization, force-pooling, etc?

☐ Yes ☐ No If answer is "yes," type of consolidation UNITIZATION **RECEIVED JUN 21 1966**

If answer is "no," list the owners and tract descriptions which have actually been consolidated. (Use reverse side of this form if necessary.) **UNITIZATION**

No allowable will be assigned to the well until all interests have been consolidated (by communitization, unitization, forced-pooling, or otherwise) or until a non-standard unit, eliminating such interests, has been approved by the Commission.



CERTIFICATION

I hereby certify that the information contained herein is true and complete to the best of my knowledge and belief.

Name John H. Seerey, Jr.
Position Division Operations Engineer
Company Mobil Oil Corporation
Date June 17, 1966

I hereby certify that the well location shown on this plat was plotted from field notes of actual surveys made by me or under my supervision, and that the same is true and correct to the best of my knowledge and belief.

Date June 17, 1966
Registered Professional Engineer and/or Land Surveyor John H. Seerey, Jr.
Certificate No. 3572