

| | |
|------------------------|---|
| NO. OF COPIES RECEIVED | 5 |
| DISTRIBUTION | |
| SANTA FE | 1 |
| FILE | 1 |
| U.S.G.S. | 2 |
| LAND OFFICE | |
| OPERATOR | |

NEW MEXICO OIL CONSERVATION COMMISSION

Form C-101
Revised 1-1-65

| | |
|--------------------------------|---|
| 5A. Indicate Type of Lease | |
| STATE <input type="checkbox"/> | FEE <input checked="" type="checkbox"/> |

5. State Oil & Gas Lease No.

APPLICATION FOR PERMIT TO DRILL, DEEPEN, OR PLUG BACK

| | | | |
|---|--|---|--|
| 1a. Type of Work | | 7. Unit Agreement Name | |
| b. Type of Well OIL WELL <input checked="" type="checkbox"/> GAS WELL <input type="checkbox"/> OTHER <input type="checkbox"/> | | 8. Farm or Lease Name Guy A. Reed | |
| 2. Name of Operator Sun Oil Company | | 9. Well No. 2 | |
| 3. Address of Operator P. O. Box 2880, Dallas, Texas 75221 | | 10. Field and Pool, or Wildcat Und. Malaga (Delaware) | |
| 4. Location of Well UNIT LETTER L LOCATED 862.7 FEET FROM THE West LINE AND 2116.4 FEET FROM THE South LINE OF SEC. 24 TWP. 24S RGE. 28E NMPM | | 12. County Eddy | |
| 19. Proposed Depth 2800' | | 19A. Formation Olds (Delaware) | |
| 20. Rotary or C.T. Rotary | | | |
| 21. Elevations (Show whether DF, RT, etc.) 2943 (Ground) | | 21A. Kind & Status Plug. Bond \$10,000 Blanket Bond | |
| 21B. Drilling Contractor (Unknown) | | 22. Approx. Date Work will start When Approved | |

23.

PROPOSED CASING AND CEMENT PROGRAM

| SIZE OF HOLE | SIZE OF CASING | WEIGHT PER FOOT | SETTING DEPTH | SACKS OF CEMENT | EST. TOP |
|--------------|----------------|-----------------|---------------|-----------------|----------|
| 12-1/4" | 8-5/8" | 24 | 350' | 200 | Circ-top |
| 7-7/8" | 4-1/2" | 9.5 | 2800' | 200 | 1600' |

The 7-7/8" hole will be drilled using 2000 psi working pressure control equipment.

A Series 600 (2000 psi working pressure) well-head will be installed if successfully completed.

RECEIVED

DEC 8 1966

O. C. C.
ARTESIA, OFFICE

APPROVED BY
FOR OIL & GAS USE
(DRILLING CONTRACTOR)

EXPIRES 3-1-67

IN ABOVE SPACE DESCRIBE PROPOSED PROGRAM; IF PROPOSAL IS TO DEEPEN OR PLUG BACK, GIVE DATA ON PRESENT PRODUCTIVE ZONE AND PROPOSED NEW PRODUCTIVE ZONE. GIVE BLOWOUT PREVENTER PROGRAM, IF ANY.

I hereby certify that the information above is true and complete to the best of my knowledge and belief.

Signed Ross R. Sons, Jr. Title Asst. Regional Supt. Date December 5, 1966

(This space for State Use)

APPROVED BY W. A. Grissett TITLE OIL AND GAS INSPECTOR DATE DEC 8 1966

CONDITIONS OF APPROVAL, IF ANY:

Cement must be circulated to
surface behind 8 5/8" casing

NEW MEXICO OIL CONSERVATION COMMISSION
WELL LOCATION AND ACREAGE DEDICATION PLAT

RECEIVED

Form C-102
Supersedes C-128
Effective 1-1-65

DEC 8 1966

All distances must be from the outer boundaries of the Section.

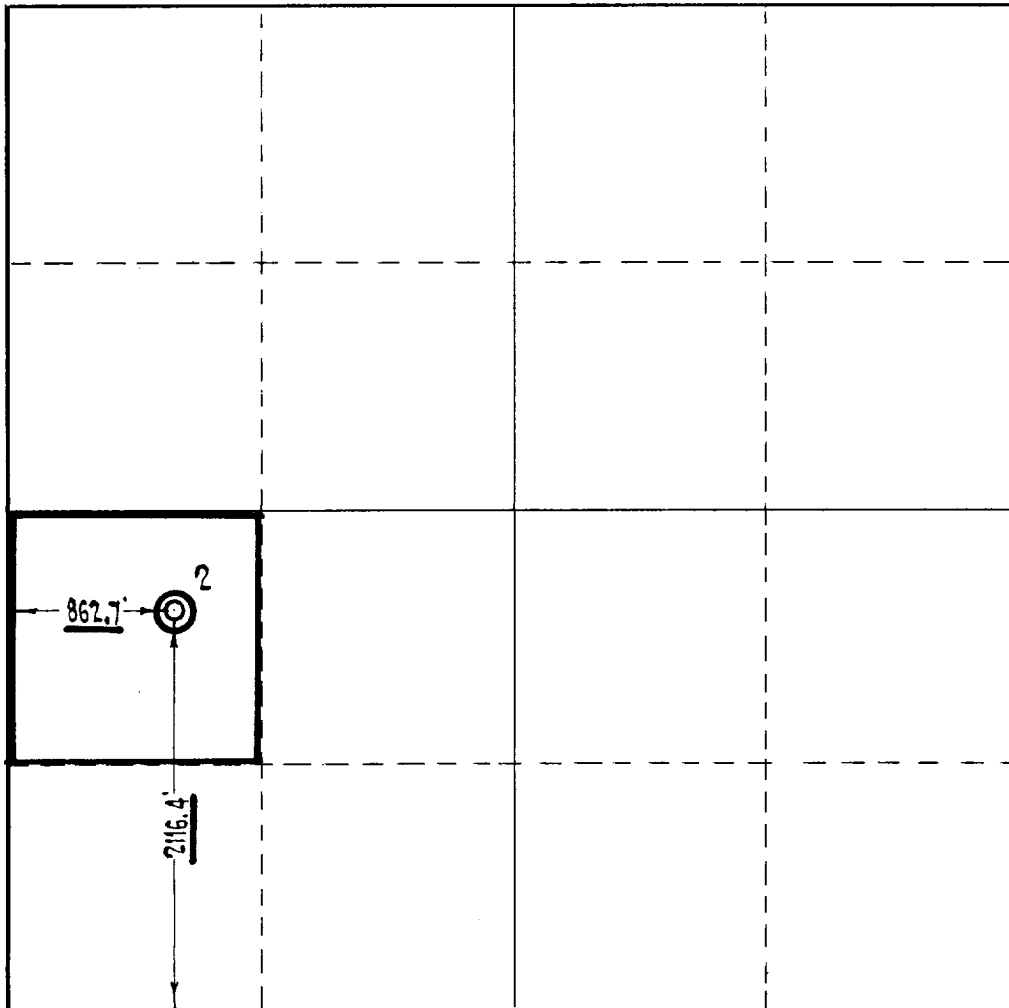
| | | | | | |
|---|---|-----------------------------|----------------------------|-----------------------|--|
| Operator Sun Oil Company | | Lease Guy A. Reed | | Well No. 2 | |
| Unit Letter L | Section 24 | Township 24S | Range 28E | County Eddy | |
| Actual Footage Location of Well: 862.7 feet from the West line and 2116.4 feet from the South line | | | | | |
| Ground Level Elev: 2943 | Producing Formation Olds (Delaware) | | Pool Und. Malaga | | Dedicated Acreage: 40.81 Acres |

1. Outline the acreage dedicated to the subject well by colored pencil or hachure marks on the plat below.
2. If more than one lease is dedicated to the well, outline each and identify the ownership thereof (both as to working interest and royalty).
3. If more than one lease of different ownership is dedicated to the well, have the interests of all owners been consolidated by communitization, unitization, force-pooling, etc?

☐ Yes ☐ No If answer is "yes," type of consolidation _____

If answer is "no," list the owners and tract descriptions which have actually been consolidated. (Use reverse side of this form if necessary.) _____

No allowable will be assigned to the well until all interests have been consolidated (by communitization, unitization, forced-pooling, or otherwise) or until a non-standard unit, eliminating such interests, has been approved by the Commission.



CERTIFICATION

I hereby certify that the information contained herein is true and complete to the best of my knowledge and belief.

Ross R. Cone, Jr.
Name

Ross R. Cone, Jr.

Position
Asst. Regional Supt.

Company
Sun Oil Company

Date
December 5, 1966

I hereby certify that the well location shown on this plat was plotted from field notes of actual surveys made by me or under my supervision, and that the same is true and correct to the best of my knowledge and belief.

Nov 22, 1966
Date Surveyed

R. K. Pappas
Registered Professional Engineer
and/or Land Surveyor

Texas # 5566
Certificate No.

