

NEW MEXICO OIL CONSERVATION COMMISSION
WELL LOCATION AND ACREAGE DEDICATION PLAT

Form C-102
Supersedes C-128
Effective 1-1-65

All distances must be from the outer boundaries of the Section.

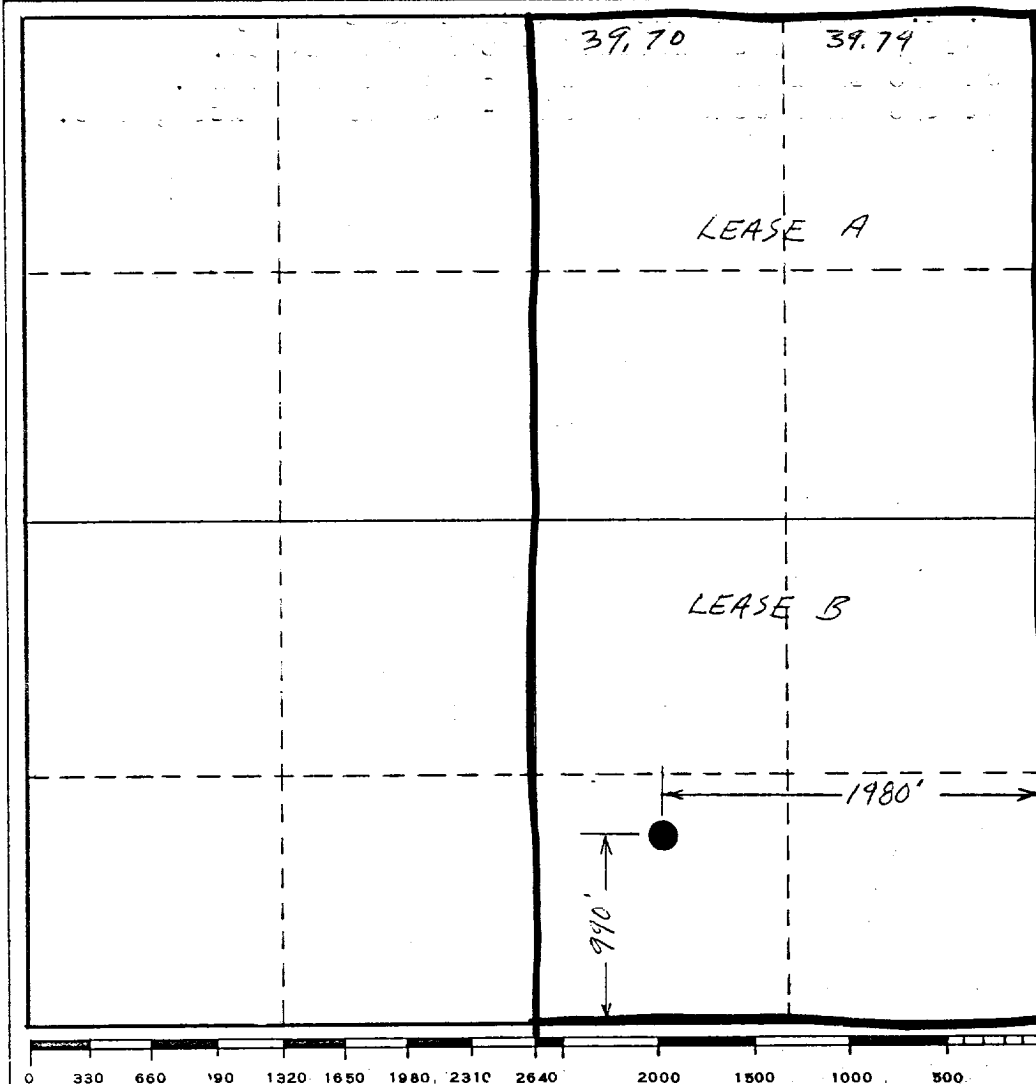
Operator Morris R. Antweil			Lease Missouri-New Mexico Land Co. Comm.		Well No. 1
Unit Letter 0	Section 6	Township 23-S	Range 27-E	County Eddy	
Actual Footage Location of Well: 990 feet from the South line and 1980 feet from the East line					
Ground Level Elev. 3198'	Producing Formation Morrow		Pool South Carlsbad Morrow		Dedicated Acreage: 319.49 320 Acres

1. Outline the acreage dedicated to the subject well by colored pencil or hachure marks on the plat below.
2. If more than one lease is dedicated to the well, outline each and identify the ownership thereof (both as to working interest and royalty).
See reverse side.
3. If more than one lease of different ownership is dedicated to the well, have the interests of all owners been consolidated by communitization, unitization, force-pooling, etc?

☒ Yes ☐ No If answer is "yes," type of consolidation **Communitization**

If answer is "no," list the owners and tract descriptions which have actually been consolidated. (Use reverse side of this form if necessary.)

No allowable will be assigned to the well until all interests have been consolidated by communitization, unitization, forced-pooling, or otherwise) or until a non-standard unit, eliminating such interests, has been approved by the Commission.



JUL 30 1970
CERTIFICATION

I hereby certify that the information contained herein is true and complete to the best of my knowledge and belief.

R. M. Williams
Name
R. M. Williams
Position
Agent
Company
Morris R. Antweil
Date
29 July 70.

I hereby certify that the well location shown on this plat was plotted from field notes of actual surveys made by me or under my supervision, and that the same is true and correct to the best of my knowledge and belief.

Date Surveyed
Registered Professional Engineer and/or Land Surveyor
Certificate No.

Lease A - NE/4 Section 6-23-27

Working Interest Ownership:

3/8 - Morris R. Antweil
3/8 - Mabee Petroleum Corp.
1/4 - Delta Drilling Co.

Royalty Interest Ownership:

3/4 of 1/8 R.I. - H. P. Hemler
1/4 of 1/8 R. I. - J. H. Aschbacher
1/2 of 1/8 ORRI - Mobil Oil Corp.
1/2 of 1/8 ORRI - Pennzoil United, Inc.

Lease B - SE/4 Section 6-23-27

Working Interest Ownership:

3/8 - Morris R. Antweil
3/8 - Mabee Petroleum Corp.
1/4 - Delta Drilling Co.

Royalty Interest Ownership:

1/8 R. I. - Missouri-New Mexico Land Company
1/16 of 7/8 ORRI to 10,831' - Cal Mon Oil Co.
1/2 of 1/8 ORRI below 10,831' - Mobil Oil Corp.
1/2 of 1/8 ORRI below 10,831' - Pennzoil United, Inc.