

NEW MEXICO OIL CONSERVATION COMMISSION
WELL LOCATION AND ACREAGE DEDICATION FORM

Form C-102
Supersedes C-128
Effective 1-1-65

All distances must be from the outer boundaries of the Section.

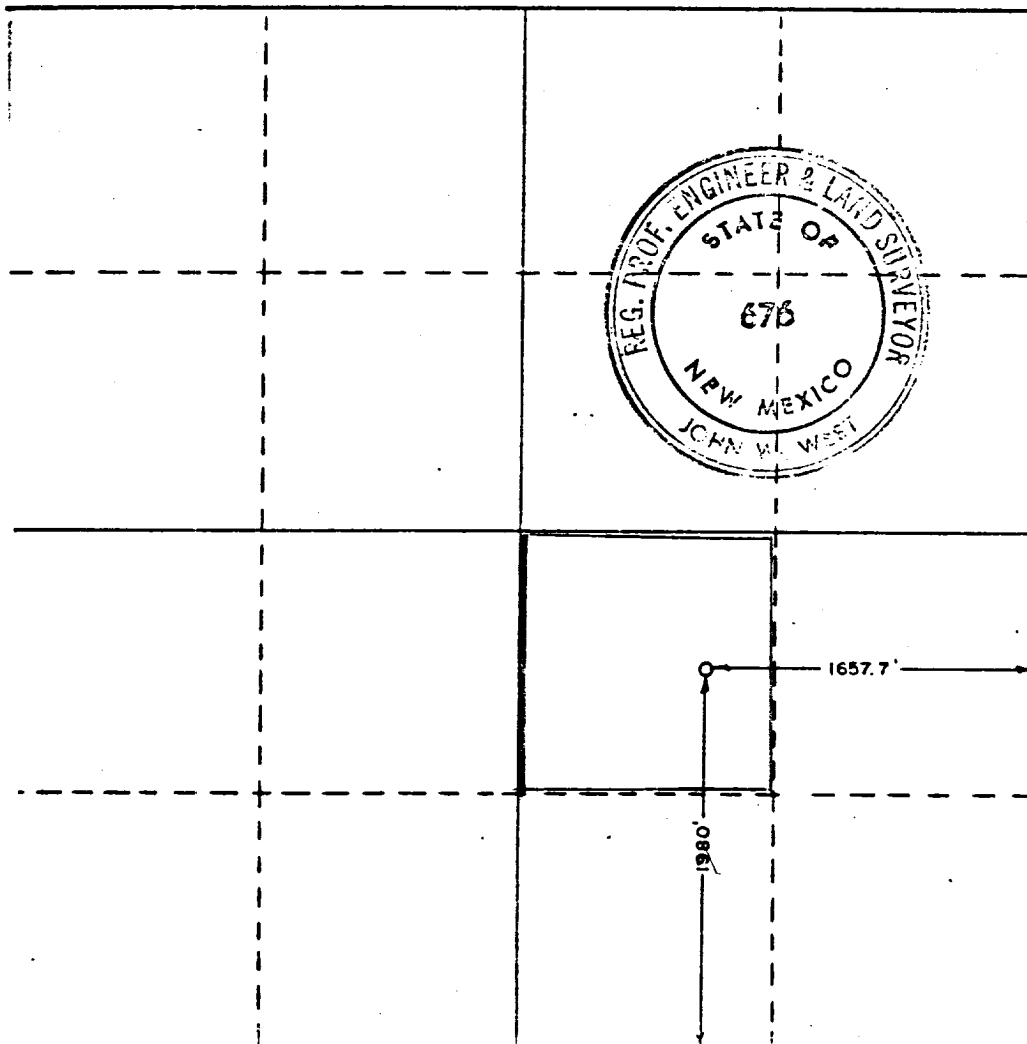
Operator BELCO PETROLEUM CORP.			Lease JAMES RANCH UNIT		Well No. 3
Unit Letter J	Section 1	Township 23 SOUTH	Range 30 EAST	County EDDY	
Actual Footage Location of Well: 1980 feet from the SOUTH line and 1657.7 feet from the EAST line					
Ground Level Elev. 3288.	Producing Formation Devonian	Pool Wildcat	Dedicated Acreage: 40 Acres		

1. Outline the acreage dedicated to the subject well by colored pencil or hachure marks on the plat below.
2. If more than one lease is dedicated to the well, outline each and identify the ownership thereof (both as to working interest and royalty).
3. If more than one lease of different ownership is dedicated to the well, have the interests of all owners been consolidated by communitization, unitization, force-pooling, etc?

☒ Yes ☐ No If answer is "yes," type of consolidation Unitization

If answer is "no," list the owners and tract descriptions which have actually been consolidated. (Use reverse side of this form if necessary.)

No allowable will be assigned to the well until all interests have been consolidated (by communitization, unitization, forced-pooling, or otherwise) or until a non-standard unit, eliminating such interests, has been approved by the Commission.



CERTIFICATION

I hereby certify that the information contained herein is true and complete to the best of my knowledge and belief.

Name
J. N. Howell
J. N. Howell

Position
Division Engineer

Company
Belco Petroleum Corporation

Date
8-23-71

I hereby certify that the well location shown on this plat was plotted from field notes of actual surveys made by me or under my supervision, and that the same is true and correct to the best of my knowledge and belief.

JUNE 9, 1969

Date Surveyed
John W. West
Registered Professional Engineer
and/or Land Surveyor

Certificate No.
676