

UNITED STATES
DEPARTMENT OF THE INTERIOR
GEOLOGICAL SURVEYSUBMIT IN 1 ICATE*
(Other instructions on
reverse side)Form approved.
Budget Bureau No. 42-R1425.

Copy to 4

30-215-20285

APPLICATION FOR PERMIT TO DRILL, DEEPEN, OR PLUG BACK

1a. TYPE OF WORK

DRILL ☒DEEPEN ☐PLUG BACK ☐

b. TYPE OF WELL

OIL
WELL ☐GAS
WELL ☒

OTHER

SINGLE
ZONE ☒MULTIPLE
ZONE ☐

2. NAME OF OPERATOR

Cities Service Oil Company

3. ADDRESS OF OPERATOR

P. O. Box 69, Hobbs, New Mexico

4. LOCATION OF WELL (Report location clearly and in accordance with any State requirements.*)

At surface

740' FNL & 2310' FEL, Sec. 30-23S-22E

At proposed prod. zone

Same as above

14. DISTANCE IN MILES AND DIRECTION FROM NEAREST TOWN OR POST OFFICE*

7 Mi. North & 21 West of White City, New Mexico

15. DISTANCE FROM PROPOSED*

LOCATION TO NEAREST

PROPERTY OR LEASE LINE, FT.

(Also to nearest drlg. unit line, if any)

7695.6'

18. DISTANCE FROM PROPOSED LOCATION*

TO NEAREST WELL, DRILLING, COMPLETED,
OR APPLIED FOR, ON THIS LEASE, FT.

-

16. NO. OF ACRES IN LEASE

11,243.14

19. PROPOSED DEPTH

5,400'

17. NO. OF ACRES ASSIGNED
TO THIS WELL

320 286.53

20. ROTARY OR CABLE TOOLS

Rotary

12. COUNTY OR PARISH

Eddy

13. STATE

N. M.

22. APPROX. DATE WORK WILL START*

3-15-70

PROPOSED CASING AND CEMENTING PROGRAM

SIZE OF HOLE	SIZE OF CASING	WEIGHT PER FOOT	SETTING DEPTH	QUANTITY OF CEMENT
17 1/2	13 3/8	48	100	Circulate (150 sx)
12 1/4	9 5/8	32.3	1450	Circulate (700 sx)
8 3/4	5 1/2	14	5400	300 sx

BOP program will consist of 1 set blind rams, 1 set of drill pipe rams.

Proposal is to drill to Mississippian at 5400' and test Morrow Sands, Penn and Abo formations.

The West Hupache Unit covers the following area in Eddy Co., New Mexico:

Sections 13, 24, 25, 36-22S-21E.

Sections 17, 18, 19, 20, 21, 28, 29, 30, 31, 32, 33-23S-22E.

Sections 4, 5, 6-24S-22E.

Linitiation Pending

RECEIVED

FEB 16 1970

RECEIVED

FEB 13 1970

U. S. GEOLOGICAL SURVEY

IN ABOVE SPACE DESCRIBE PROPOSED PROGRAM: If proposal is to deepen or plug back, give data on present productive zone and proposed new productive zone. If proposal is to drill or deepen directionally, give pertinent data on subsurface locations and measured and true vertical depths. Give blowout preventer program, if any.

SIGNED

E. J. Funder

TITLE District Manager

DATE 2-12-70

(This space for Federal or State office use)

PERMIT NO.

APPROVED BY

TITLE

DECLARED WATER BASIN

C MENT BEHIND THE 138'
CASING MUST BE CIRCULATED 98'

APPROVED

THIS APPROVAL IS RESCINDED IF OPERATIONS
ARE NOT COMMENCED WITHIN 3 MONTHS.

EXPIRES MAY 13 1970 See Instructions On Reverse Side

NOTIFY USGS IN SUFFICIENT TIME TO
WITNESS CEMENTING THE 98' CASING.

R. L. BEEKMA

Instructions

General: This form is designed for submitting proposals to perform certain well operations, as indicated, on all types of lands and leases for appropriate action by either a Federal or a State agency, or both, pursuant to applicable Federal and/or State laws and regulations. Any necessary special instructions concerning the use of this form and the number of copies to be submitted, particularly with regard to local, area, or regional procedures and practices, either are shown below or will be issued by, or may be obtained from, the local Federal and/or State office.

Item 1: If the proposal is to redrill to the same reservoir at a different subsurface location or to a new reservoir, use this form with appropriate notations. Consult applicable State or Federal regulations concerning subsequent work proposals or reports on the well.

Item 4: If there are no applicable State requirements, locations on Federal or Indian land should be described in accordance with Federal requirements. Consult local applicable State or Federal office for specific instructions.

Item 14: Needed only when location of well cannot readily be found by road from the land or lease description. A plat, or plats, separate or on this reverse side, showing the roads to, and the surveyed location of, the well, and any other required information, should be furnished when required by Federal or State agency offices.

Items 15 and 18: If well is to be, or has been directionally drilled, give distances for subsurface location of hole in any present or objective production zone.

Item 22: Consult applicable Federal or State regulations, or appropriate officials, concerning approval of the proposal before operations are started.

**NEW MEXICO OIL CONSERVATION COMMISSION
WELL LOCATION AND ACREAGE DEDICATION PLAT**

Form C-102
Supersedes C-128
Effective 1-1-65

All distances must be from the outer boundaries of the Section.

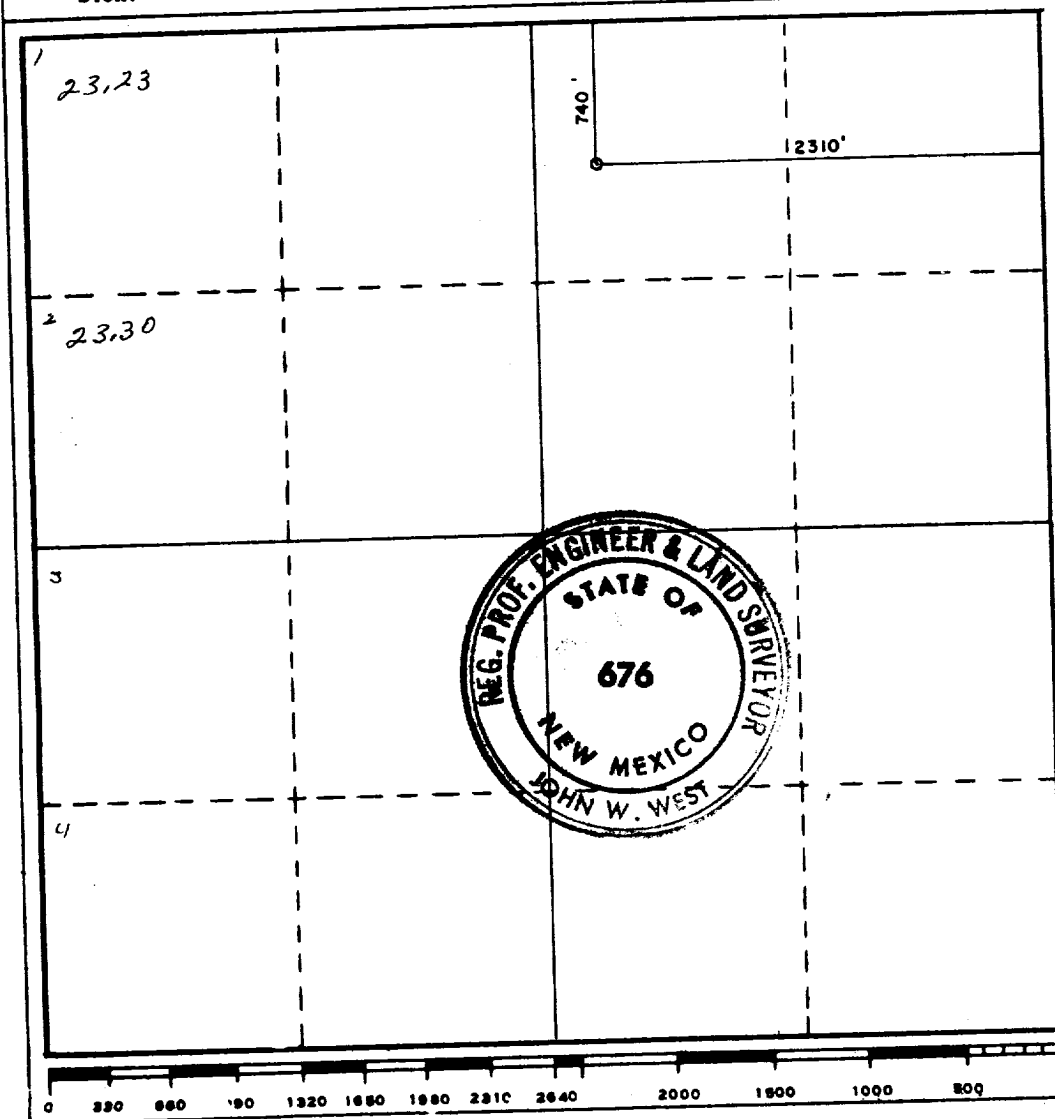
Operator CITIES SERVICE OIL CO.			Lease WEST HUAPACHE UNIT		Well No. 1
Unit Letter B	Section 30	Township 23 SOUTH	Range 22 EAST	County EDDY	
Actual Footage Location of Well: 740 feet from the NORTH line and 2310 feet from the EAST line					
Ground Level Elev. 5428	Producing Formation Wildcat	Pool <i>Wildcat</i> Undesignated		Dedicated Acreage: 320.28653 Acres	

1. Outline the acreage dedicated to the subject well by colored pencil or hachure marks on the plat below.
2. If more than one lease is dedicated to the well, outline each and identify the ownership thereof (both as to working interest and royalty).
3. If more than one lease of different ownership is dedicated to the well, have the interests of all owners been consolidated by communitization, unitization, force-pooling, etc?

☒ Yes ☐ No If answer is "yes," type of consolidation Unitization

If answer is "no," list the owners and tract descriptions which have actually been consolidated. (Use reverse side of this form if necessary.) _____

No allowable will be assigned to the well until all interests have been consolidated (by communitization, unitization, forced-pooling, or otherwise) or until a non-standard unit, eliminating such interests, has been approved by the Commission.



CERTIFICATION

I hereby certify that the information contained herein is true and complete to the best of my knowledge and belief.

Name *Larry S. Soto*
 Position *District Manager Engineer*
 Company **Cities Service Oil Company**
 Date **2-12-70**

I hereby certify that the well location shown on this plat was plotted from field notes of actual surveys made by me or under my supervision, and that the same is true and correct to the best of my knowledge and belief.

Date Surveyed
FEBRUARY 11, 1970

Registered Professional Engineer and/or Land Surveyor

John W. West
 Certificate No. **676**