

NEW MEXICO OIL CONSERVATION COMMISSION
WELL LOCATION AND ACREAGE DEDICATION PLAT

Form C-102
Supersedes C-128
Effective 1-1-65

All distances must be from the outer boundaries of the Section.

Operator TEXACO Inc.		Lease New Mexico "DD" State Gas Com.		Well No. 1
Unit Letter G	Section 32	Township 24 South	Range 26 East	County Eddy
Actual Footage Location of Well: 1655 feet from the North line and 2310 feet from the East line Sec. 32				
Ground Level Elev. 3415'	Producing Formation Strawn	Pool White City-Pennsylvanian	Dedicated Acreage: 640 Acres	

- Outline the acreage dedicated to the subject well by colored pencil or hachure marks on the plat below.
- If more than one lease is dedicated to the well, outline each and identify the ownership thereof (both as to working interest and royalty).
- If more than one lease of different ownership is dedicated to the well, have the interests of all owners been consolidated by communitization, unitization, force-pooling, etc?

RECEIVED

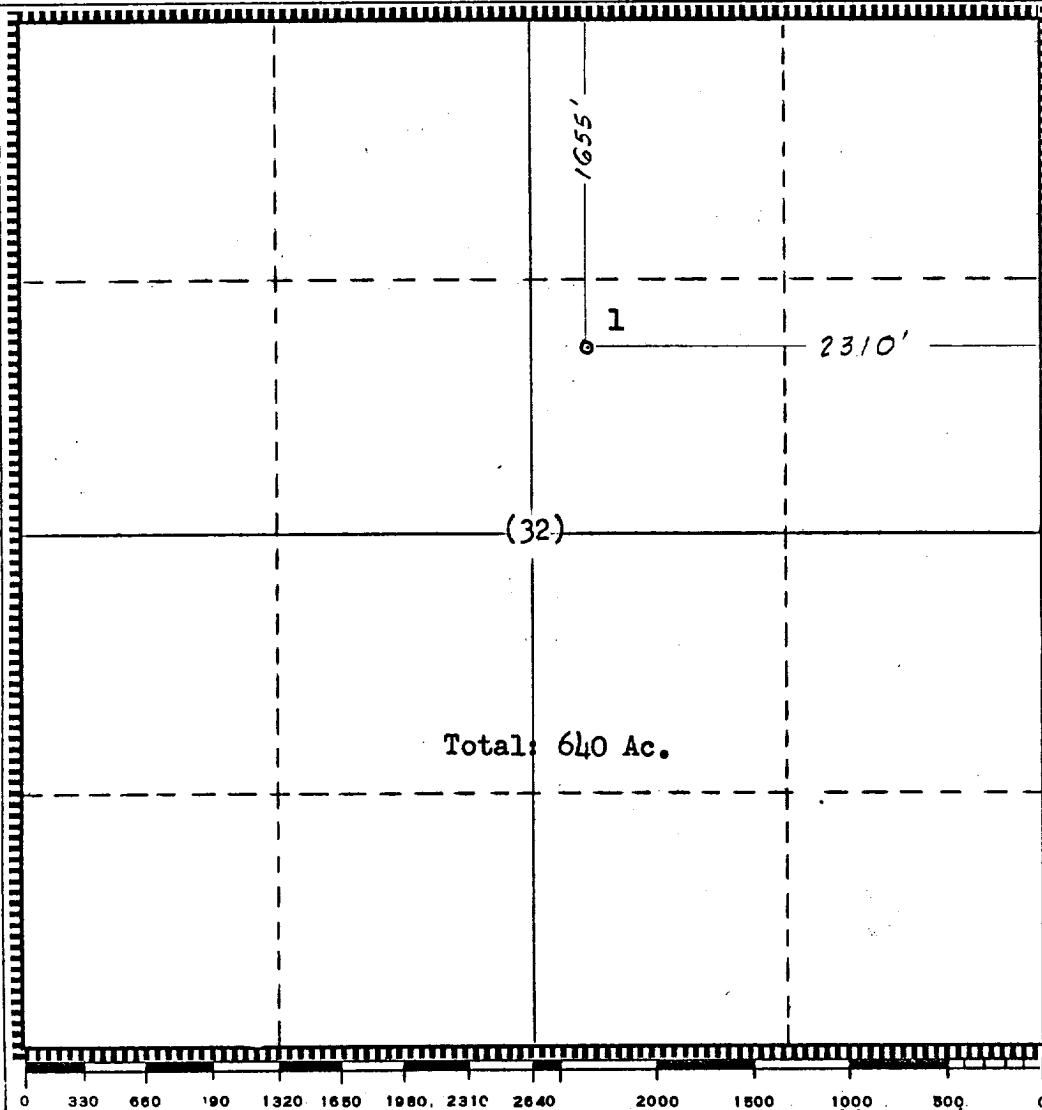
APR 26 1970

ARTERIAL OFFICE

☒ Yes ☐ No If answer is "yes," type of consolidation Communitization Agreement

If answer is "no," list the owners and tract descriptions which have actually been consolidated. (Use reverse side of this form if necessary.)

No allowable will be assigned to the well until all interests have been consolidated (by communitization, unitization, forced-pooling, or otherwise) or until a non-standard unit, eliminating such interests, has been approved by the Commission.



CERTIFICATION

I hereby certify that the information contained herein is true and complete to the best of my knowledge and belief.

B. L. Eiland

Name

B. L. Eiland

Position

Civil Engineer

Company

TEXACO Inc.

Date

4/17/70

I hereby certify that the well location shown on this plat was plotted from field notes of actual surveys made by me or under my supervision, and that the same is true and correct to the best of my knowledge and belief.

Date Surveyed

4/16/70

Registered Professional Engineer and/or Land Surveyor

B. L. Eiland
B. L. Eiland

Certificate No.

4386