

NEW MEXICO OIL CONSERVATION COMMISSION
WELL LOCATION AND ACREAGE DEDICATION PLAT

Form C-102
Supersedes C-128
Effective 1-1-65

All distances must be from the outer boundaries of the Section.

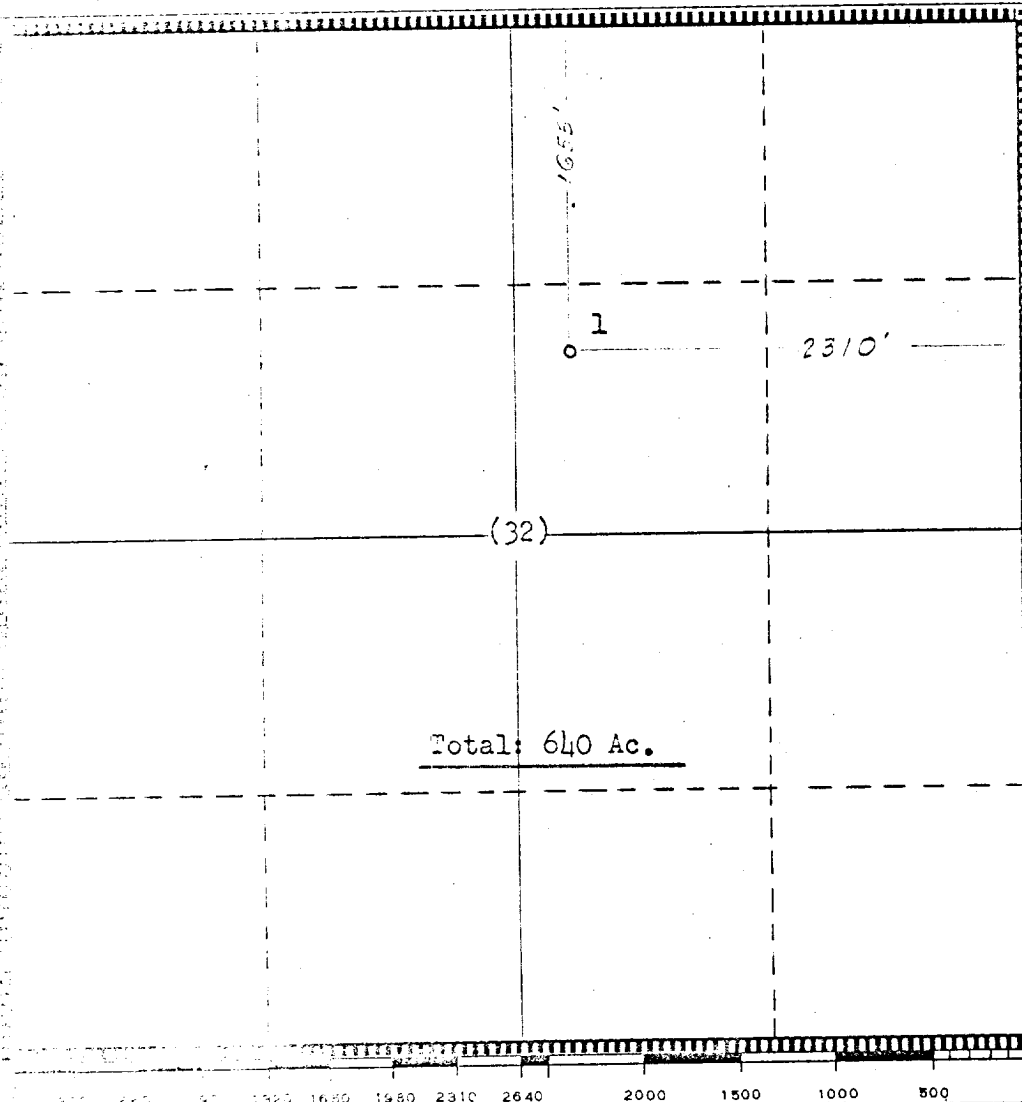
Owner Texaco Inc.		Lease New Mexico "DD" State Gas Com.		Well No. 1
Section 32	Township 24 South	Range 26 East	County Fddy	
Line and North		2310 feet from the East		Line Sec. 32
Pool White City-Pennsylvanian		Dedicated Acreage 640 Acres		

- Outline the acreage dedicated to the subject well by colored pencil or hatchure marks on the plat below.
- If more than one lease is dedicated to the well, outline each and identify the ownership thereof (both as to working interest and royalty).
- If more than one lease of different ownership is dedicated to the well, have the interests of all owners been consolidated by communitization, unitization, force-pooling, etc?

☐ Yes ☐ No If answer is "yes," type of consolidation Communitization Agreement

If answer is "no," list the owners and tract descriptions which have actually been consolidated. (Use reverse side of this form if necessary.)

No allowable will be assigned to the well until all interests have been consolidated (by communitization, unitization, force-pooling, or otherwise) or until a non-standard unit, eliminating such interests, has been approved by the Commission.



CERTIFICATION	
I hereby certify that the information contained herein is true and complete to the best of my knowledge and belief.	
Name	J. J. Velten
Position	Division Civil Engineer
Company	TEXACO Inc.
Date	5/31/72
I hereby certify that the well location shown on this plat was plotted from field notes of actual surveys made by me or under my supervision, and that the same is true and correct to the best of my knowledge and belief.	
Date Surveyed	4/16/70
Registered Professional Engineer and/or Land Surveyor	J. J. Velten
Certificate No.	8174

RECEIVED

JUN 1 1972

OIL CONSERVATION COMM.
HOBBS, N. M.