

NEW MEXICO OIL CONSERVATION COMMISSION  
WELL LOCATION AND ACREAGE DEDICATION PLAT

Form C-102  
Supersedes C-128  
Effective 1-1-65

All distances must be from the outer boundaries of the Section

Operator SAMEDAN OIL CORP.		Lease UNION STATE		Well No. 1
Unit Letter J	Section 19	Township 23 SOUTH	Range 26 EAST	County EDDY
Actual Footage Location of Well: 1980 feet from the SOUTH line and 2185.4 feet from the EAST line				
Ground Level Elev. N.A.	Producing Formation Pennsylvanian (Morrow)	Pool Wildcat	Dedicated Acreage: 320 Acres	

- Outline the acreage dedicated to the subject well by colored pencil or hachure marks on the plat below.
- If more than one lease is dedicated to the well, outline each and identify the ownership thereof (both as to working interest and royalty).
- If more than one lease of different ownership is dedicated to the well, have the interests of all owners been consolidated by communitization, unitization, force-pooling, etc?

☐ Yes ☒ No If answer is "yes," type of consolidation \_\_\_\_\_

If answer is "no," list the owners and tract descriptions which have actually been consolidated. (Use reverse side of this form if necessary.) See reverse side

No allowable will be assigned to the well until all interests have been consolidated (by communitization, unitization, forced-pooling, or otherwise) or until a non-standard unit, eliminating such interests, has been approved by the Commission.

CERTIFICATION

I hereby certify that the information contained herein is true and complete to the best of my knowledge and belief.

Name  
Clifford W. Matthews

Position  
Division Manager

Company  
Samedan Oil Corporation

Date  
JUNE 2, 1970

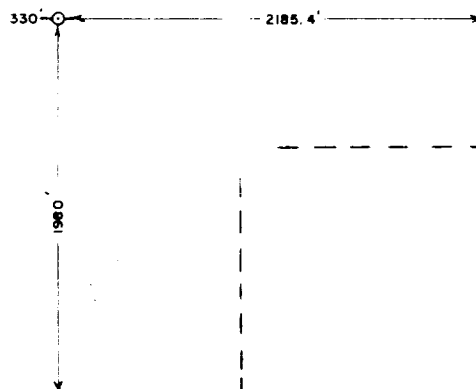
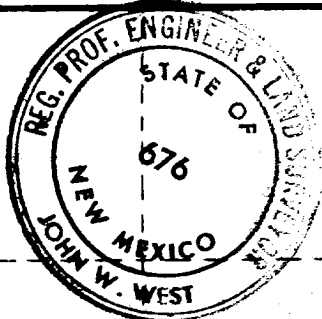
I hereby certify that the well location shown on this plat was plotted from field notes of actual surveys made by me or under my supervision, and that the same is true and correct to the best of my knowledge and belief.

Date Surveyed  
JUNE 2, 1970

Registered Professional Engineer and/or Land Surveyor

John W. West

Certificate No.  
676



Drill site tract is Union Oil Company 40 acre Unit J (NW/4 of SE/4) Section 19. Humble Oil and Refining owns oil and gas leases on all remaining acreage in 3/2 of Section 19 and has agreed that in the event of gas production their leases may be communitized and pooled to form a 320 acre proration unit. In the event of gas production, communitization agreements will be drawn and state approval will be requested for the gas proration unit. Both Humble and Union agree to the above pooling for gas.

  
Clifford W. Matthews