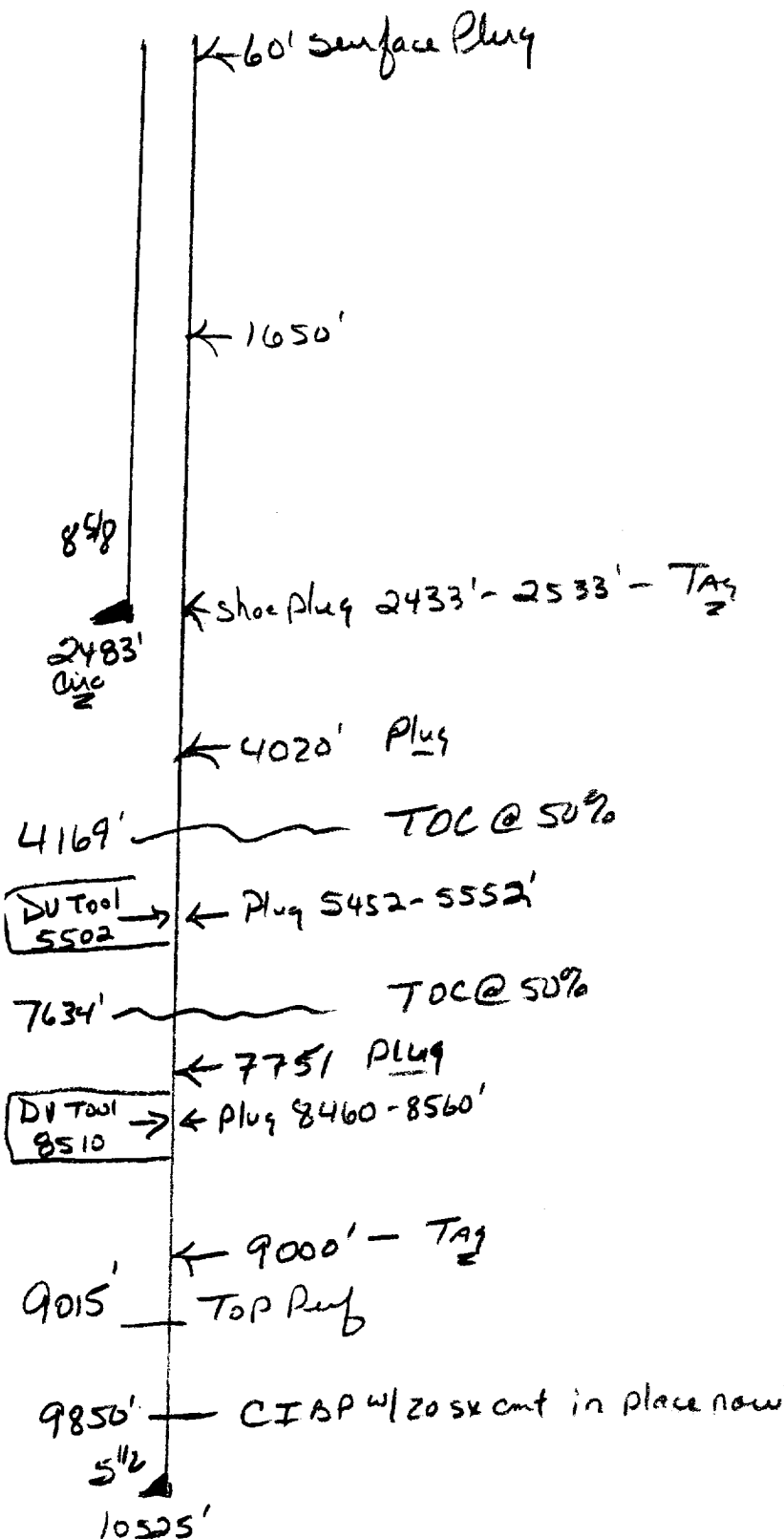


Operator J-Askin Oil - Ranch LTD
 Well Rock Tank wt. #4
 Unit D Section 1 Township 23 Range 24
 API # 30-0 15-20320

TOPS

T. Salt _____
 B. Salt _____
 Yates _____
 Glorieta _____
 Delaware 1650
 Bone Sp. 4020
 Abo _____
 Wolfcamp 7751
 Morrow 9618
 Devonian 10881
 Fusselman _____
 Other _____



- Contact OCD 24 hrs. prior to any work done.
- Salt gel mud consisting of 10# brine with 25# of gel per barrel must be placed between each plug
- Install dry hole marker as per rule 202.B.2
- Plugs are to be set from point indicated up. Plugs must not be less than 100' or 25 Sacks of cement, whichever is greater, unless specifically indicated.
- Shoe and stub plugs will be 50' above and below shoe or stub and tagged.
- Surface plug will be from 0' - 60'
- Where plugs are required cement must be placed inside and outside of all casing string(s), in the correct footage or sacks required, if no cement exists.
- Plugs to be tagged will be indicated.