

NO. OF COPIES RECEIVED 5

DISTRIBUTION

SANTA FE /

FILE / ✓

U.S.G.S. 2

LAND OFFICE /

OPERATOR /

NEW MEXICO OIL CONSERVATION COMMISSION  
**RECEIVED**

SEP 10 1970

30015-20331

Form C-101  
Revised 1-1-65

5A. Indicate Type of Lease  
STATE ☐ FEE ☒

5. State Oil & Gas Lease No.

O. C. C.

APPLICATION FOR PERMIT TO DRILL, DEEPEN, OR PLUG BACK

1a. Type of Work  
b. Type of Well DRILL ☒ DEEPEN ☐ PLUG BACK ☐  
OIL WELL ☒ GAS WELL ☐ OTHER ☐ SINGLE ZONE ☒ MULTIPLE ZONE ☐

2. Name of Operator  
**Union Oil Company of California**

3. Address of Operator  
**P. O. Box 671 Midland, Texas 79701**

4. Location of Well  
UNIT LETTER **M** LOCATED **560** FEET FROM THE **South** LINE  
AND **610** FEET FROM THE **West** LINE OF SEC. **3** TWP. **22-S** RGE. **27-E** NMPM

7. Unit Agreement Name

8. Farm or Lease Name  
**Tracy**

9. Well No.  
**3**

10. Field and Pool, or Wildcat  
**Undesignated**

12. County  
**Eddy**

19. Proposed Depth  
**3550**

19A. Formation  
**Delaware**

20. Rotary or C.T.  
**Rotary**

21. Elevations (Show whether DF, RT, etc.)  
**Unknown**

21A. Kind & Status Plug. Bond  
**Blanket**

21B. Drilling Contractor  
**Contract not let**

22. Approx. Date Work will start  
**On approval**

23. PROPOSED CASING AND CEMENT PROGRAM

SIZE OF HOLE	SIZE OF CASING	WEIGHT PER FOOT	SETTING DEPTH	SACKS OF CEMENT	EST. TOP
<b>11"</b>	<b>8-5/8"</b>	<b>24#</b>	<b>550'</b>	<b>200</b>	<b>Circ. to surface</b>
<b>7-7/8"</b>	<b>4-1/2"</b>	<b>9.5#</b>	<b>3550'</b>	<b>300</b>	<b>2650'</b>

3000 psi double manual preventers

APPROVAL VALID  
FOR 90 DAYS UNLESS  
DRILLING COMMENCED,  
EXPIRES 12-10-70

IN ABOVE SPACE DESCRIBE PROPOSED PROGRAM; IF PROPOSAL IS TO DEEPEN OR PLUG BACK, GIVE DATA ON PRESENT PRODUCTIVE ZONE AND PROPOSED NEW PRODUCTIVE ZONE. GIVE BLOWOUT PREVENTER PROGRAM, IF ANY.

I hereby certify that the information above is true and complete to the best of my knowledge and belief.

Signed J. R. Gray Title District Drilling Supt. Date September 8, 1970

(This space for State Use)

APPROVED BY W. A. Grossett TITLE OIL AND GAS INSPECTOR DATE SEP 10 1970

CONDITIONS OF APPROVAL, IF ANY:

*If the Capitan Reef is encountered contact this office prior to running the 4 1/2" casing*

Cement must be circulated to surface behind 8 3/8" casing

**MEXICO OIL CONSERVATION COMMISSION  
WELL LOCATION AND ACREAGE DEDICATION PLAT**

Form C-102  
Supersedes C-128  
Effective 1-1-65

All distances must be from the outer boundaries of the Section

Operator <b>UNION OIL CO. OF CALIFORNIA</b>			Lease <b>TRACY</b>		Well No. <b>3</b>
Unit Letter <b>M</b>	Section <b>3</b>	Township <b>22 SOUTH</b>	Range <b>27 EAST</b>	County <b>EDDY</b>	
Actual Footage Location of Well: <div style="display: flex; justify-content: space-between;"> <span><b>560</b> feet from the <b>SOUTH</b> line and</span> <span><b>610</b> feet from the <b>WEST</b> line</span> </div>					
Ground Level Elev. <b>Unknown</b>	Producing Formation <b>Delaware</b>	Pool <i>Esperanza Delaware</i> <b>Undesignated</b>		Dedicated Acreage: <b>40</b> Acres	

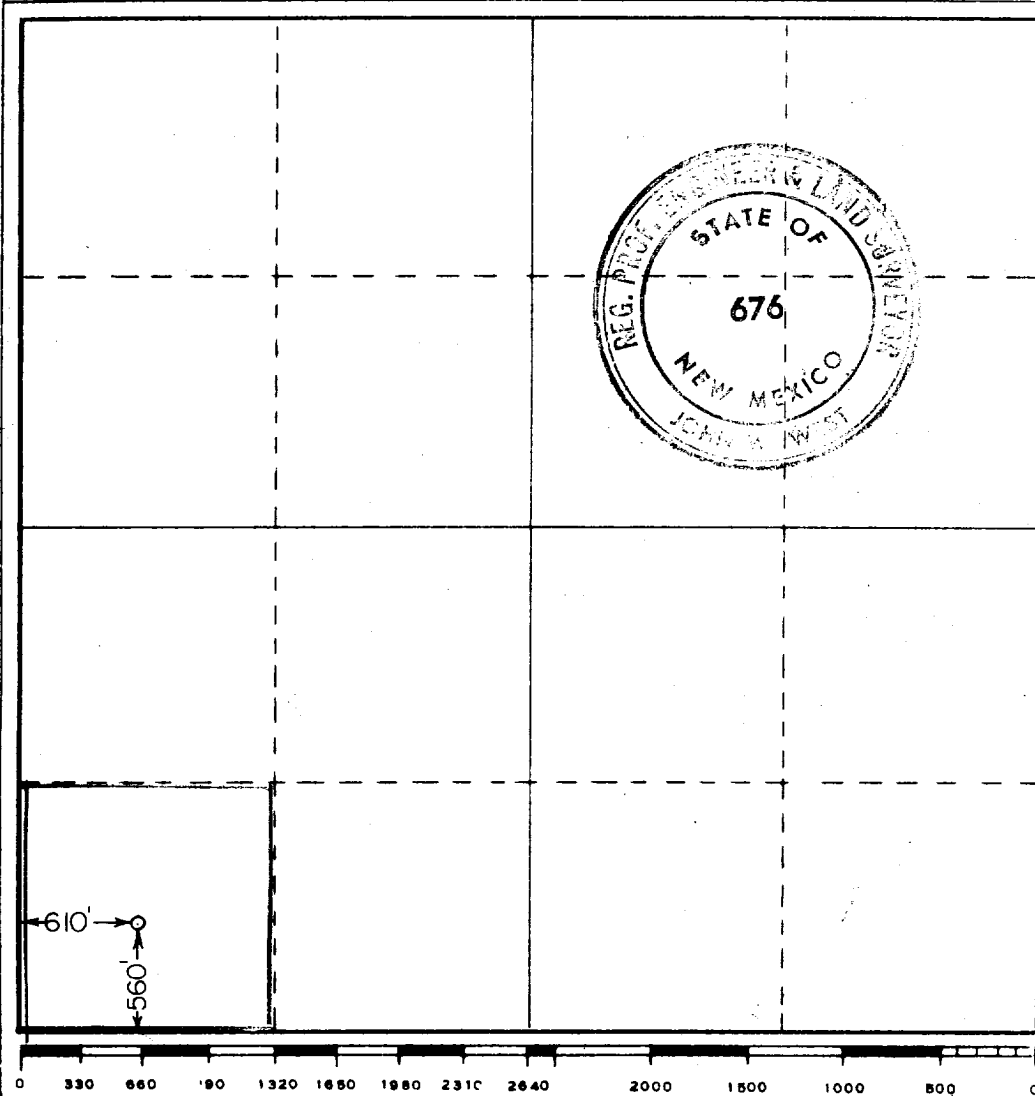
1. Outline the acreage dedicated to the subject well by colored pencil or hachure marks on the plat below.
2. If more than one lease is dedicated to the well, outline each and identify the ownership thereof (both as to working interest and royalty).
3. If more than one lease of different ownership is dedicated to the well, have the interests of all owners been consolidated by communitization, unitization, force-pooling, etc?

**RECEIVED**

☐ Yes    ☐ No    If answer is "yes," type of consolidation \_\_\_\_\_ **SEP 10 1970**

If answer is "no," list the owners and tract descriptions which have actually been consolidated. (Use reverse side of this form if necessary.) \_\_\_\_\_ **O. C. C.**

No allowable will be assigned to the well until all interests have been consolidated (by communitization, unitization, forced-pooling, or otherwise) or until a non-standard unit, eliminating such interests, has been approved by the Commission.



**CERTIFICATION**

I hereby certify that the information contained herein is true and complete to the best of my knowledge and belief.

*J. R. Gray*  
Name

**J. R. Gray**

Position

**District Drilling Supt.**

Company

**Union Oil Company of California**

Date

**September 8, 1970**

I hereby certify that the well location shown on this plat was plotted from field notes of actual surveys made by me or under my supervision, and that the same is true and correct to the best of my knowledge and belief.

Date Surveyed

**AUGUST 9, 1969**

Registered Professional Engineer and/or Land Surveyor

*John W. West*  
Certificate No.

**676**