

NEW MEXICO OIL CONSERVATION COMMISSION
WELL LOCATION AND ACREAGE DEDICATION PLAT

Form C-102
Supersedes C-128
Effective 1-1-65

All distances must be from the outer boundaries of the Section.

Operator MORRIS R. ANTWEIL		Lease JOELL		Well No. 1
Unit Letter C	Section 6	Township 23 SOUTH	Range 27 EAST	County EDDY
Actual Footage Location of Well: 660 feet from the NORTH line and 1980 feet from the WEST line				
Ground Level Elev. 3199.6	Producing Formation Strawn	Pool South Carlsbad (Strawn)	Dedicated Acreage: 317.16 320 Acres	

1. Outline the acreage dedicated to the subject well by colored pencil or hachure marks on the plat below.
2. If more than one lease is dedicated to the well, outline each and identify the ownership thereof (both as to working interest and royalty).
3. If more than one lease of different ownership is dedicated to the well, have the interests of all owners been consolidated by communitization, unitization, force-pooling, etc?

RECEIVED

SEP 25 1970

D. C. C.

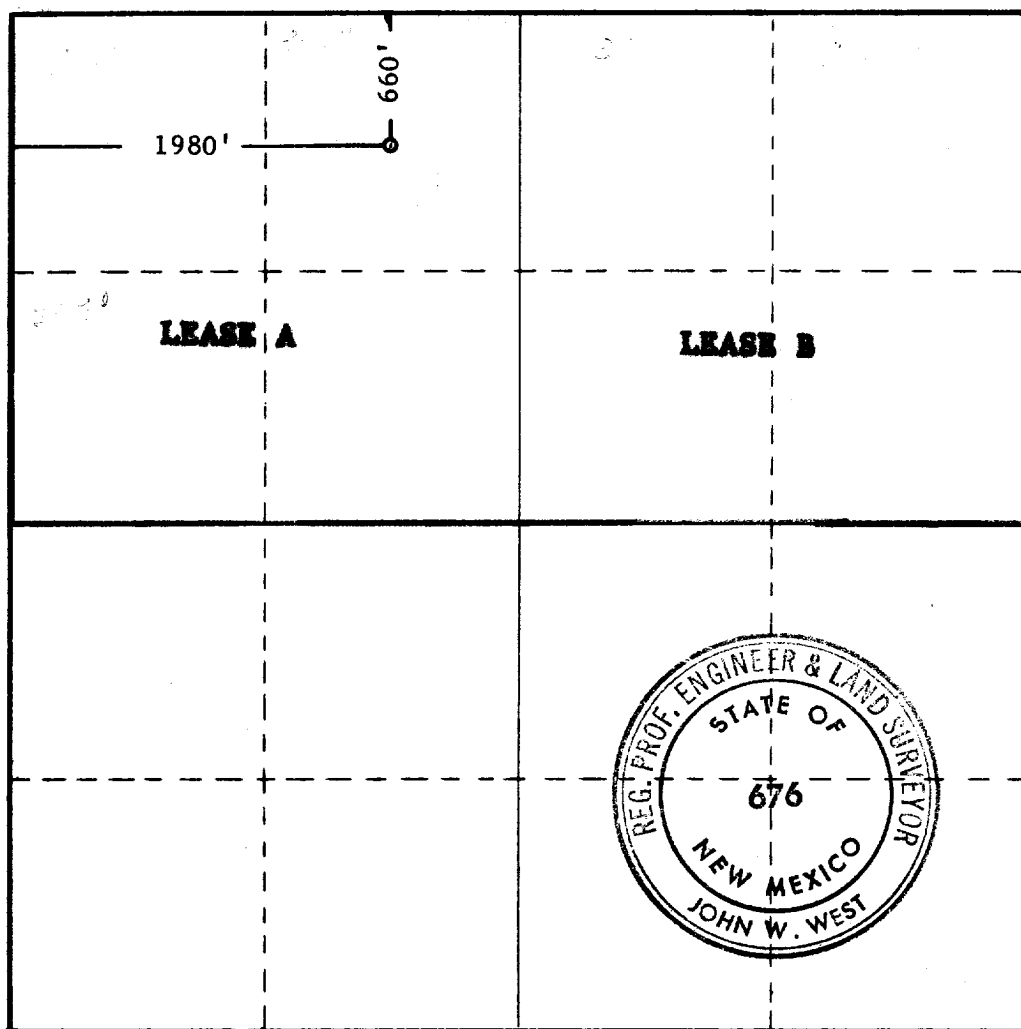
ARTESIA, OFFICE

royalty interest must be consolidated

☐ Yes ☒ No If answer is "yes," type of consolidation

If answer is "no," list **working interest ownership** and interest descriptions which have actually been consolidated. (Use reverse side of this form if necessary.)

No allowable will be assigned to the well until all interests have been consolidated (by communitization, unitization, forced-pooling, or otherwise) or until a non-standard unit, eliminating such interests, has been approved by the Commission.



CERTIFICATION

I hereby certify that the information contained herein is true and complete to the best of my knowledge and belief.

R. M. Williams

Name
R. M. Williams

Position
Agent

Company
Morris R. Antweil

Date
24 Sept. 70

I hereby certify that the well location shown on this plat was plotted from field notes of actual surveys made by me or under my supervision, and that the same is true and correct to the best of my knowledge and belief.

Date Surveyed
9-24-1970

Registered Professional Engineer and/or Land Surveyor

John W. West

Certificate No. **676**