

NEW MEXICO OIL CONSERVATION COMMISSION
WELL LOCATION AND ACREAGE DEDICATION PLAT

Form C-102
Supersedes C-128
Effective 1-1-65

All distances must be from the outer boundaries of the Section.

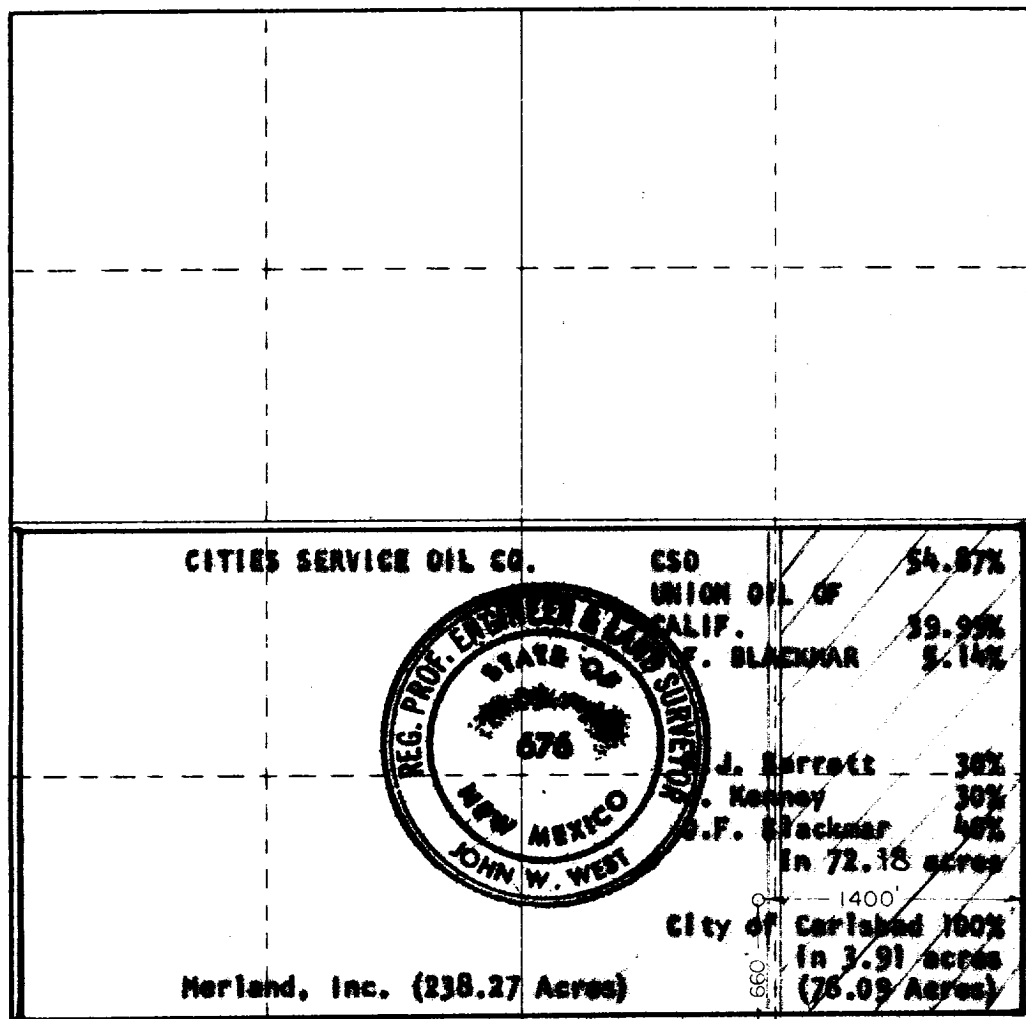
Operator CITIES SERVICE OIL COMPANY			Lease MERLAND "A" Com.		Well No. 1
Unit Letter O	Section 19	Township 22 SOUTH	Range 27 EAST	County EDDY	
Actual Footage Location of Well: 1400 feet from the EAST line and 660 feet from the SOUTH line					
Ground Level Elev. 3200 est.	Producing Formation MORROW		Pool S. CARLSBAD MORROW UNDES.	Dedicated Acreage 314.36	

1. Outline the acreage dedicated to the subject well by colored pencil or hachure marks on the plat below.
2. If more than one lease is dedicated to the well, outline each and identify the ownership thereof (both as to working interest and royalty).
3. If more than one lease of different ownership is dedicated to the well, have the interests of all owners been consolidated by communitization, unitization, force-pooling, etc?

☒ Yes ☐ No If answer is "yes," type of consolidation **Communitization**

If answer is "no," list the owners and tract descriptions which have actually been consolidated. (Use reverse side of this form if necessary.)

No allowable will be assigned to the well until all interests have been consolidated (by communitization, unitization, forced-pooling, or otherwise) or until a non-standard unit, eliminating such interests, has been approved by the Commission.



CERTIFICATION

I hereby certify that the information contained herein is true and complete to the best of my knowledge and belief.

Name *[Signature]*

Position **DISTRICT MANAGER**

For my **CITIES SERVICE OIL CO.**

Date **JUNE 11, 1971**

I hereby certify that the well location shown on this plat was plotted from field notes of actual surveys made by me or under my supervision, and that the same is true and correct to the best of my knowledge and belief.

Date Surveyed **JUNE 10, 1970**

Registered Professional Engineer and/or Land Surveyor

[Signature]
Certificate No. **676**