

UNITED STATES
DEPARTMENT OF THE INTERIOR
GEOLOGICAL SURVEY

30-015-20730

APPLICATION FOR PERMIT TO DRILL, DEEPEN, OR PLUG BACK

1a. TYPE OF WORK

DRILL ☒DEEPEN ☐PLUG BACK ☐

b. TYPE OF WELL

OIL
WELL ☐GAS
WELL ☒

OTHER

SINGLE
ZONE ☒MULTIPLE
ZONE ☐

2. NAME OF OPERATOR

Jake L. Hamon

3. ADDRESS OF OPERATOR

908 Vaughn Building, Midland, Texas 79701

4. LOCATION OF WELL (Report location clearly and in accordance with any State requirements.)*

At surface

1650' FNL & 2310' FWL of Section 23, T-23-S, R-24-E, NMPM

At proposed prod. zone

14. DISTANCE IN MILES AND DIRECTION FROM NEAREST TOWN OR POST OFFICE*

AUG 21 1972

15 miles southwest of Carlsbad, New Mexico

15. DISTANCE FROM PROPOSED*

LOCATION TO NEAREST
PROPERTY OR LEASE LINE, FT.
(Also to nearest drlg. line, if any)

1650'

16. NO. OF ACRES IN LEASE

760 ACRES, OFFICE

17. NO. OF ACRES ASSIGNED
TO THIS WELL

640

18. DISTANCE FROM PROPOSED LOCATION*

TO NEAREST WELL, DRILLING, COMPLETED,
OR APPLIED FOR, ON THIS LEASE, FT.

None

19. PROPOSED DEPTH

10,500'

20. ROTARY OR CABLE TOOLS

Potary

21. ELEVATIONS (Show whether DF, RT, GR, etc.)

3574' & 61'

22. APPROX. DATE WORK WILL START*

August 22, 1972

23.

PROPOSED CASING AND CEMENTING PROGRAM

SIZE OF HOLE	SIZE OF CASING	WEIGHT PER FOOT	SETTING DEPTH	QUANTITY OF CEMENT
17-1/2"	13-3/8"	48#	30'	2 cubic yards
12-1/4"	8-5/8"	24#	2500'	1500 Sacks & (circulable)
7-7/8"	4-1/2"	10.5# & 11.6#	10,400'	250 sacks

Operator proposes to drill to the lower Morrow formation anticipated at or above 10,400'. Any significant shows of oil or gas will be drill stem tested. If oil or gas production is indicated in any zone penetrated, 4-1/2" casing will be set and cemented and the productive zone perforated. If necessary, the productive zone will be acidized or hydraulically fractured.

Fresh water gel mud will be used on the surface hole to 2500'. Fresh water will be used as drilling fluid from 2500' to 8200'. Low solids fresh water mud will be used from 8200' to total depth.

Two hydraulic blowout preventors of at least 3000 psi working pressure will be set on the surface casing and used throughout the drilling program. BOP's to be tested when installed and operated daily.

IN ABOVE SPACE DESCRIBE PROPOSED PROGRAM: If proposal is to deepen or plug back, give data on present productive zone and proposed new productive zone. If proposal is to drill or deepen directionally, give pertinent data on subsurface locations and measured and true vertical depths. Give blowout preventer program, if any.

24.

SIGNED

TITLE Production Superintendent DATE August 11, 1972

(This space for Federal or State office use)

PERMIT NO.

APPROVAL DATE

DECLARED WATER BASIN

APPROVED BY
CONDITIONS OF APPROVAL, IF ANY:CEMENT BEHIND THE
DATE 8/18
CASING MUST BE CIRCULATED

THIS APPROVAL IS RESCINDED IF OPERATION
ARE NOT COMMENCED WITHIN 3 MONTHS.
NOV 17 1972
*See Instructions On Reverse Side

NOTIFY USGS IN SUFFICIENT TIME TO
LESS CEMENTING THE 8/18 CASING.

NEW MEXICO OIL CONSERVATION COMMISSION
WELL LOCATION AND ACREAGE DEDICATION PLAT

Form C-102
Supersedes C-128
Effective 1-1-65

All distances must be from the outer boundaries of the Section.

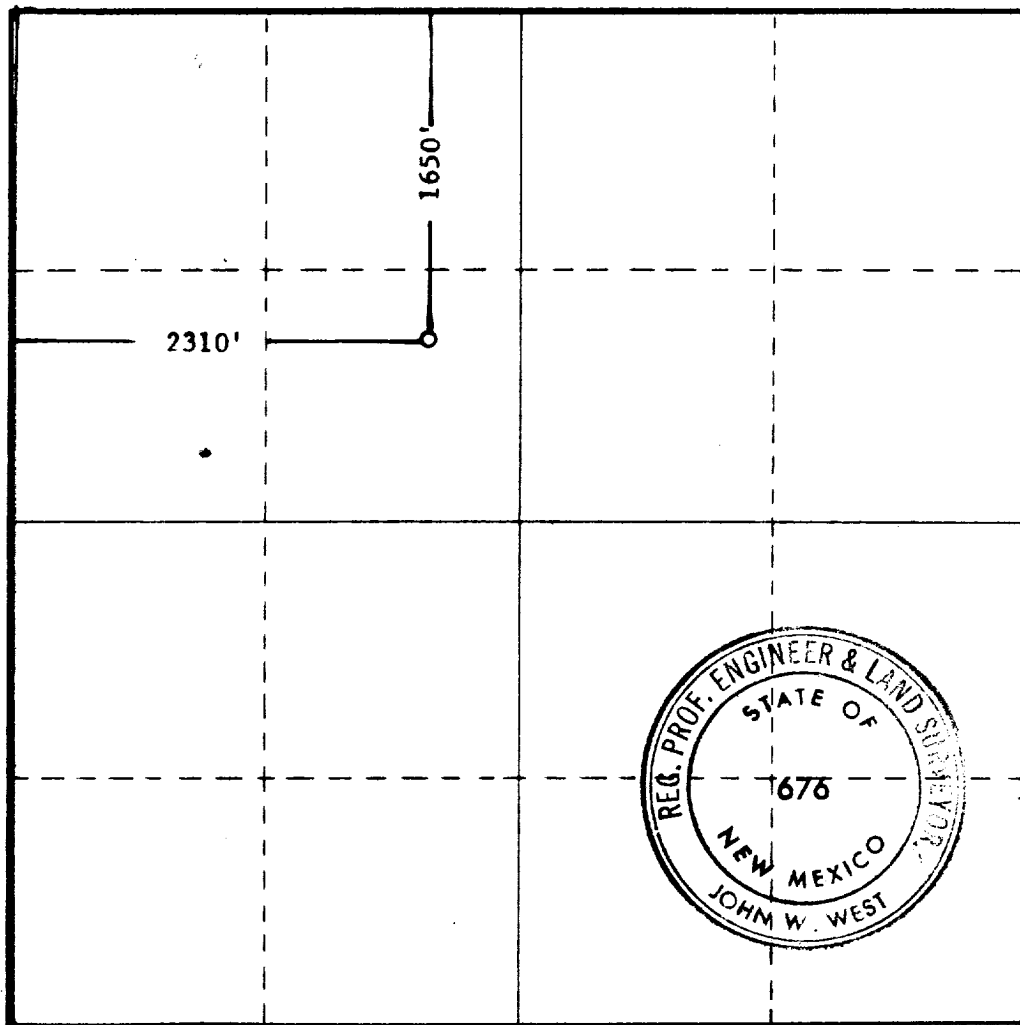
Operator JAKE L. HAMON		Lease UNION FEDERAL		Well No. 1	
Unit Letter F	Section 23	Township 23 SOUTH	Range 24 EAST	County EDDY	
Actual Footage Location of Well: 1650 feet from the NORTH line and 2310 feet from the WEST line					
Ground Level Elev. 3894.8	Producing Formation LOWER MORROW	Pool ROCK TANK	Dedicated Acreage: 640		Acres

1. Outline the acreage dedicated to the subject well by colored pencil or hatchure marks on the plat below.
2. If more than one lease is dedicated to the well, outline each and identify the ownership thereof (both as to working interest and royalty).
3. If more than one lease of different ownership is dedicated to the well, have the interests of all owners been consolidated by communitization, unitization, force-pooling, etc?

☐ Yes ☐ No If answer is "yes," type of consolidation _____

If answer is "no," list the owners and tract descriptions which have actually been consolidated. (Use reverse side of this form if necessary.) _____

No allowable will be assigned to the well until all interests have been consolidated (by communitization, unitization, forced-pooling, or otherwise) or until a non-standard unit, eliminating such interests, has been approved by the Commission.



CERTIFICATION

I hereby certify that the information contained herein is true and complete to the best of my knowledge and belief.

By Cecil H. Baston
Position
PETROLEUM ENGINEER

Company
JAKE L. HAMON

Date
8-14-1972

I hereby certify that the well location shown on this plat was plotted from field notes of actual survey made by me or under my supervision, and that the same is true and correct to the best of my knowledge and belief.

Date Surveyed
8-11-1972

Registered Professional Engineer and/or Land Surveyor

John W. West
Certificate No. **676**



JAKE L. HAMON
OIL PRODUCER
908 VAUGHN BUILDING
MIDLAND, TEXAS

August 11, 1972

United States Department of the Interior
Geological Survey
P.O. Drawer U
Artesia, New Mexico 88210

RE: Jake L. Hamon
No. 1 Union Federal Lease 0295264
Section 23, T-23-S, R-24-E NMPM
Eddy County, New Mexico

Gentlemen:

Attached are five copies of the Form 9-331-C with surveyer's plats of the above well location. Also attached are two copies each of plats as follows:

- (1) Well location and existing area roads.
- (2) Planned access road.
- (3) Location and type of water supply.
- (4) Proposed tank battery and flow line location.
- (5) Location layout.

There will be no airstrip or camp at this well location.

Waste material which will include bore hole cuttings and drilling mud will be placed in the open reserve pit. This material will be allowed to dry by evaporation and will then be covered with the original surface soil.

When the pits are all dry and covered, the location will be leveled to conform to the general contour of the surrounding land.

We hope that this information satisfies all of your requirements. Should there be any additional information which you desire, please do not hesitate to call on us.

Very truly yours,

Jake L. Hamon

By: 

H.W. Shaw

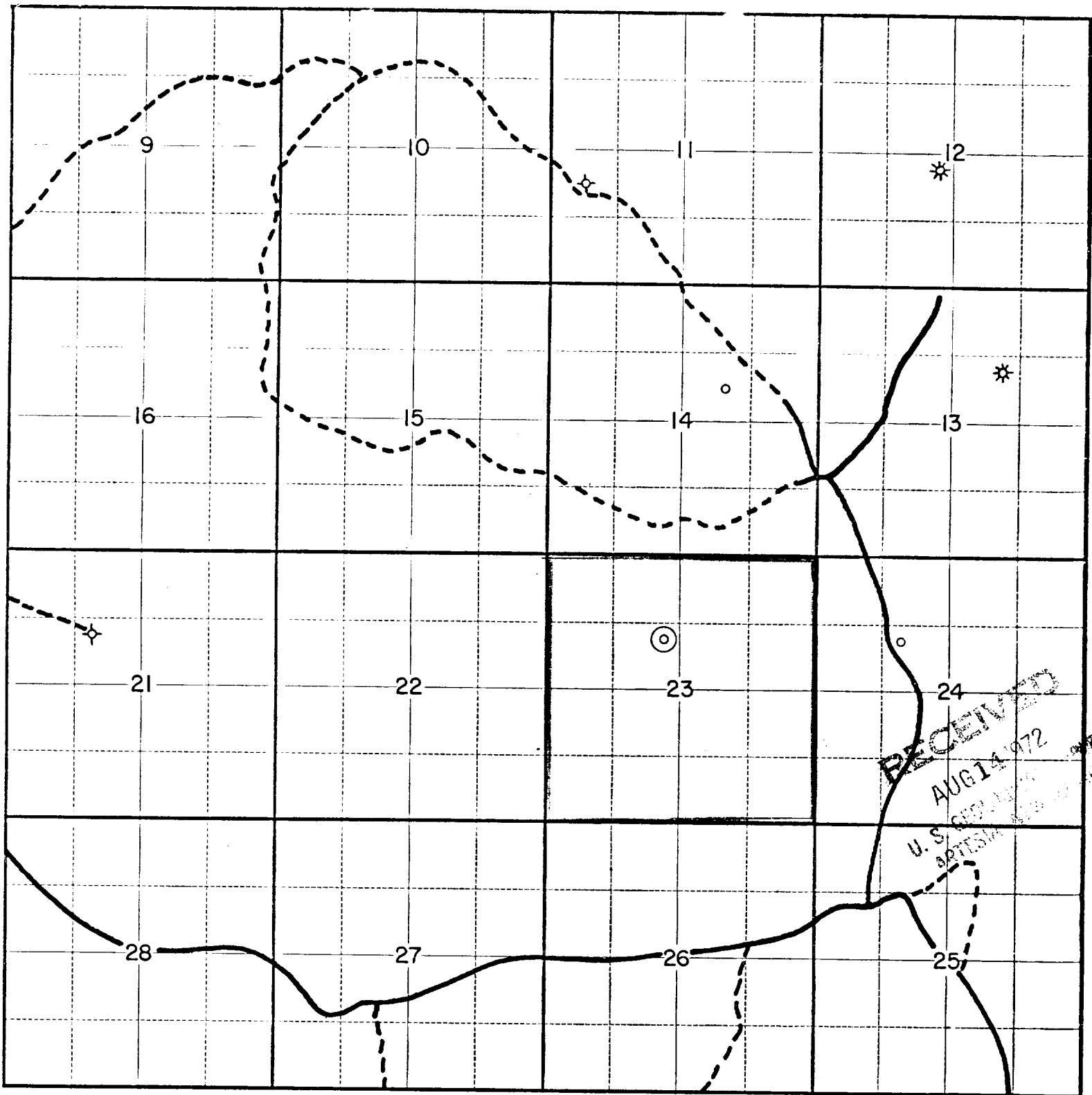
Production Superintendent

HWS/jwp

encls

cc: Chester Phillips

RECEIVED
AUG 14 1972
U. S. GEOLOGICAL SURVEY
ARTESIA, NEW MEXICO

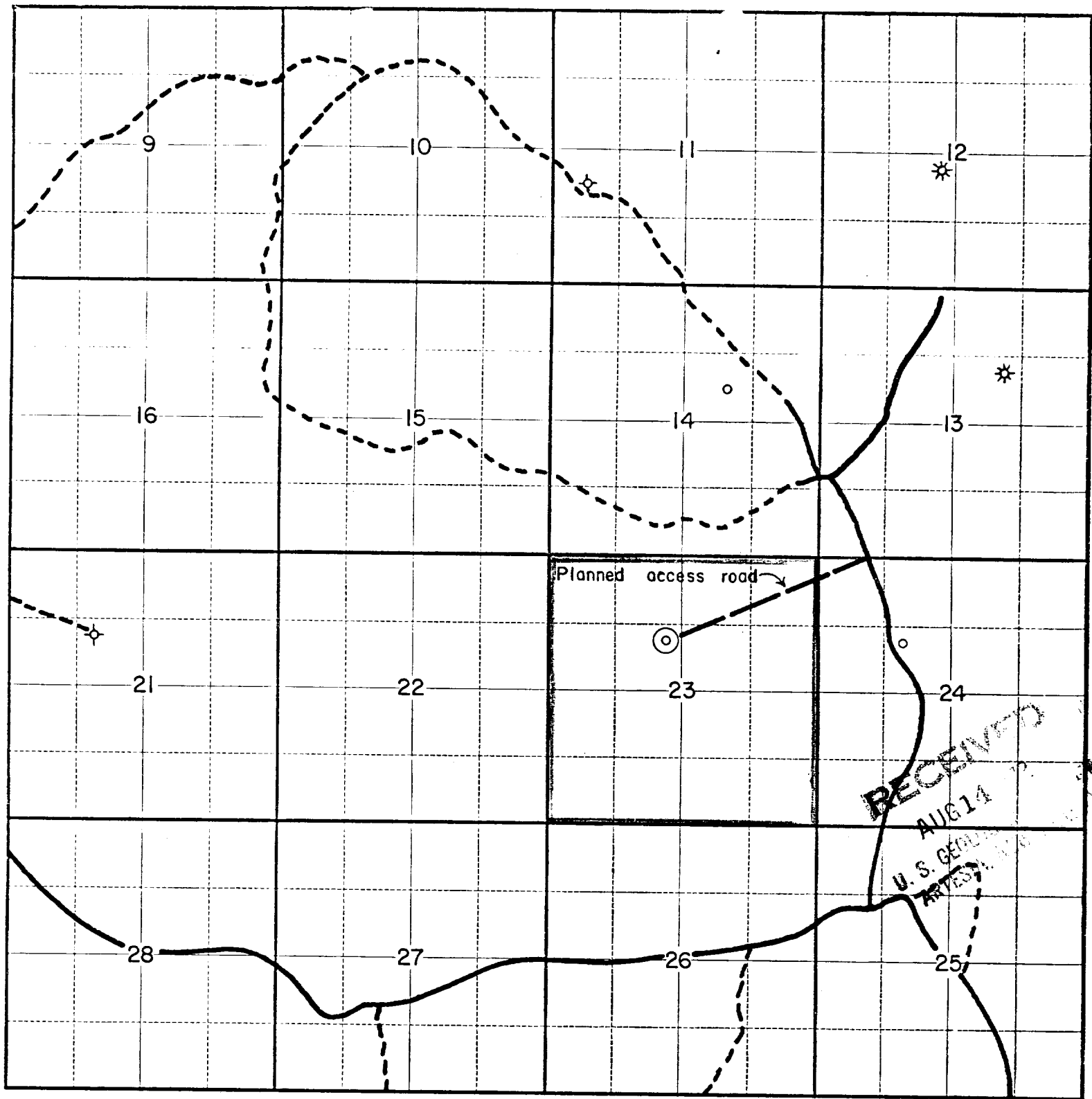


Well Location and
Existing Area Roads

Jake L. Hamon
Union Federal No. 1
NE SE NW Section 23
T-23-S R-24-E
Eddy County, New Mexico

Scale 2" = 1 Mile

———— Graded Dirt Road
- - - - - Ranch Trail

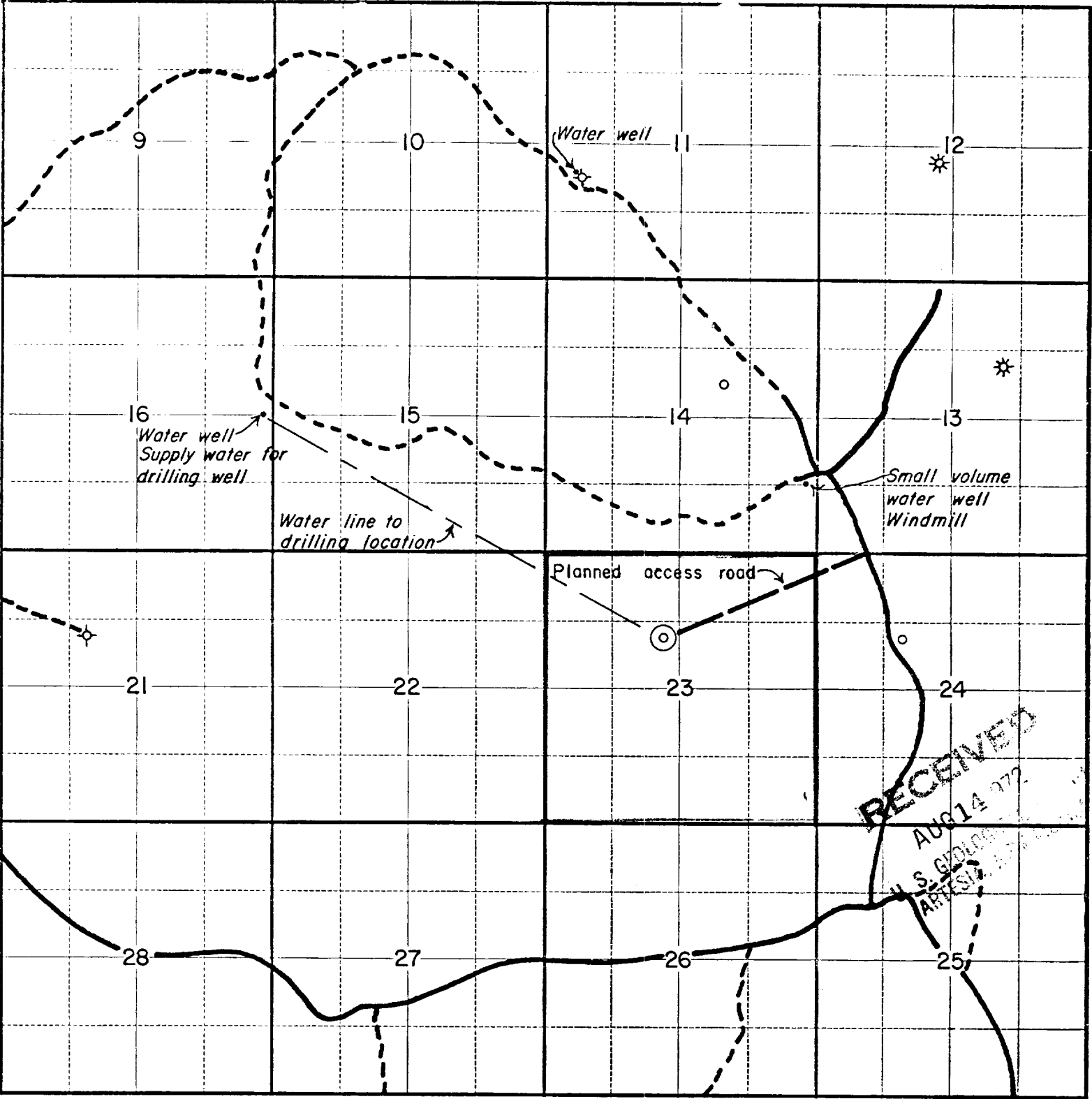


Proposed Access Road

Jake L. Hamon
Union Federal No. 1
NE SE NW Section 23
T-23-S, R-24-E
Eddy County, New Mexico

Scale 2" = 1 Mile

———— Graded Dirt Road
- - - - Ranch Trail

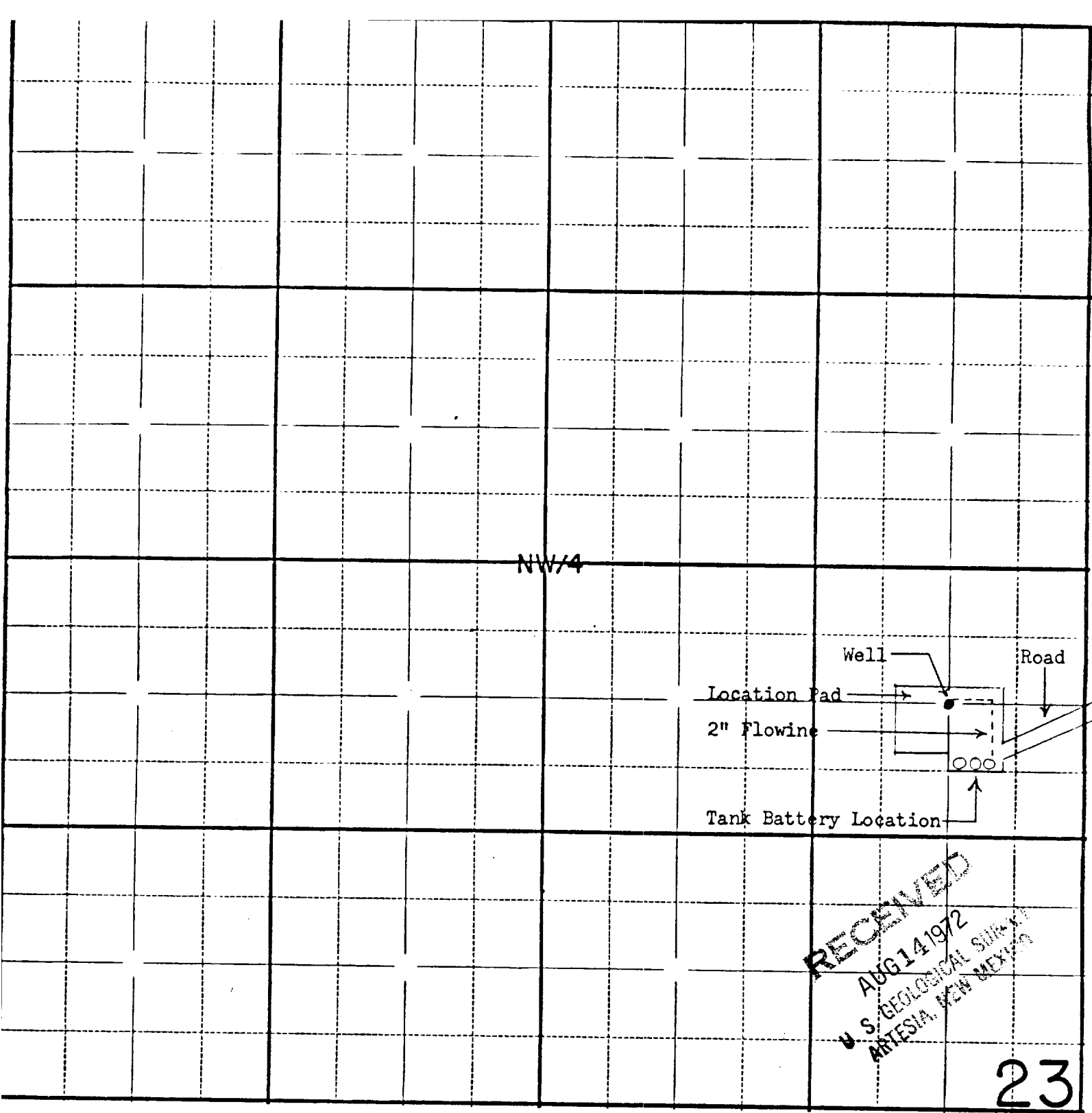


Location and Types
of Water Supply

Jake L. Hamon
Union Federal No. 1
NE SE NW Section 23
T-23-S R-24-E
Eddy County, New Mexico

Scale 2" = 1 Mile

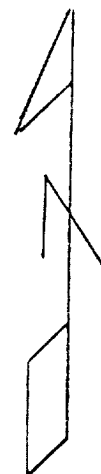
———— Graded Dirt Road
- - - - - Ranch Trail



PROPOSED TANK BATTERY LOCATION

Jake L. Hamon
Union Federal No. 1
NE SE NW Section 23
T-23-S R-24-E
Eddy County, New Mexico

Scale 1" = 330'



RECEIVED
AUG 14 1972
U.S. GEOLOGICAL SURVEY
ARIZONA, NEW MEXICO

23

LOCATION LAYOUT

Jake L. Hamon
 Union Federal No. 1
 NE SE NW Section 23
 T-23-S R-24-E
 Eddy County, New Mexico

Scale 1" = 50'

RECEIVED
 AUG 4 1972
 U.S. GEOLOGICAL SURVEY
 ARTESIAN WATER DIVISION

