

NEW MEXICO OIL CONSERVATION COMMISSION
WELL LOCATION AND ACREAGE DEDICATION PLAT

Form C-102
Supersedes C-128
Effective 1-1-65

All distances must be from the outer boundaries of the Section

AMENDED PLAT

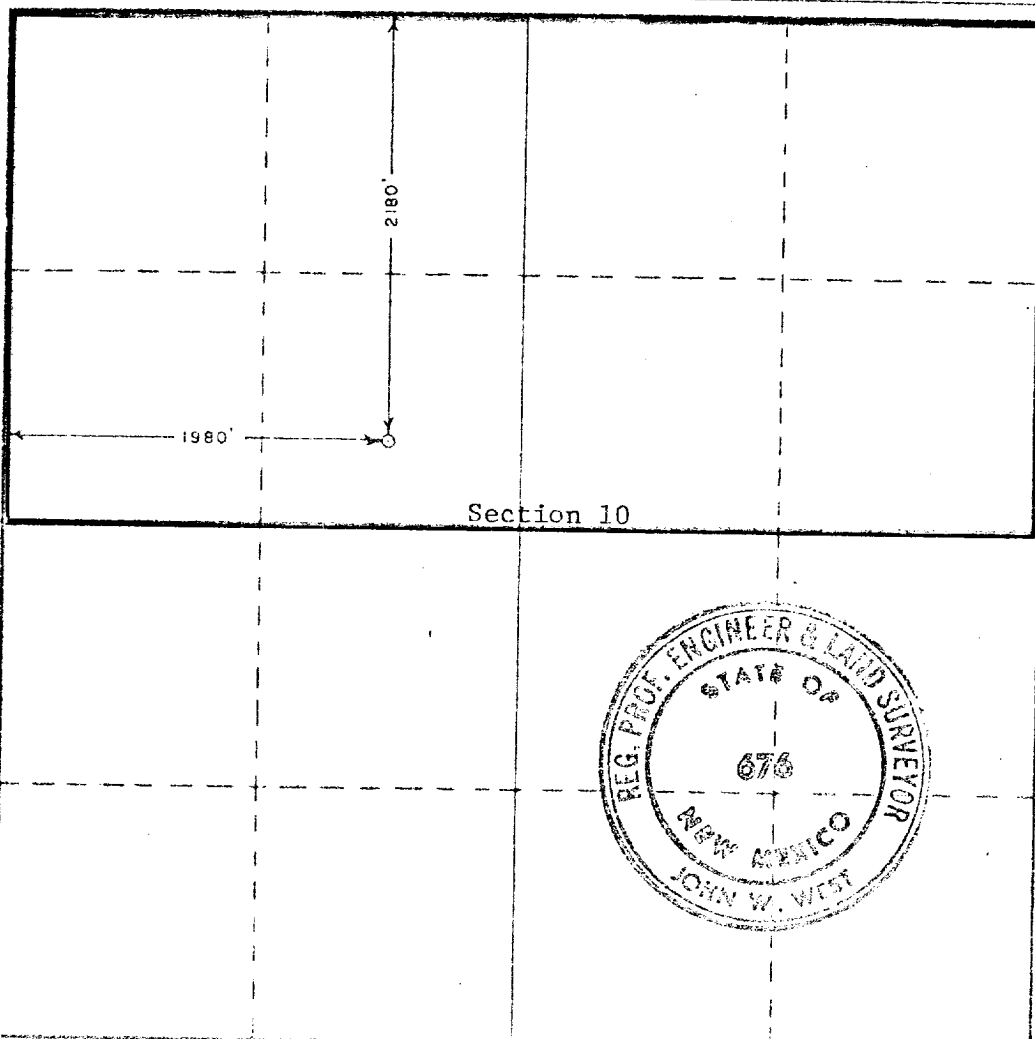
Operator Skelly Oil Company		Lease Cedar Canyon 10		Well No. 1	
Tract Letter E F	Section 10	Township 24 S	Range 29 E	County Eddy	
Actual Footage Location of Well:					
2180 feet from the North line and		1980 feet from the West line			
Ground Level Elev. Unknown	Producing Formation Morrow	Pool Undesignated	Dedicated Acreage: 320 Acres		

1. Outline the acreage dedicated to the subject well by colored pencil or hachure marks on the plat below.
2. If more than one lease is dedicated to the well, outline each and identify the ownership thereof (both as to working interest and royalty).
3. If more than one lease of different ownership is dedicated to the well, have the interests of all owners been consolidated by communitization, unitization, force-pooling, etc?

☐ Yes ☐ No If answer is "yes," type of consolidation _____

If answer is "no," list the owners and tract descriptions which have actually been consolidated. (Use reverse side of this form if necessary.) _____

No allowable will be assigned to the well until all interests have been consolidated (by communitization, unitization, forced-pooling, or otherwise) or until a non-standard unit, eliminating such interests, has been approved by the Commission.



CERTIFICATION

I hereby certify that the information contained herein is true and complete to the best of my knowledge and belief.

Name
C. J. Love C. J. Love

Position
District Production Manager

Company
Skelly Oil Company

Date
October 10, 1972

I hereby certify that the well location shown on this plat was plotted from field notes of actual survey made by me or under my supervision, and that the same is true and correct to the best of my knowledge and belief.

Sept. 20, 1972

Date Surveyed

Plat prepared by _____
and _____

John W. West
676

RECEIVED
OCT 16 1972
ARTSIA OFFICE