

NO. OF COPIES RECEIVED	1
DISTRIBUTION	
SANTA FE	
FILE	1
U.S.G.S.	1
LAND OFFICE	1
OPERATOR	1

**RECEIVED**

NOV 2 1972

**O. C. C.**  
ARTESIA, OFFICE

30-015-20765

Form C-101  
Revised 1-1-65

5A. Indicate Type of Lease	STATE <input checked="" type="checkbox"/> FEE <input type="checkbox"/>
5. State Oil & Gas Lease No.	K-3979 LG-0278

APPLICATION FOR PERMIT TO DRILL, DEEPEN, OR PLUG BACK

1a. Type of Work		7. Unit Agreement Name	
b. Type of Well DRILL <input checked="" type="checkbox"/> DEEPEN <input type="checkbox"/> PLUG BACK <input type="checkbox"/> OIL WELL <input type="checkbox"/> GAS WELL <input checked="" type="checkbox"/> OTHER <input type="checkbox"/> SINGLE ZONE <input checked="" type="checkbox"/> MULTIPLE ZONE <input type="checkbox"/>		8. Farm or Lease Name GOODWIN STATE	
2. Name of Operator INEXCO OIL COMPANY		9. Well No. 1	
3. Address of Operator 106 Mid-America Building, Midland, Texas 79701		10. Field and Pool, or Wildcat Wildcat	
4. Location of Well UNIT LETTER J LOCATED 2015 FEET FROM THE SOUTH LINE AND 1685 FEET FROM THE EAST LINE OF SEC. 4 TWP. 24S RGE. 23E NMPM		12. County EDDY	
19. Proposed Depth 10,250		19A. Formation MORROW	20. Rotary or C.T. ROTARY
21. Elevations (Show whether DE, RT, etc.) 4399.2 GL	21A. Kind & Status Plug. Bond Blanket on File	21B. Drilling Contractor MORAN OIL PROD & DRLG.	22. Approx. Date Work will start 11-3-72

23.

PROPOSED CASING AND CEMENT PROGRAM

SIZE OF HOLE	SIZE OF CASING	WEIGHT PER FOOT	SETTING DEPTH	SACKS OF CEMENT	EST. TOP
17-1/2"	13-3/8"	48.0#	300±'	300±	Circ
12-1/4"	8-5/8"	24.0 & 28.0#	2800±'	1,200±	Circ
7-7/8"	5-1/2"	17.0#	10,250±'	400±	7,500'

PROPOSE TO DRILL FROM SURFACE TO TOTAL DEPTH WITH ROTARY TOOLS, SET 300' 13-3/8" CONDUCTOR PIPE, 2800' 8-5/8" SURFACE CASING, AND CIRCULATE CEMENT ON BOTH STRINGS. PROPER BLOWOUT EQUIPMENT INCLUDING HYDRIL WILL BE USED. NEW CASING WILL BE USED.

APPROVAL VALID  
FOR 90 DAYS UNLESS  
DRILLING COMMENCED,  
EXPIRES 2-2-73

IN ABOVE SPACE DESCRIBE PROPOSED PROGRAM: IF PROPOSAL IS TO DEEPEN OR PLUG BACK, GIVE DATA ON PRESENT PRODUCTIVE ZONE AND PROPOSED NEW PRODUCTIVE ZONE. GIVE BLOWOUT PREVENTER PROGRAM, IF ANY.

I hereby certify that the information above is true and complete to the best of my knowledge and belief.

Signed John R. Barrios Title DRILLING ENGINEER Date 10-27-72  
JOHN R. BARRIOS  
(This space for State Use)

APPROVED BY W. A. Gressett TITLE OIL AND GAS INSPECTOR DATE NOV 2 1972

CONDITIONS OF APPROVAL, IF ANY:

Cement must be circulated to  
surface behind 13 3/8" + 8 5/8" casing

Notify N.M.O.C.C. in sufficient  
time to witness cementing  
the 8 5/8" casing

MEXICO OIL CONSERVATION COMMISSION  
WELL LOCATION AND ACREAGE DEDICATION PLAT

RECEIVED

Form C-102  
Supersedes C-128  
Effective 1-1-65

NOV 2 1972

All distances must be from the outer boundaries of the Section.

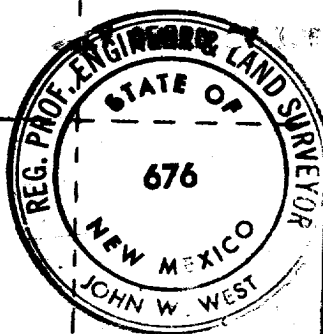
Operator <b>INEXCO OIL COMPANY</b>			Lease <b>GOODWIN-STATE</b>			Well No. <b>O. C. C. 1</b>		
Unit Letter <b>J</b>	Section <b>4</b>	Township <b>24 SOUTH</b>	Range <b>23 EAST</b>	County <b>EDDY</b>				
Actual Footage Location of Well: <b>2015</b> feet from the <b>SOUTH</b> line and <b>1685</b> feet from the <b>EAST</b> line								
Ground Level Elev. <b>4402</b>	Producing Formation <i>menow</i>		Pool <b>WILDCAT</b>			Dedicated Acreage: <b>320</b> Acres		

1. Outline the acreage dedicated to the subject well by colored pencil or hachure marks on the plat below.
2. If more than one lease is dedicated to the well, outline each and identify the ownership thereof (both as to working interest and royalty).
3. If more than one lease of different ownership is dedicated to the well, have the interests of all owners been consolidated by communitization, unitization, force-pooling, etc?

☐ Yes ☒ No If answer is "yes," type of consolidation \_\_\_\_\_

If answer is "no," list the owners and tract descriptions which have actually been consolidated. (Use reverse side of this form if necessary.) \_\_\_\_\_

No allowable will be assigned to the well until all interests have been consolidated (by communitization, unitization, forced-pooling, or otherwise) or until a non-standard unit, eliminating such interests, has been approved by the Commission.



INEXCO 100% W. I.  
87.5% R. I.  
IN ALL LEASES

K-3980

K-3979

K-3979

1685'  
2015'

*Foster*

CERTIFICATION

I hereby certify that the information contained herein is true and complete to the best of my knowledge and belief.

*B. J. Mahony*  
Name  
B. J. MAHONY  
Position  
MANAGER, DRILLING & PRODUCTION  
Company  
INEXCO OIL COMPANY  
Date  
November 6, 1972

I hereby certify that the well location shown on this plat is from field notes of actual surveys made under my supervision, and that the same is true and correct to the best of my knowledge and belief.

Date Surveyed  
OCTOBER 20, 1972  
Registered Professional Engineer and/or Land Surveyor

*John W. West*  
Certificate No. 676



**RECEIVED**

**NOV 8 1972**

**O.C.C.  
ARTESIA, OFFICE**

RECEIVED

NEW MEXICO OIL CONSERVATION COMMISSION  
WELL LOCATION AND ACREAGE DEDICATION PLAT

NOV 2 1972 Form C-102  
Supersedes C-128  
Effective 1-4-65

All distances must be from the outer boundaries of the Section.

Operator <b>INEXCO OIL COMPANY</b>		Lease <b>GOODWIN-STATE</b>		ARTESIA, OFFICE	
Unit Letter <b>J</b>	Section <b>4</b>	Township <b>24 SOUTH</b>	Range <b>23 EAST</b>	County <b>EDDY</b>	
Actual Footage Location of Well: <b>2015</b> feet from the <b>SOUTH</b> line and <b>1685</b> feet from the <b>EAST</b> line					
Ground Level Elev. <b>4402</b>	Producing Formation <b>WILDCAT</b>		Dedicated Acreage: <b>320</b> Acres		

1. Outline the acreage dedicated to the subject well by colored pencil or hachure marks on the plat below.
2. If more than one lease is dedicated to the well, outline each and identify the ownership thereof (both as to working interest and royalty).
3. If more than one lease of different ownership is dedicated to the well, have the interests of all owners been consolidated by communitization, unitization, force-pooling, etc?

☐ Yes ☐ No If answer is "yes," type of consolidation \_\_\_\_\_

If answer is "no," list the owners and tract descriptions which have actually been consolidated. (Use reverse side of this form if necessary.) \_\_\_\_\_

No allowable will be assigned to the well until all interests have been consolidated (by communitization, unitization, forced-pooling, or otherwise) or until a non-standard unit, eliminating such interests, has been approved by the Commission.

THIS WELL TO BE DRILLED AS A 100% INEXCO OPERATION ON  
ACREAGE WHOLLY OWNED BY INEXCO OIL COMPANY.



1685'

2015'

CERTIFICATION

I hereby certify that the information contained herein is true and complete to the best of my knowledge and belief.

Name

**B. J. MAHONY**

Position

**MANAGER, DRILLING & PRODUCTION**

Company

**INEXCO OIL COMPANY**

Date

**November 6, 1972**

I hereby certify that the well location shown on this plat was plotted from field notes of actual surveys made by me or under my supervision, and that the same is true and correct to the best of my knowledge and belief.

Date Surveyed

**OCTOBER 20, 1972**

Registered Professional Engineer and/or Land Surveyor

**John W. West**

Certificate No.

**676**

330 892 190 1320 1680 1980 2310 2640 2000 1500 1000 500 0

NEW MEXICO OIL CONSERVATION COMMISSION  
WELL LOCATION AND ACREAGE DEDICATION PLAT

NOV 2 1972 Form C-102  
Supersedes C-128  
Effective 1-1-65

All distances must be from the outer boundaries of the Section.

O. C. C.

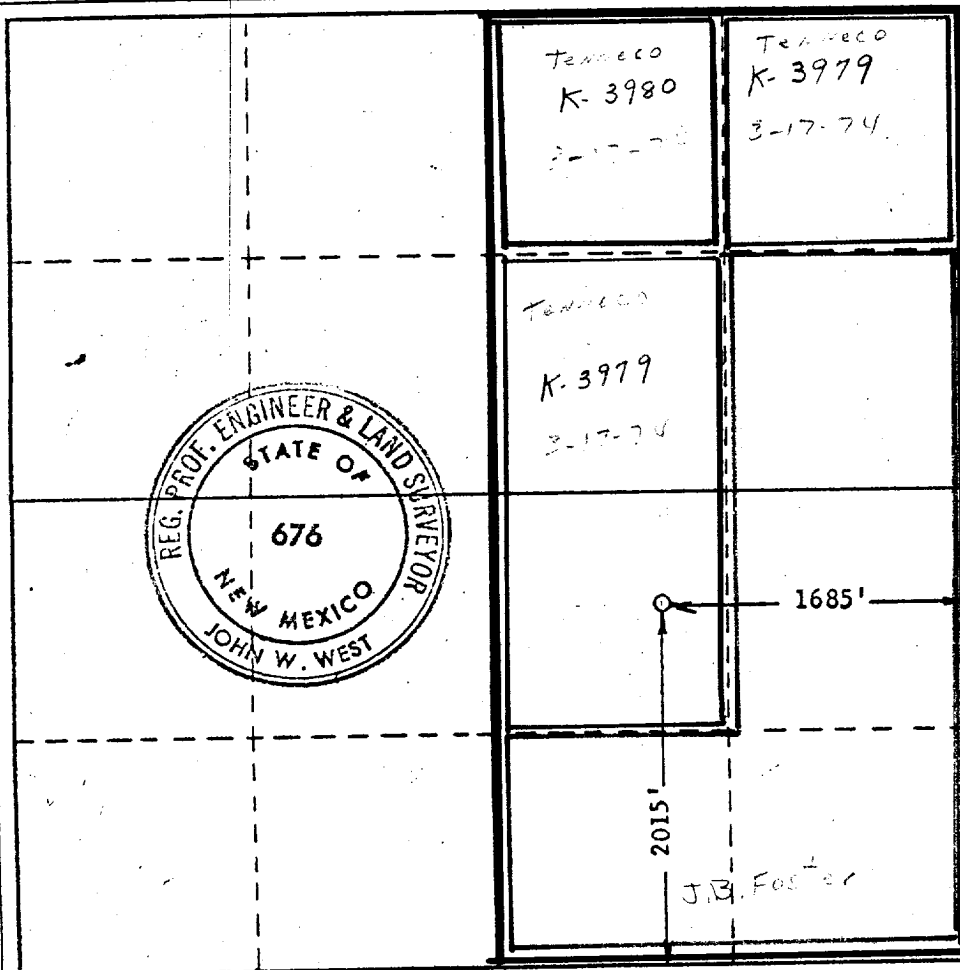
Operator <b>INEXCO OIL COMPANY</b>			Lease <b>GOODWIN=STATE</b>			ARTESIA, OFFICE <b>1</b>		
Unit Letter <b>J</b>	Section <b>4</b>	Township <b>24 SOUTH</b>	Range <b>23 EAST</b>	County <b>EDDY</b>				
Actual Footage Location of Well: <b>2015</b> feet from the <b>SOUTH</b> line and <b>1685</b> feet from the <b>EAST</b> line								
Ground Level Elev. <b>4402</b>	Producing Formation <b>Morrow</b>		Pool <b>Wildcat</b>			Dedicated Acreage: <b>320</b> Acres		

1. Outline the acreage dedicated to the subject well by colored pencil or hachure marks on the plat below.
2. If more than one lease is dedicated to the well, outline each and identify the ownership thereof (both as to working interest and royalty).
3. If more than one lease of different ownership is dedicated to the well, have the interests of all owners been consolidated by communitization, unitization, force-pooling, etc?

☐ Yes ☐ No If answer is "yes," type of consolidation \_\_\_\_\_

If answer is "no," list the owners and tract descriptions which have actually been consolidated. (Use reverse side of this form if necessary.) \_\_\_\_\_

No allowable will be assigned to the well until all interests have been consolidated (by communitization, unitization, forced-pooling, or otherwise) or until a non-standard unit, eliminating such interests, has been approved by the Commission.



CERTIFICATION

I hereby certify that the information contained herein is true and complete to the best of my knowledge and belief.

Name
Position
Company <b>INEXCO OIL CO</b>
Date

I hereby certify that the well location shown on this plat was plotted from field notes of actual surveys made by me or under my supervision, and that the same is true and correct to the best of my knowledge and belief.

Date Surveyed <b>OCTOBER 20, 1972</b>
Registered Professional Engineer and/or Land Surveyor <b>John W. West</b>
Certificate No. <b>676</b>

