

MEXICO OIL CONSERVATION COMMISSION WELL LOCATION AND ACREAGE DEDICATION PLAT

Form O-10-2
Supersedes O-10-1
Effective 1-1-65

All distances must be from the outer boundaries of the Section

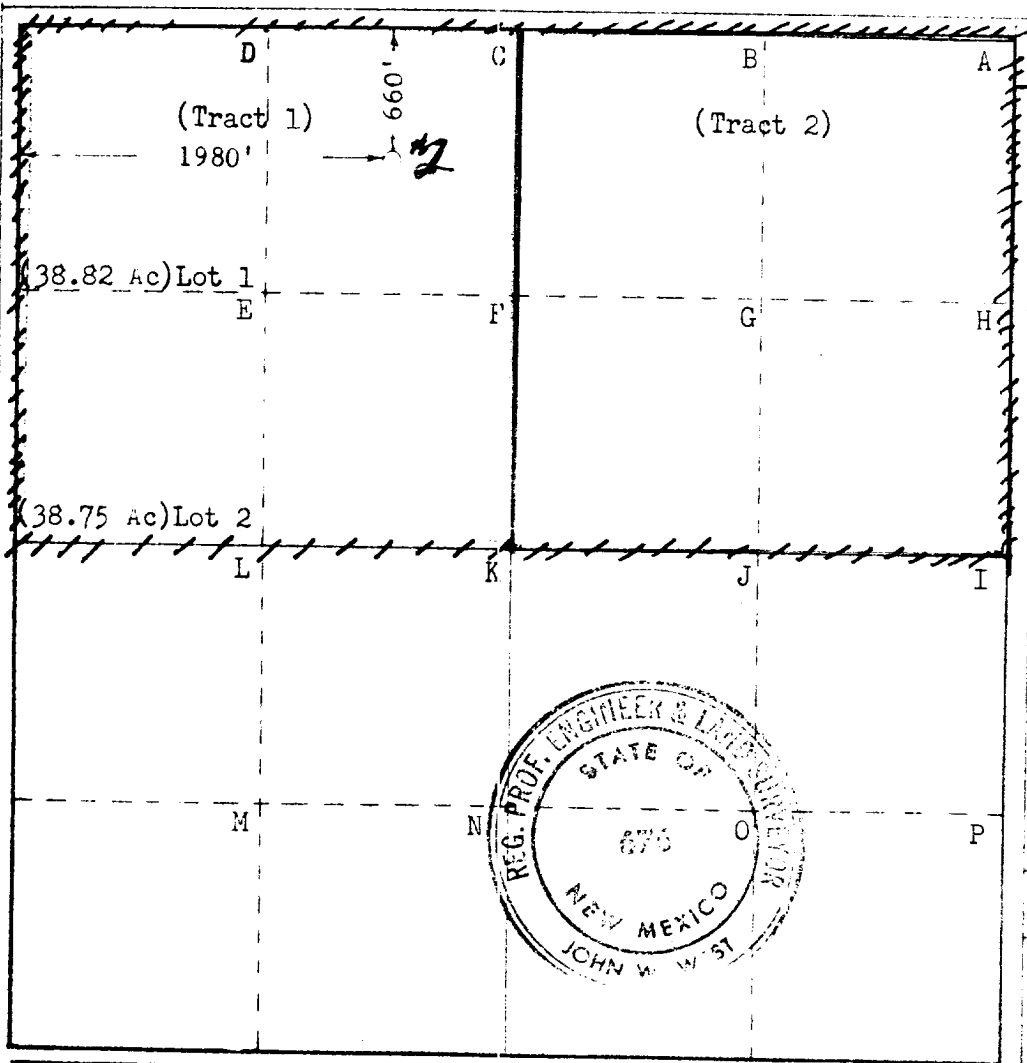
Operator PHILLIPS PETROLEUM CO.				Lease DRAG B "COM"		Acres 2	
Well Letter C	Section 19	Township 23 SOUTH	Range 27 EAST	County EDDY			
Actual Footage Location of Well: 660 feet from the NORTH line and 1980 feet from the WEST line							
Ground Level Elev. 3209' Gr.	Producing Formation Morrow		Foot Carlsbad, So. (Morrow) - Gas		Well Head A Height 317.57		

1. Outline the acreage dedicated to the subject well by colored pencil or hatchure marks on the plat below.
2. If more than one lease is dedicated to the well, outline each and identify the ownership thereof (both as to working interest and royalty).
See attached.
3. If more than one lease of different ownership is dedicated to the well, have the interests of all owners been consolidated by communitization, unitization, force-pooling, etc?

☒ Yes ☐ No If answer is "yes," type of consolidation Communitization

If answer is "no," list the owners and tract descriptions which have actually been consolidated (if so reverse side of this form if necessary)

No allowable will be assigned to the well until all interests have been consolidated (by communitization, unitization, forced-pooling, or otherwise) or until a non-standard unit, eliminating such interests, has been approved by the Commission.



CERTIFICATION

I hereby certify that the information contained herein is true and complete to the best of my knowledge and belief.

[Signature]
W. J. Mueller

Senior Reservoir Engineer
Phillips Petroleum Company

December 11, 1972

I hereby certify that the well location shown on this plat was plotted from field notes of actual survey made by me under my supervision, and that the same is true and correct to the best of my knowledge and belief.

RECEIVED
DEC 13 1972
U.S. GEOLOGICAL SURVEY
ARTESIA, NEW MEXICO

Date Surveyed

DECEMBER 7, 1972

Registered Professional Engineer
and State Surveyor

[Signature]
John W. West
Certificate No. **676**