

N MEXICO OIL CONSERVATION COMMISS
WELL LOCATION AND ACREAGE DEDICATION PLAT

RECEIVED
Form C-102
Supersedes C-178
Effective 1-1-65

All distances must be from the outer boundaries of the Section.

DEC 15 1972

Operator TEXAS AMERICAN OIL CORP.		Lease TODD 23 FEDERAL O.G.C.		Well No. 1
Unit Letter O	Section 23	Township 23 SOUTH	Range 31 EAST	County ARTESIA, OFFICE EDDY

Actual Footage Location of Well:

660 feet from the **SOUTH** line and **1650** feet from the **EAST** line

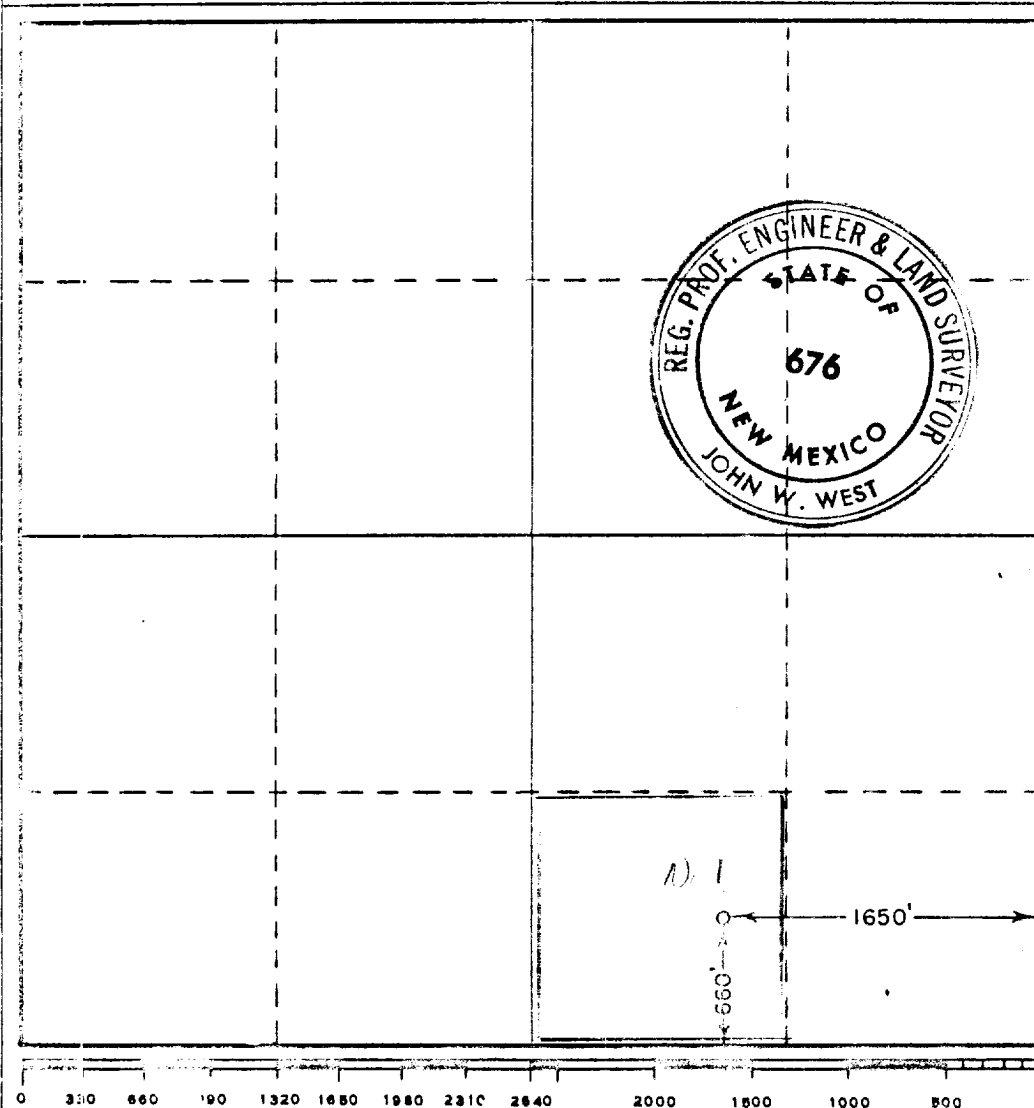
Ground Level Elev. 3450.3	Producing Formation Cherry Canyon	Pool Sand Dunes (Cherry Canyon)	Dedicated Acreage: 40 Acres
-------------------------------------	---	---	---------------------------------------

1. Outline the acreage dedicated to the subject well by colored pencil or hatchure marks on the plat below.
2. If more than one lease is dedicated to the well, outline each and identify the ownership thereof (both as to working interest and royalty).
3. If more than one lease of different ownership is dedicated to the well, have the interests of all owners been consolidated by communitization, unitization, force-pooling, etc?

☐ Yes ☐ No If answer is "yes," type of consolidation _____

If answer is "no," list the owners and tract descriptions which have actually been consolidated. (Use reverse side of this form if necessary.) _____

No allowable will be assigned to the well until all interests have been consolidated (by communitization, unitization, forced-pooling, or otherwise) or until a non-standard unit, eliminating such interests, has been approved by the Commission.



CERTIFICATION

I hereby certify that the information contained herein is true and complete to the best of my knowledge and belief.

Name
N. T. Emanuel
Position
Engineer
Company
Texas American Oil Corp.
Date
December 14, 1972

I hereby certify that the well location shown on this plat was plotted from field notes of actual surveys made by me or under my supervision, and that the same is true and correct to the best of my knowledge and belief.

Date Surveyed
NOVEMBER 27, 1972
Registered Professional Engineer and/or Land Surveyor

Certificate No.
676