

W MEXICO OIL CONSERVATION COMMISSION
WELL LOCATION AND ACREAGE DEDICATION PLAT

RECEIVED
Form C-102
Supersedes C-128
Effective 1-1-65

All distances must be from the outer boundaries of the Section.

JAN 5 1973

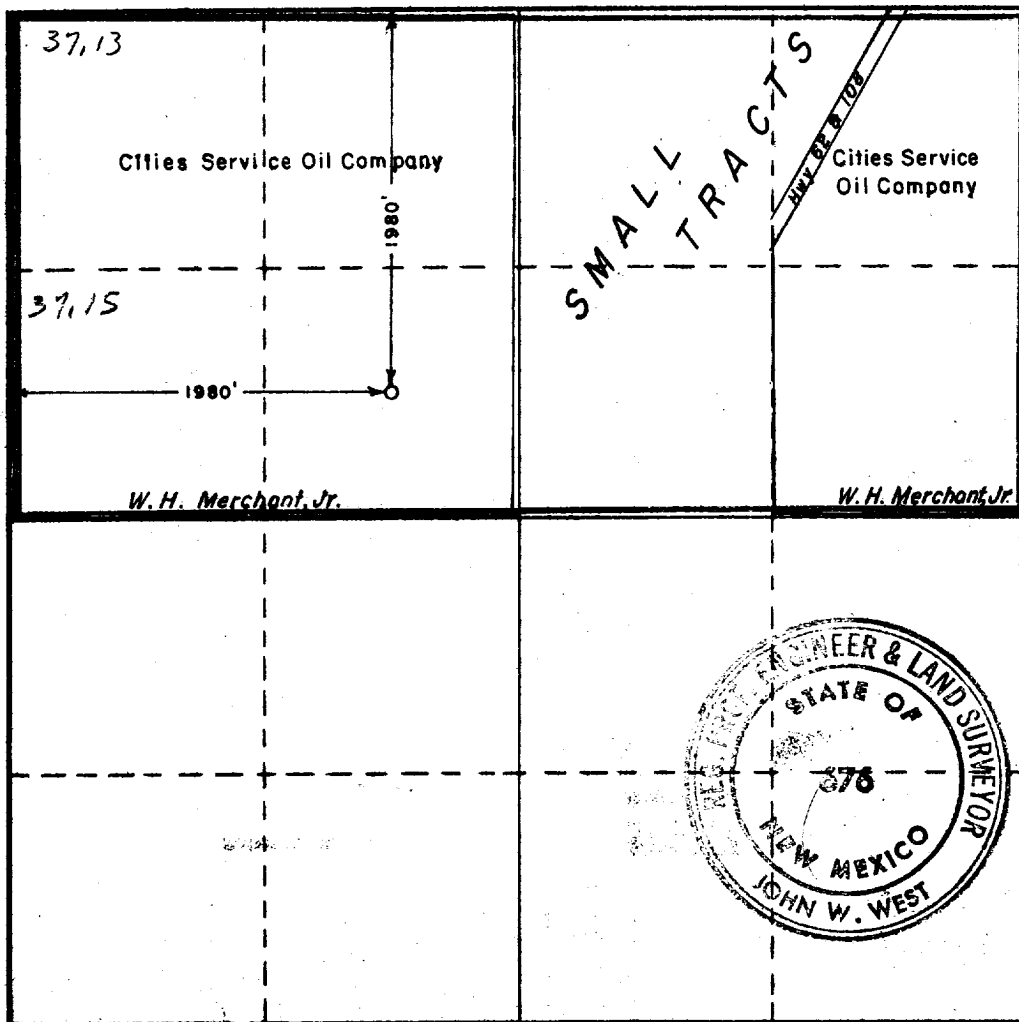
Operator CITIES SERVICE OIL COMPANY			Lease Merland "C"		Well No. 1
Unit Letter F	Section 19	Township 22 SOUTH	Range 27 EAST	County EDDY	
Actual Footage Location of Well: 1980 feet from the NORTH line and 1980 feet from the WEST line					
Ground Level Elev. 3200 est.	Producing Formation Morrow		Pool Undes. So. Carlsbad Morrow	Dedicated Acreage: 314.30 Acres	

- Outline the acreage dedicated to the subject well by colored pencil or hatchure marks on the plat below.
- If more than one lease is dedicated to the well, outline each and identify the ownership thereof (both as to working interest and royalty).
- If more than one lease of different ownership is dedicated to the well, have the interests of all owners been consolidated by communitization, unitization, force-pooling, etc?

☒ Yes ☐ No If answer is "yes," type of consolidation force-pooling R-4239-A
11-27-72

If answer is "no," list the owners and tract descriptions which have actually been consolidated. (Use reverse side of this form if necessary.)

No allowable will be assigned to the well until all interests have been consolidated (by communitization, unitization, forced-pooling, or otherwise) or until a non-standard unit, eliminating such interests, has been approved by the Commission.



CERTIFICATION

I hereby certify that the information contained herein is true and complete to the best of my knowledge and belief.

E. J. J. J.

Name
Region Operation Manager
Position
Cities Service Oil Company
Company
January 2, 1973
Date

I hereby certify that the well location shown on this plat was plotted from field notes of actual surveys made by me or under my supervision, and that the same is true and correct to the best of my knowledge and belief.

OCTOBER 6, 1972

Date Surveyed
John W. West
Registered Professional Engineer
and/or Land Surveyor

Certificate No. **676**



RECEIVED

JAN 15 1973

D. C. C.
ARTESIA, OFFICE