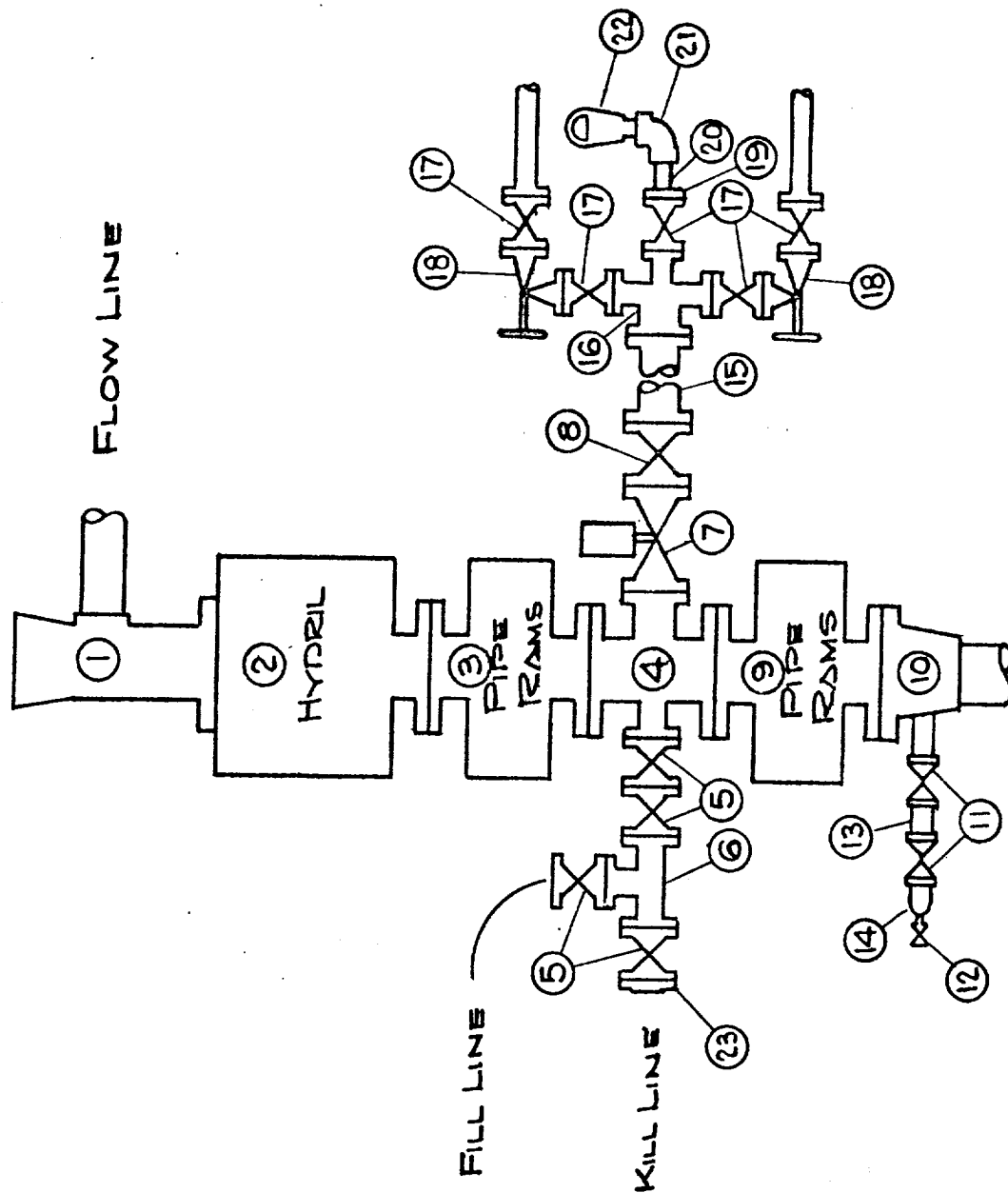


# MIDCONTINENT DIVISION BLOWOUT PREVENTER SPECIFICATION TYPE II

INSTALL ON SURFACE CASING  
12,000-Foot  
SOUTH CARLSBAD POOL WELL



BLOWOUT PREVENTER SPECIFICATION  
EQUIPMENT DESCRIPTION

TYPE II

All equipment should be at least 2,000 psi WP or higher unless otherwise specified.

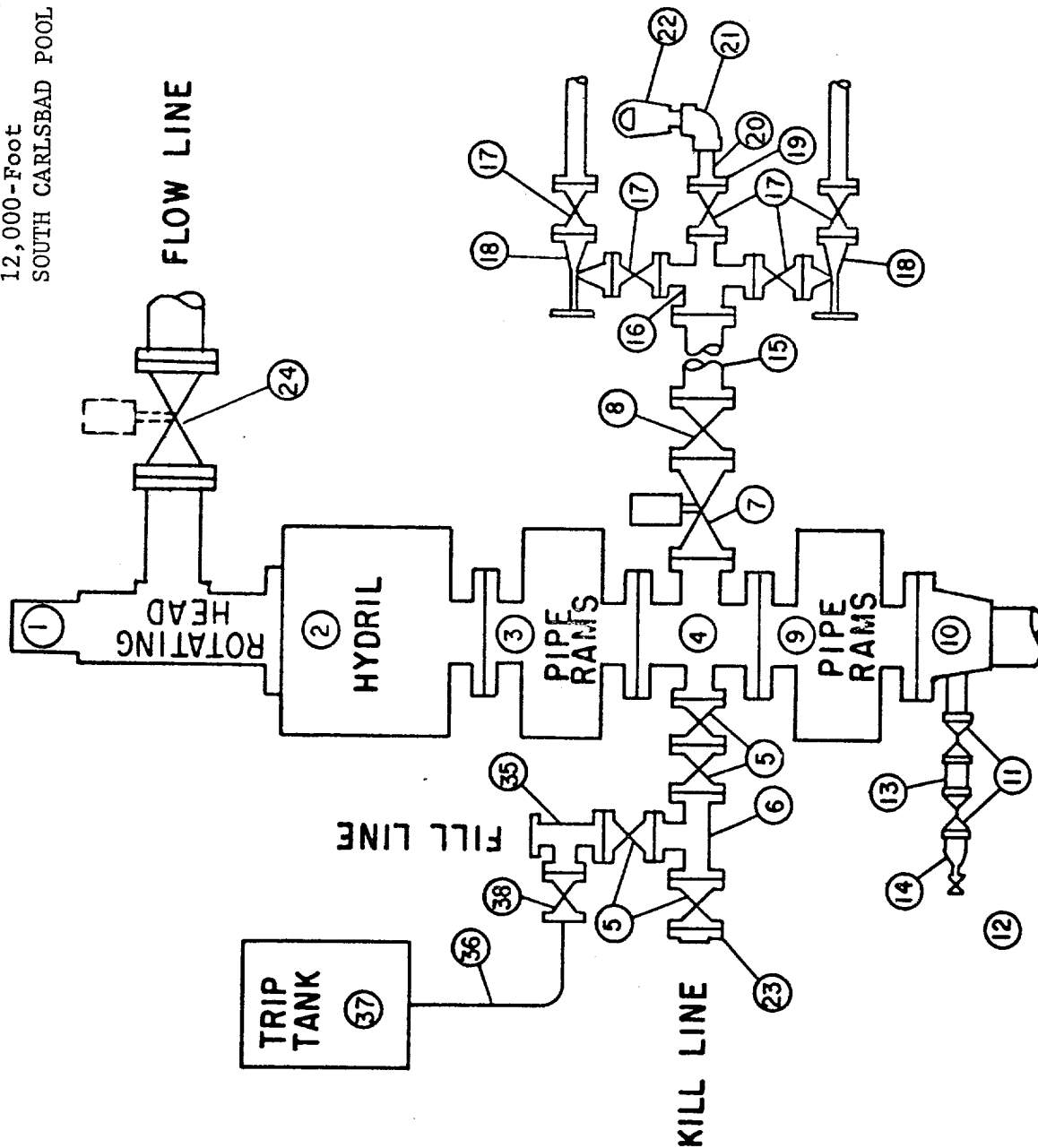
1. Bell nipple.
2. Hydril or equivalent bag type preventer.
3. Ram type pressure operated blowout preventer with pipe rams.
4. Flanged spool with one 4-inch and one 2-inch (minimum) outlet.
5. 2-inch (minimum) flanged plug or gate valve.
6. 2-inch by 2-inch by 2-inch (minimum) flanged tee.
7. 4-inch pressure operated gate valve.
8. 4-inch flanged gate or plug valve.
9. Ram type pressure operated blowout preventer with pipe rams.
10. Flanged type casing head with one side outlet (furnished by Exxon).
11. 2-inch threaded (or flanged) plug or gate valve (furnished by Exxon).  
Flanged on 5000# WP, threaded on 3000# WP or less.
12. Needle valve (furnished by Exxon).
13. 2-inch nipple (furnished by Exxon).
14. Tapped bull plug (furnished by Exxon).
15. 4-inch flanged spacer spool.
16. 4-inch by 2-inch by 2-inch by 2-inch flanged cross.
17. 2-inch flanged plug or gate valve.
18. 2-inch flanged adjustable choke.
19. 2-inch threaded flange.
20. 2-inch XXH nipple.
21. 2-inch forged steel 90° Ell.
22. Cameron (or equal.) threaded pressure gage.
23. Threaded flange.

NOTES:

1. Items 3, 4, and 9 may be replaced with double ram type preventer with side outlets between the rams.
2. The two valves next to the stack on the fill and kill line to be closed unless drill string is being pulled.
3. Kill line is for emergency use only. This connection shall not be used for filling.
4. Replacement pipe rams and blind rams shall be on location at all times.
5. Only type U, LWS, and QRC ram type preventers acceptable.

# MIDCONTINENT DIVISION BLOWOUT PREVENTER SPECIFICATION TYPE II -B

INSTALL ON INTERMEDIATE CASING  
12,000-Foot  
SOUTH CARLSBAD POOL WELL



BLOWOUT PREVENTER SPECIFICATION  
EQUIPMENT DESCRIPTION

---

TYPE II- B

All equipment should be at least 3,000 psi WP or higher unless otherwise specified.

1. Rotating BOP.
2. Hydril or equivalent bag type preventer.
3. Ram type pressure operated blowout preventer with pipe rams.
4. Flanged spool with one 4-inch and one 2-inch (minimum) outlet.
5. 2-inch (minimum) flanged plug or gate valve.
6. 2-inch by 2-inch by 2-inch (minimum) flanged tee.
7. 4-inch pressure operated gate valve.
8. 4-inch flanged gate or plug valve.
9. Ram type pressure operated blowout preventer with pipe rams.
10. Flanged type casing head with one side outlet (furnished by Exxon).
11. 2-inch threaded (or flanged) plug or gate valve (furnished by Exxon).  
Flanged on 5000# WP, threaded on 3000# WP or less.
12. Needle valve (furnished by Exxon).
13. 2-inch nipple (furnished by Exxon).
14. Tapped bull plug (furnished by Exxon).
15. 4-inch flanged spacer spool.
16. 4-inch by 2-inch by 2-inch by 2-inch flanged cross.
17. 2-inch flanged plug or gate valve.
18. 2-inch flanged adjustable choke.
19. 2-inch threaded flange.
20. 2-inch XXH nipple.
21. 2-inch forged steel 90° Ell.
22. Cameron (or equal.) threaded pressure gage.
23. Threaded flange.
24. 6-inch manual or pressure operated gate valve.
35. 2-inch flanged tee.
36. 3-inch (minimum) hose. (Furnished by Exxon).
37. Trip tank. (Furnished by Exxon).
38. 2" flanged plug or gate valve.

NOTES:

1. Items 3, 4, and 9 may be replaced with double ram type preventer with side outlets between the rams.
2. The two valves next to the stack on the fill and kill line to be closed unless drill string is being pulled.
3. Kill line is for emergency use only. This connection shall not be used for filling.
4. Replacement pipe rams and blind rams shall be on location at all times.
5. Only type U, LWS and QRC ram type preventers acceptable.

RECEIVED

MAR 27 1973

O. G. C.  
ARTESIA, OFFICE