

MEXICO OIL CONSERVATION COMMISSION
WELL LOCATION AND ACREAGE DEDICATION PLAT

Form C-102
 Supersedes C-128
 Effective 1-1-65

All distances must be from the outer boundaries of the Section

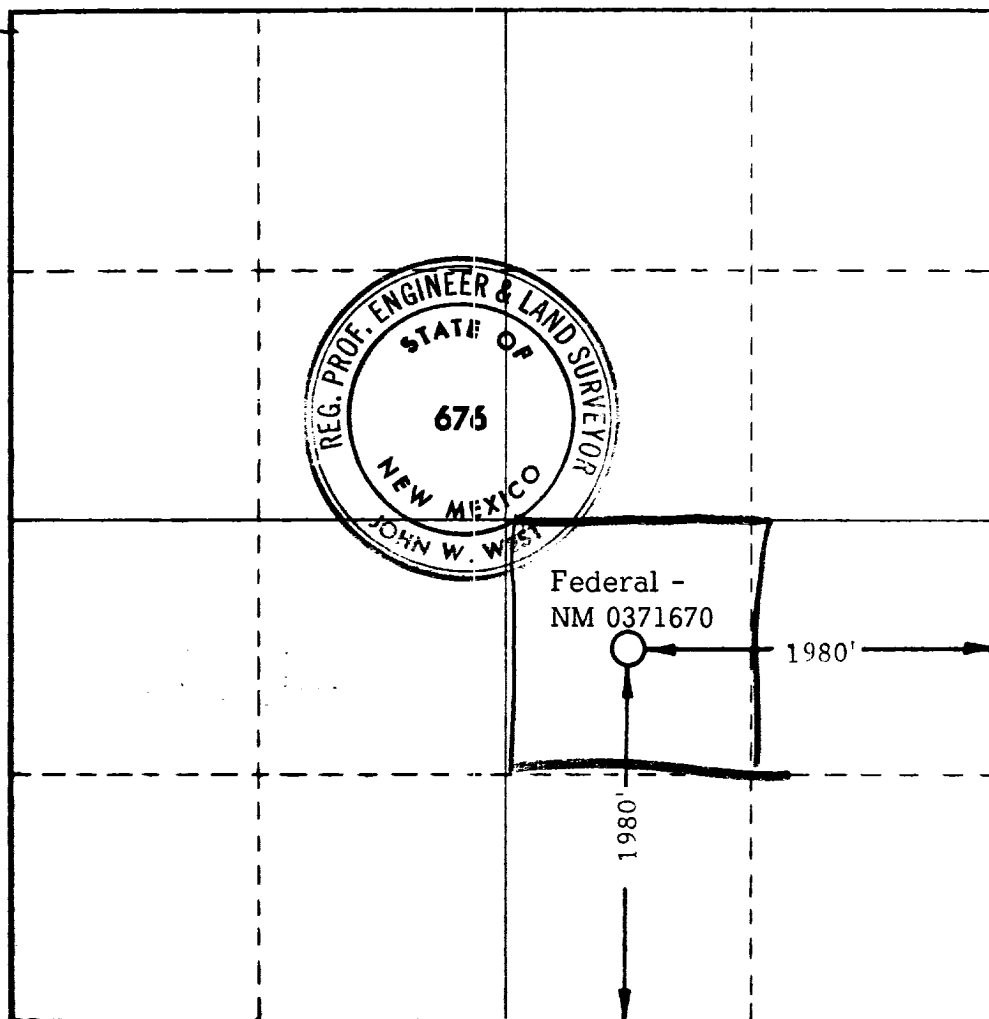
| | | | | | |
|--|---|-----------------------------|---------------------------|-----------------------|---------------------------------------|
| Operator R. J. ZONNE | | | Lease FEDERAL A | | Well No. 1 |
| Unit Letter J | Section 24 | Township 22 SOUTH | Range 31 EAST | County EDDY | |
| Actual Footage Location of Well: 1980 feet from the SOUTH line and 1980 feet from the EAST line | | | | | |
| Ground Level Elev. 3581' | Producing Formation Delaware Sand | | Pool W. C. | | Dedicated Acreage: 40 Acres |

1. Outline the acreage dedicated to the subject well by colored pencil or hachure marks on the plat below.
2. If more than one lease is dedicated to the well, outline each and identify the ownership thereof (both as to working interest and royalty).
3. If more than one lease of different ownership is dedicated to the well, have the interests of all owners been consolidated by communitization, unitization, force-pooling, etc?

☒ Yes ☐ No If answer is "yes," type of consolidation Communitization

If answer is "no," list the owners and tract descriptions which have actually been consolidated. (Use reverse side of this form if necessary.) _____

No allowable will be assigned to the well until all interests have been consolidated (by communitization, unitization, forced-pooling, or otherwise) or until a non-standard unit, eliminating such interests, has been approved by the Commission.



CERTIFICATION

I hereby certify that the information contained herein is true and complete to the best of my knowledge and belief.

Name _____
 Position **Operator**
 Company _____

Date **4-19-73**

I hereby certify that the location shown on this plat was plotted from field notes of actual survey by me or under my supervision, and the same is true and correct to the best of my knowledge.

RECEIVED
APR 19 1973
U.S. GEOLOGICAL SURVEY
ARTESIA, NEW MEXICO

Date Surveyed
APRIL 15, 1973

Registered Professional Engineer and/or Land Surveyor

John W. West
 Certificate No. **676**

