

UNITED STATES
DEPARTMENT OF THE INTERIOR
GEOLOGICAL SURVEYForm Approved.
Budget Bureau No. 42-R1424

SUNDRY NOTICES AND REPORTS ON WELLS

(Do not use this form for proposals to drill or to deepen or plug back to a different reservoir. Use Form 9-331-C for such proposals.)

1. oil ☐ gas ☒ other ☐
well ☐ well ☒
2. NAME OF OPERATOR
Mobil Producing TX. & N.M. Inc.
3. ADDRESS OF OPERATOR 77046
Nine Greenway Plaza, Ste. 2700; Hou., TX
4. LOCATION OF WELL (REPORT LOCATION CLEARLY. See space 17 below.)
AT SURFACE: 660' FSL & 1980' FWL
AT TOP PROD. INTERVAL: Same as surface
AT TOTAL DEPTH: Same as surface
16. CHECK APPROPRIATE BOX TO INDICATE NATURE OF NOTICE, REPORT, OR OTHER DATA

REQUEST FOR APPROVAL TO:

- TEST WATER SHUT-OFF ☐
FRACTURE TREAT ☐
SHOOT OR ACIDIZE ☐
REPAIR WELL ☐
PULL OR ALTER CASING ☐
MULTIPLE COMPLETE ☐
CHANGE ZONES ☒
ABANDON* ☐
(other) ☐

SUBSEQUENT REPORT OF:

RECEIVED
JAN - 5 1982
OIL & GAS
U.S. GEOLOGICAL SURVEY
ROSVELL, NEW MEXICO

5. LEASE NM-027994-D	
6. IF INDIAN, ALLOTTEE OR TRIBE NAME	
7. UNIT AGREEMENT NAME	
8. FARM OR LEASE NAME Federal LL	
9. WELL NO. 1	
10. FIELD OR WILDCAT NAME Wildcat	
11. SEC., T., R., M. OR BLK. AND SURVEY OR AREA Sec. 13, T235, R26E	
12. COUNTY OR PARISH Eddy	13. STATE New Mexico
14. API NO.	
15. ELEVATIONS (SHOW DF, KDB, AND WD) 3240.8 - Ground	

17. DESCRIBE PROPOSED OR COMPLETED OPERATIONS (Clearly state all pertinent details, and give pertinent dates, including estimated date of starting any proposed work. If well is directionally drilled, give subsurface locations and measured and true vertical depths for all markers and zones pertinent to this work.)*

Well #1 is presently completed as a dual gas well in the Carlsbad, South (Canyon) and (Morrow) Pools. Both zones are temporarily abandoned. Mobil Producing TX. & N.M. Inc. plans to abandon these zones by setting bridge plugs at 11,360 feet and 10,160 feet, capping each bridge plug with seven sacks of Class H neat cement. An undesignated Pennsylvania (Ciseco) zone will be tested with perforations at 9956-9963 feet; 10,006-10,012 feet; and 10,020-10,025 feet.

* with dump boiler or 25xx if thru tubing

Subsurface Safety Valve: Manu. and Type

Set @ Ft.

18. I hereby certify that the foregoing is true and correct

SIGNED A.D. Bond A.D. Bond Regulatory Engineering
TITLE Coordinator II DATE December 28, 1981

APPROVED
(Orig. Sgd.) PETER W. GILLHAM
(This space for Federal or State office use)

APPROVED BY
CONDITIONS OF APPROVAL, IF ANY: TITLE DATE

JAN 5 1982

FOR
JAMES A. GILLHAM
DISTRICT SUPERVISOR

See Instructions on Reverse Side



**NEW MEXICO OIL CONSERVATION COMMISSION
WELL LOCATION AND ACREAGE DEDICATION PLAT**

Form C-102
Supersedes C-128
Effective 1-1-65

All distances must be from the outer boundaries of the Section.

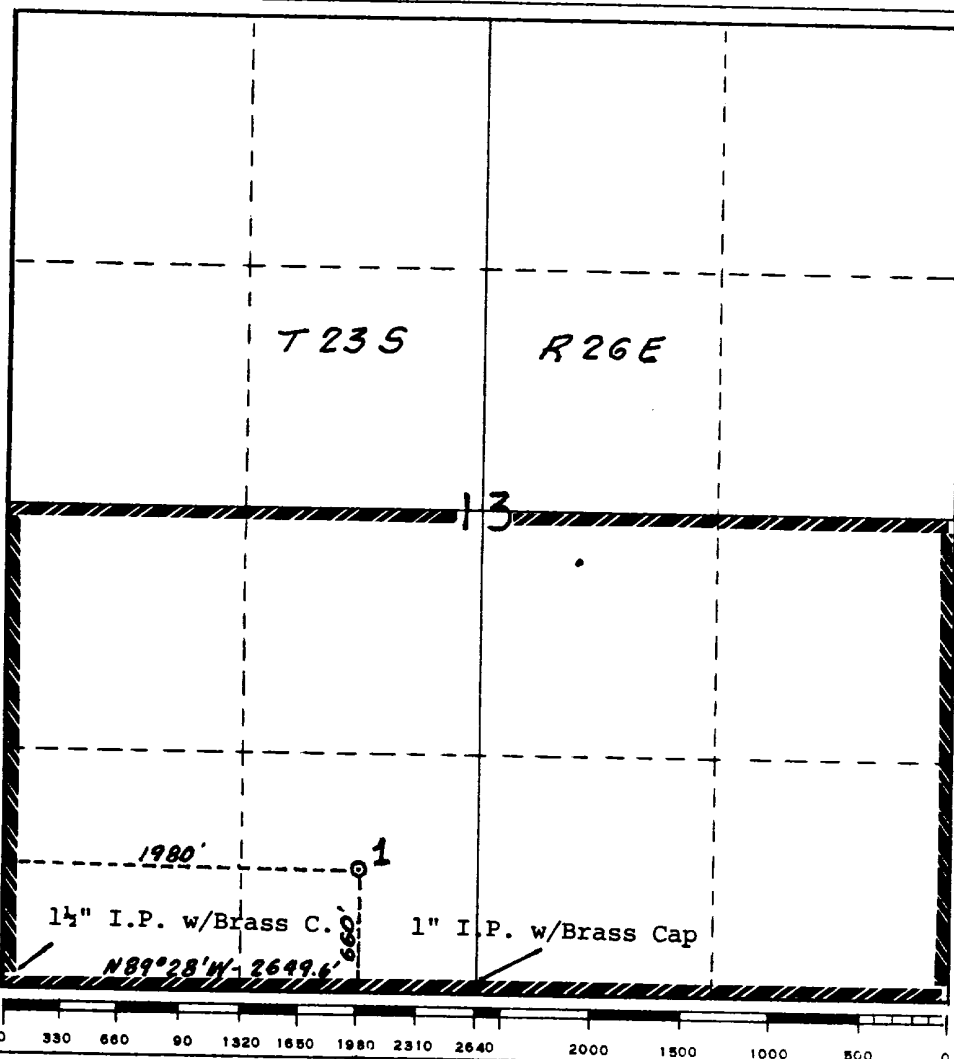
Operator Mobil Producing TX. & N.M. Inc.			Lease Federal LL		Well No. 1
Unit Letter N	Section 13	Township 23-S	Range 26-E	County Eddy	
Actual Footage Location of Well: 660' feet from the South line and 1980' feet from the West line					
Ground Level Elev. 3240.8	Producing Formation <i>Wolfcamp</i> Pennsylvanian (Cisco)		Pool Wildcat	Dedicated Acreage: 320 Acres	

1. Outline the acreage dedicated to the subject well by colored pencil or hatchure marks on the plat below.
2. If more than one lease is dedicated to the well, outline each and identify the ownership thereof (both as to working interest and royalty).
3. If more than one lease of different ownership is dedicated to the well, have the interests of all owners been consolidated by communitization, unitization, force-pooling, etc?

☐ Yes ☐ No If answer is "yes," type of consolidation _____

If answer is "no," list the owners and tract descriptions which have actually been consolidated. (Use reverse side of this form if necessary.) _____

No allowable will be assigned to the well until all interests have been consolidated (by communitization, unitization, forced-pooling, or otherwise) or until a non-standard unit, eliminating such interests, has been approved by the Commission.



CERTIFICATION

I hereby certify that the information contained herein is true and complete to the best of my knowledge and belief.

A. D. Bond

Name

A.D. Bond

Position

Regulatory Engineering Coordinator II

Company

Mobil Producing TX. & N.M. Inc.

Date

December 28, 1981

I hereby certify that the well location shown on this plat was plotted from field notes of actual surveys made by me or under my supervision, and that the same is true and correct to the best of my knowledge and belief.

Date Surveyed

Registered Professional Engineer and/or Land Surveyor

Certificate No.

Called N 0° 09' E