

**N MEXICO OIL CONSERVATION COMMISSION
WELL LOCATION AND ACREAGE DEDICATION PLAT**

Form C-102
Supersedes C-128
Effective 1-1-65

All distances must be from the outer boundaries of the Section.

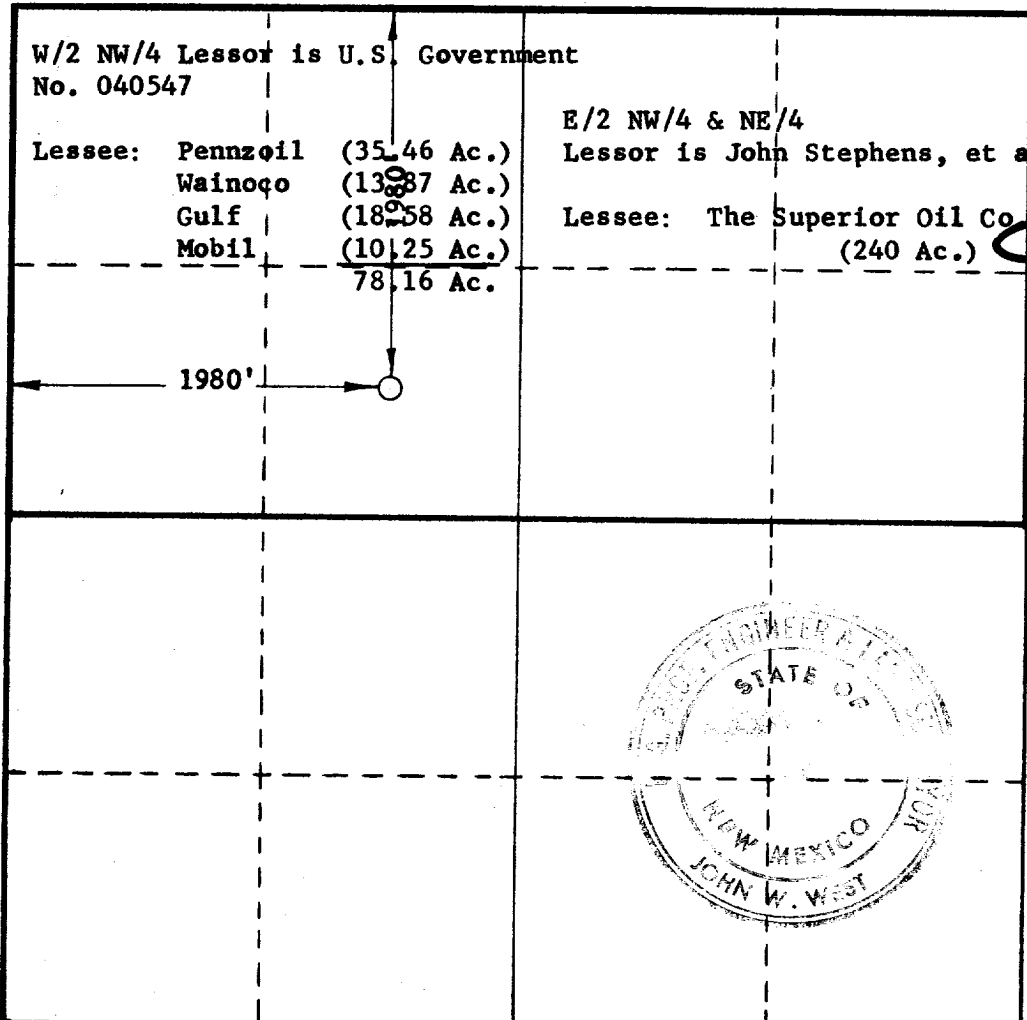
Operator THE SUPERIOR OIL COMPANY			Lease STEPHENS STEVENS		Well No. 1
Unit Letter F	Section 7	Township 23 SOUTH	Range 27 EAST	County EDDY	
Actual Footage Location of Well: <div style="display: flex; justify-content: space-between;"> 1980 feet from the NORTH line and 1980 feet from the WEST line </div>					
Ground Level Elev. 32140	Producing Formation Morrow		Pool South Carlsbad		Dedicated Acreage: 318.16 Acres

1. Outline the acreage dedicated to the subject well by colored pencil or hatchure marks on the plat below.
2. If more than one lease is dedicated to the well, outline each and identify the ownership thereof (both as to working interest and royalty).
3. If more than one lease of different ownership is dedicated to the well, have the interests of all owners been consolidated by communitization, unitization, force-pooling, etc?

☐ Yes ☒ No If answer is "yes," type of consolidation Communitization of acreage in N/2 Section 7, T-23-S, R-27-E is currently being processed.

If answer is "no," list the owners and tract descriptions which have actually been consolidated. (Use reverse side of this form if necessary.) _____

No allowable will be assigned to the well until all interests have been consolidated (by communitization, unitization, forced-pooling, or otherwise) or until a non-standard unit, eliminating such interests, has been approved by the Commission.



CERTIFICATION

I hereby certify that the information contained herein is true and complete to the best of my knowledge and belief.

Terry Blay
Name
Terry Blay
Position
Petroleum Engineer

Company
The Superior Oil Company

Date
May 18, 1973

I hereby certify that the well location shown on this plat was plotted from field notes of actual surveys made by me or under my supervision, and that the same is true and correct to the best of my knowledge and belief.

Date Surveyed
MAY 15, 1973

Registered Professional Engineer and/or Land Surveyor

John W. West
Certificate No.

676

