

NEW MEXICO OIL CONSERVATION COMMISSION
WELL LOCATION AND ACREAGE DEDICATION PLAT

RECEIVED

Form O-102
Supersedes C-128
Effective 1-1-65

JUN 1973

All distances must be from the outer boundaries of the Section.

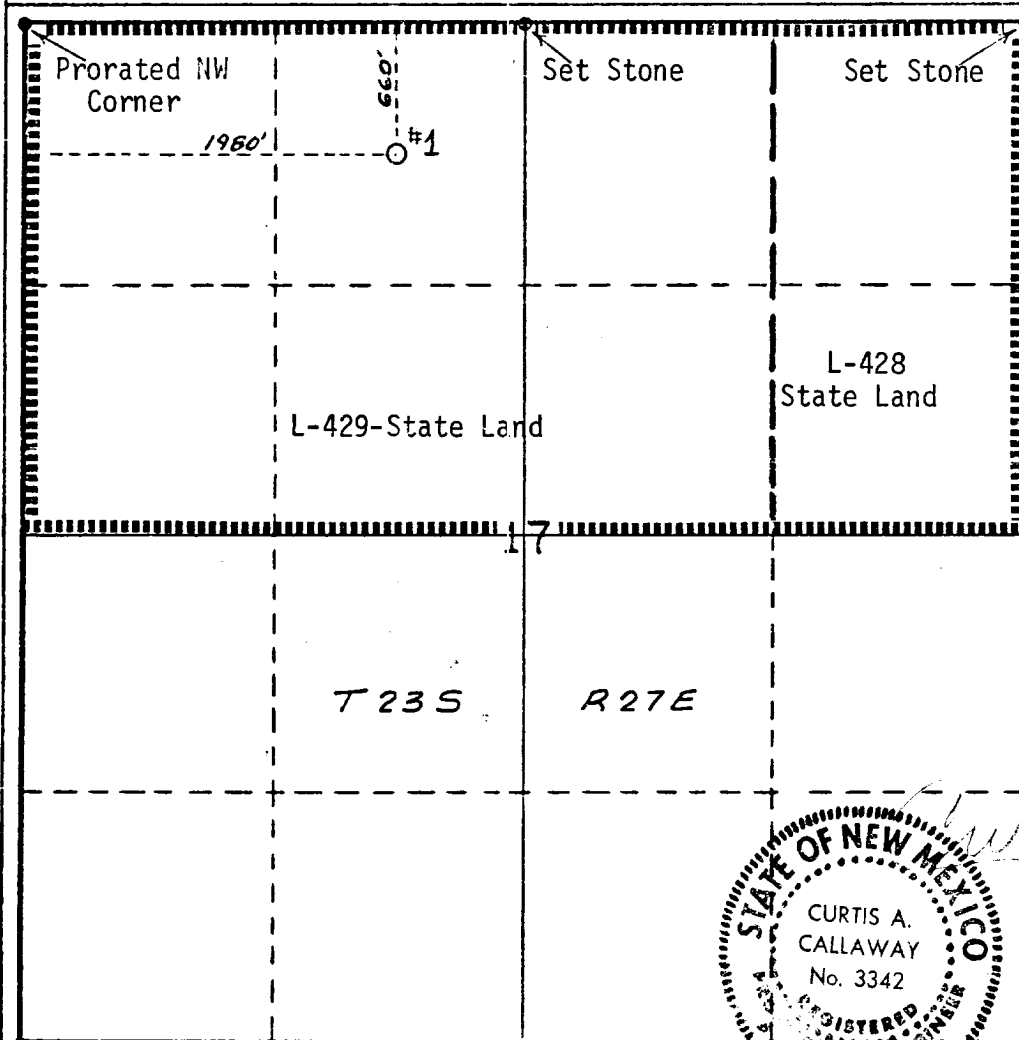
Operator Mobil Oil Corporation		Lease State QQ Com		Well No. 0. J. L. 1	
Unit Letter C	Section 17	Township 23S	Range 27E	County Eddy	
Actual Footage Location of Well:					
660 feet from the North		line and 1980 feet from the West		line	
Ground Level Elev. 3178	Producing Formation Morrow	Pool Undesignated	Dedicated Acreage: 320 Acres		

1. Outline the acreage dedicated to the subject well by colored pencil or hachure marks on the plat below.
2. If more than one lease is dedicated to the well, outline each and identify the ownership thereof (both as to working interest and royalty).
3. If more than one lease of different ownership is dedicated to the well, have the interests of all owners been consolidated by communitization, unitization, force-pooling, etc?

☒ Yes ☐ No If answer is "yes," type of consolidation Communitization Pending

If answer is "no," list the owners and tract descriptions which have actually been consolidated. (Use reverse side of this form if necessary.)

No allowable will be assigned to the well until all interests have been consolidated (by communitization, unitization, forced-pooling, or otherwise) or until a non-standard unit, eliminating such interests, has been approved by the Commission. East - 2625.28' S 89°43' E 2615'



CERTIFICATION

I hereby certify that the information contained herein is true and complete to the best of my knowledge and belief.

A. D. Bond
Name
A. D. Bond
Position
Proration Staff Assistant
Company
Mobil Oil Corporation
Date
May 31, 1973

I hereby certify that the well location shown on this plat was plotted from field notes of actual surveys made by me or under my supervision, and that the same is true and correct to the best of my knowledge and belief.

Curtis A. Callaway
Date Surveyed
May 30, 1973
Registered Professional Engineer and/or Land Surveyor

C. A. Callaway

Certificate No. 3342

