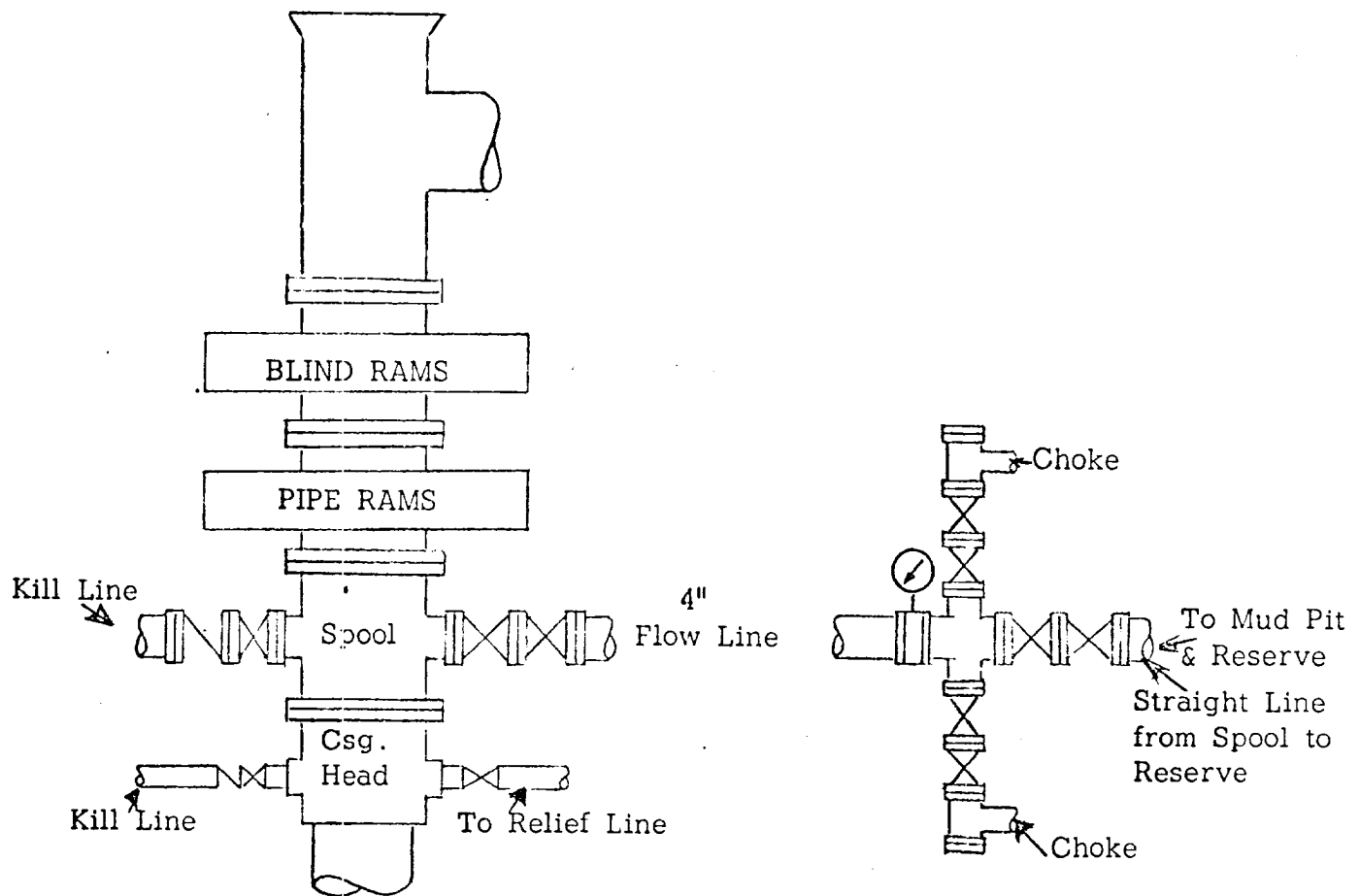


PARKER DRILLING CO
 RIG 16 LOCATION PLAT
 SCALE: 1/4" = 1'-0" DRAWN: 6-29-72
 SUGGESTED LOCATION SIZE:
 228 E-W BY 204 N-S



Minimum assembly will consist of two hydraulically operated ram type preventers. If double type preventers are provided, the flanged outlets of the preventer may be used for the flow line and kill line. Minimum operating equipment for the preventers will be: (1) An air operated pump(s) and (2) an accumulator(s) with means of obtaining a fluid charge. Sufficient fluid capacity in the accumulator(s) shall be available to close all the pressure operated devices at the same time with 25 percent reserve. Hydraulic oil shall be used as the operating fluid. Seamless steel piping shall be used to connect from the closing unit to the preventers. The choke manifold and flow line shall be supported by metal stands. The choke lines shall be anchored. No sharp bends or curves will be permitted in the flow line from the preventers to the pits. Easy and safe access will be maintained to choke manifold at all times. The ram type preventers will be provided with stem extensions, universal joints if needed, and operating wheels which are to extend beyond edge of derrick substructure.