

N MEXICO OIL CONSERVATION COMMISS
WELL LOCATION AND ACREAGE DEDICATION PLAT

RECEIVED

Form O-102
Supersedes C-128
Effective 1-1-65

All distances must be from the outer boundaries of the Section.

MAY 13 1983

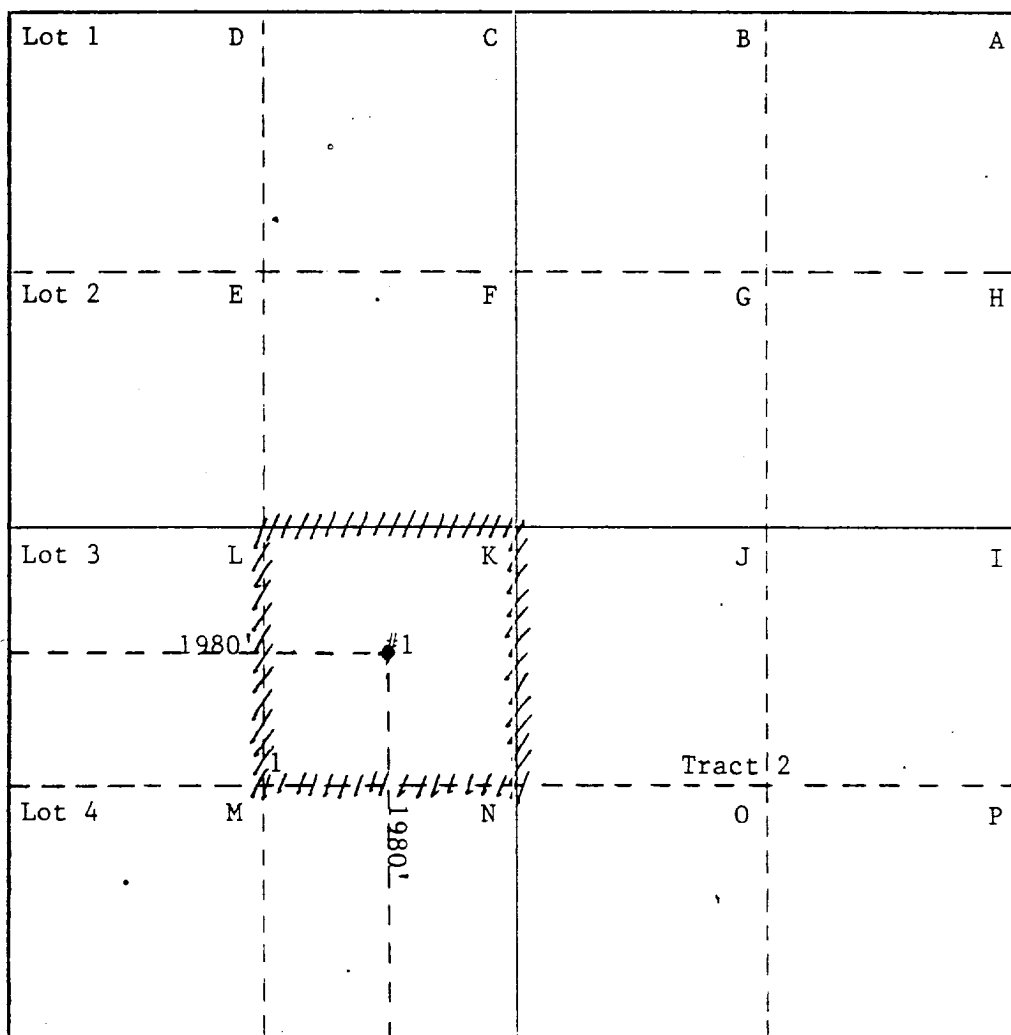
Operator Phillips Petroleum Company			Lease Drag-C		Well No. O. C. D. 1
Unit Letter K	Section 19	Township 23-S	Range 27-E	County ARTESIA, OFFICE	
Actual Footage Location of Well:					
1980 feet from the south line and		1980 feet from the west line			
Ground Level Elev. 3205' Gr	Producing Formation Bone Springs	Pool Undesignated	Dedicated Acreage: 40 Acres		

1. Outline the acreage dedicated to the subject well by colored pencil or hachure marks on the plat below.
2. If more than one lease is dedicated to the well, outline each and identify the ownership thereof (both as to working interest and royalty).
3. If more than one lease of different ownership is dedicated to the well, have the interests of all owners been consolidated by communitization, unitization, force-pooling, etc?

☐ Yes ☐ No If answer is "yes," type of consolidation _____

If answer is "no," list the owners and tract descriptions which have actually been consolidated. (Use reverse side of this form if necessary.) _____

No allowable will be assigned to the well until all interests have been consolidated (by communitization, unitization, forced-pooling, or otherwise) or until a non-standard unit, eliminating such interests, has been approved by the Commission.



CERTIFICATION

I hereby certify that the information contained herein is true and complete to the best of my knowledge and belief.

W.J. Mueller
Name
Senior Engineering Specialist
Position
Phillips Petroleum Company
Company
May 13, 1983
Date

I hereby certify that the well location shown on this plat was plotted from field notes of actual surveys made by me or under my supervision, and that the same is true and correct to the best of my knowledge and belief.

Date Surveyed
July 2, 1973
Registered Professional Engineer
and/or Land Surveyor

John W. West
Certificate No.