

NO. OF COPIES RECEIVED 6
DISTRIBUTION
SANTA FE 1
FILE 1
U.S.G.S. 2
LAND OFFICE 1
OPERATOR 1

NEW MEXICO OIL CONSERVATION COMMISSION

RECEIVED

JUL 11 1973

30-015-20899

Form C-101
Revised 1-1-65

5A. Indicate Type of Lease
STATE [X] FEE []
5. State Oil & Gas Lease No.
05229
7. Unit Agreement Name
Forty-Niner Ridge Unit
8. Farm or Lease Name
Forty-Niner Ridge 16
9. Well No.
1
10. Field and Pool, or Wildcat
Wildcat
12. County
Eddy
19. Proposed Depth
15,600'
19A. Formation
Siluro-Devonian
20. Rotary or C.T.
Rotary
21. Elevations (Show whether DF, RT, etc.)
3170.6'
21A. Kind & Status Plug. Bond
Blanket Bond #1253688
21B. Drilling Contractor
To be selected
22. Approx. Date Work will start
July 22, 1973

APPLICATION FOR PERMIT TO DRILL, DEEPEN, OR PLUG BACK
1a. Type of Work
ARTESIAN, SPRING
b. Type of Well
DRILL [X] DEEPEN [] PLUG BACK []
OIL WELL [] GAS WELL [X] OTHER []
SINGLE ZONE [] MULTIPLE ZONE []
2. Name of Operator
Skelly Oil Company
3. Address of Operator
P. O. Box 1351, Midland, Texas 79701
4. Location of Well
UNIT LETTER J LOCATED 1980 FEET FROM THE South LINE
AND 1980 FEET FROM THE East LINE OF SEC. 16 TWP. 23S RGE. 30E NMPM
19. Proposed Depth
15,600'
19A. Formation
Siluro-Devonian
20. Rotary or C.T.
Rotary
21. Elevations (Show whether DF, RT, etc.)
3170.6'
21A. Kind & Status Plug. Bond
Blanket Bond #1253688
21B. Drilling Contractor
To be selected
22. Approx. Date Work will start
July 22, 1973

Table with 6 columns: SIZE OF HOLE, SIZE OF CASING, WEIGHT PER FOOT, SETTING DEPTH, SACKS OF CEMENT, EST. TOP. Rows include 26" hole, 17-1/2" casing, 94# weight, 750' setting depth, 980 sacks, Surface.

The pump and plug process will be used in cementing all strings of casing. The 20", 13-3/8", and 9-5/8" casing will be cemented to surface. The 7-3/4" and 5" liners will be cemented from top to bottom setting depths. Perforating and testing of possible pay zones will be determined by Electric Logs.

Blow out preventer program: Two 600 20" preventers with hydrill to drill 17-1/2" hole to 13-3/8" casing point, then three 14" Series 1500 preventers with hydrill to drill 12-1/4" hole to 9-5/8" casing point, then three 11" 10,000# preventers with hydrill to drill to TD.

The drilling fluid will be brine water with sufficient gell to condition the hole and running casing.

IN ABOVE SPACE DESCRIBE PROPOSED PROGRAM: IF PROPOSAL IS TO DEEPEN OR PLUG BACK, GIVE DATA ON PRESENT PRODUCTION AND PROPOSED NEW PRODUCTION.

I hereby certify that the information above is true and complete to the best of my knowledge and belief.
Signed (Signed) C. J. LOVE C. J. Love Title District Production Manager
EXPIRES 10-13-73
Date July 10, 1973

APPROVED BY W. A. Gressett OIL AND GAS INSPECTOR
DATE JUL 13 1973
CONDITIONS OF APPROVAL, IF ANY:

**MEXICO OIL CONSERVATION COMMISSION
WELL LOCATION AND ACREAGE DEDICATION PLAT**

Form C-102
Supersedes C-128
Effective 1-1-65

All distances must be from the outer boundaries of the Section.

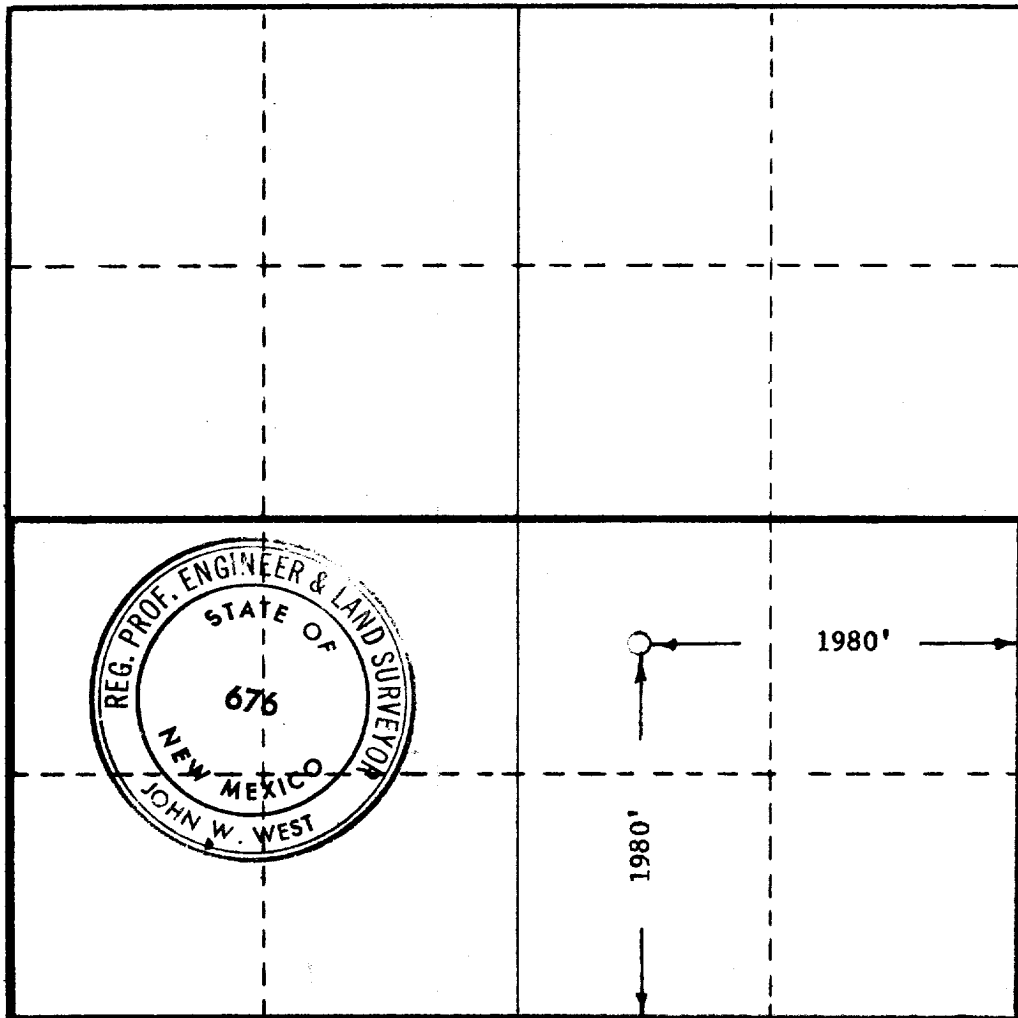
Operator SKELLY OIL COMPANY			Lease Forty-Niner FORTYNINER RIDGE <i>16</i>		Well No. 1
Unit Letter J	Section 16	Township 23 SOUTH	Range 30 EAST	County EDDY	
Actual Footage Location of Well: 1980 feet from the EAST line and 1980 feet from the SOUTH line					
Ground Level Elev. 3170.6'	Producing Formation Siluro-Devonian		Pool Wildcat	Dedicated Acreage: 320 Acres	

1. Outline the acreage dedicated to the subject well by colored pencil or hachure marks on the plat below.
2. If more than one lease is dedicated to the well, outline each and identify the ownership thereof (both as to working interest and royalty).
3. If more than one lease of different ownership is dedicated to the well, have the interests of all owners been consolidated by communitization, unitization, force-pooling, etc?

☐ Yes ☐ No If answer is "yes," type of consolidation _____

If answer is "no," list the owners and tract descriptions which have actually been consolidated. (Use reverse side of this form if necessary.) _____

No allowable will be assigned to the well until all interests have been consolidated (by communitization, unitization, forced-pooling, or otherwise) or until a non-standard unit, eliminating such interests, has been approved by the Commission.



CERTIFICATION

I hereby certify that the information contained herein is true and complete to the best of my knowledge and belief.

C. J. Love
 Name **C. J. Love**
 Position **Dist. Production Manager**
 Company **Skelly Oil Company**
 Date **July 10, 1973**

I hereby certify that the well location shown on this plat was plotted from field notes of actual surveys made by me or under my supervision, and that the same is true and correct to the best of my knowledge and belief.

Date Surveyed **JULY 3, 1973**
 Registered Professional Engineer and/or Land Surveyor
John W. West
 Certificate No. **676**