

RECEIVED

 Form C-102
 Supersedes C-128
 Effective 1-1-65

MEXICO OIL CONSERVATION COMMISSION

WELL LOCATION AND ACREAGE DEDICATION PLAT

AUG 25 1981

TEXACO Lse. No. 255210

Monument Area

All distances must be from the outer boundaries of the Section.

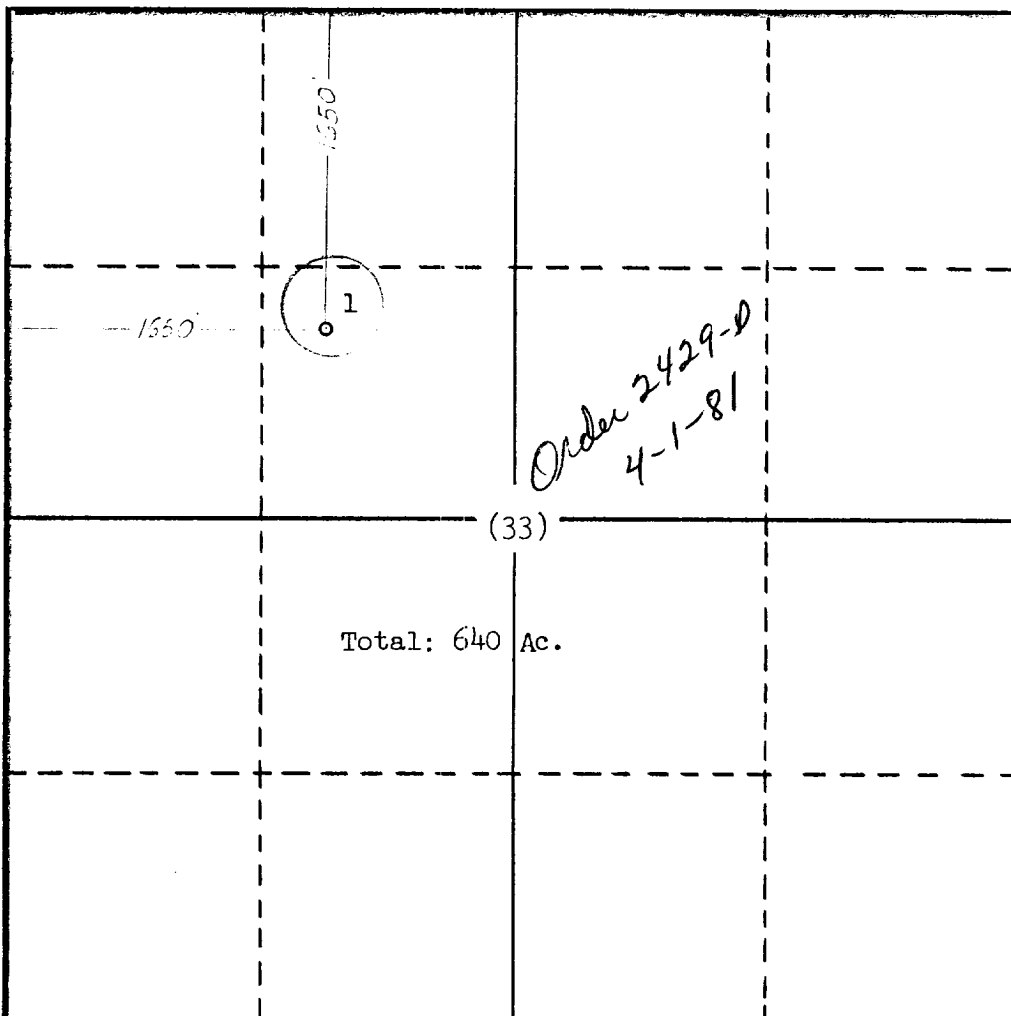
Operator TEXACO Inc.		Lease White City (COM)		O. C. D. ARTESIA, OFFICE		Well No. 1
Unit Letter F	Section 33	Township 24 - South	Range 26 - East	County Eddy		
Actual Footage Location of Well: 1650' feet from the North line and 1650' feet from the West line Sec. 33						
Ground Level Elev. 3365'	Producing Formation Morrow Clastic		Pool White City		Dedicated Acreage: 640 Acres	

1. Outline the acreage dedicated to the subject well by colored pencil or hachure marks on the plat below.
2. If more than one lease is dedicated to the well, outline each and identify the ownership thereof (both as to working interest and royalty).
TD ; 11,582'
3. If more than one lease of different ownership is dedicated to the well, have the interests of all owners been consolidated by communitization, unitization, force-pooling, etc?

☒ Yes ☐ No If answer is "yes," type of consolidation Communitization

If answer is "no," list the owners and tract descriptions which have actually been consolidated. (Use reverse side of this form if necessary.)

No allowable will be assigned to the well until all interests have been consolidated (by communitization, unitization, forced-pooling, or otherwise) or until a non-standard unit, eliminating such interests, has been approved by the Commission.



CERTIFICATION

I hereby certify that the information contained herein is true and complete to the best of my knowledge and belief.

Name E. L. Eiland

Position Division Surveyor

Company TEXACO Inc.

Date 8-21-81

I hereby certify that the well location shown on this plat was plotted from field notes of actual surveys made by me or under my supervision, and that the same is true and correct to the best of my knowledge and belief.

Date Surveyed

Registered Professional Engineer and/or Land Surveyor

Certificate No.

