

NEW MEXICO OIL CONSERVATION COMMISSION
WELL LOCATION AND ACREAGE DEDICATION PLAT

Copy 1
Form C-102
Supersedes C-128
Effective 1-1-65

All distances must be from the outer boundaries of the Section

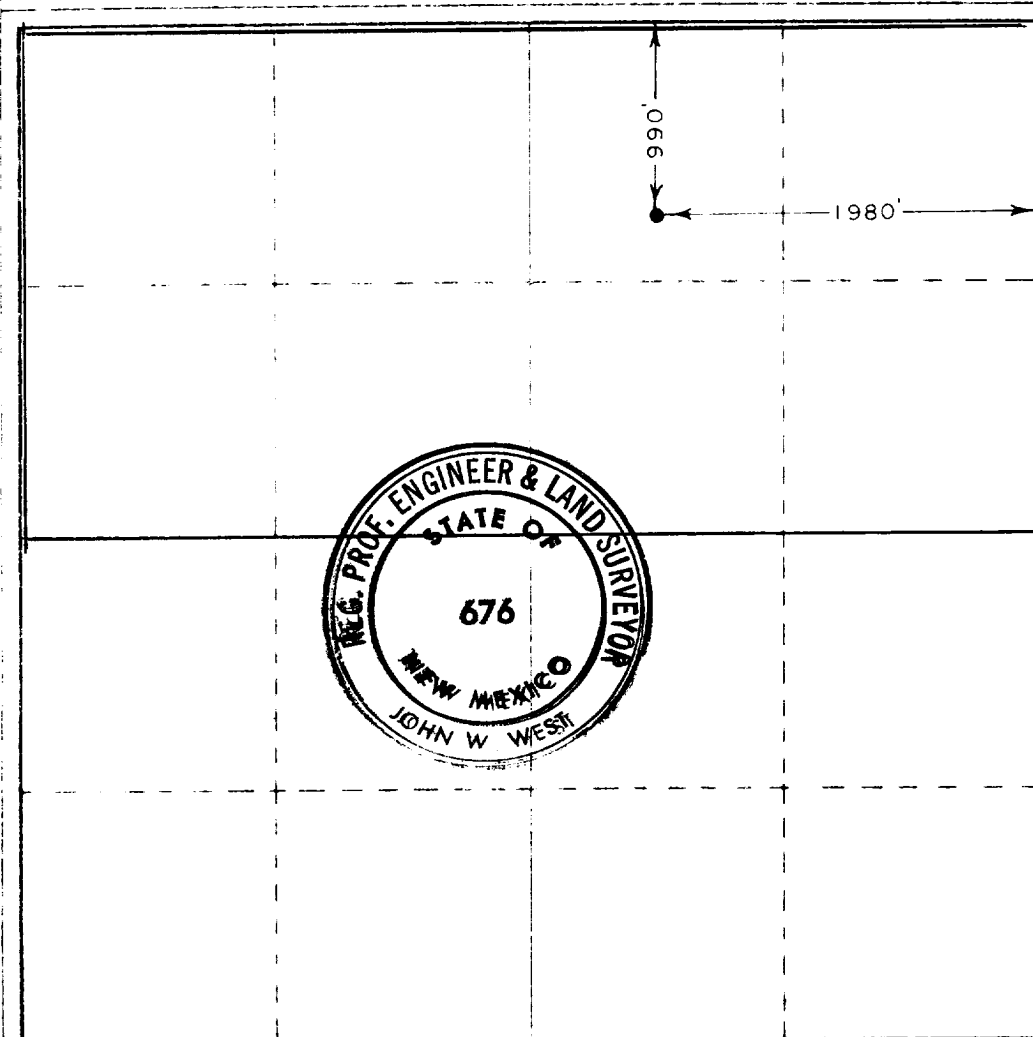
Operator MORRIS R. ANTWEIL			Lease SAIK		Well No. 1
Tract Letter B	Section 17	Township 22 SOUTH	Range 27 EAST	County EDDY	
Actual Well Location of Well: 990 feet from the NORTH line and 1980 feet from the EAST line					
Ground Level Elev 3122.0	Producing Formation Strawn	Pool Undesignated Strawn		Dedicated Acreage 320	

- Outline the acreage dedicated to the subject well by colored pencil or hatchure marks on the plat below.
- If more than one lease is dedicated to the well, outline each and identify the ownership thereof (both as to working interest and royalty). **Acreage consists of some 150 leases of various ownership.**
- If more than one lease of different ownership is dedicated to the well, have the interests of all owners been consolidated by communitization, unitization, force-pooling, etc?

☒ Yes ☐ No If answer is "yes," type of consolidation **Force-pooling Order No. R-4668**

If answer is "no," list the owners and tract descriptions which have actually been consolidated. (Use reverse side of this form if necessary)

No allowable will be assigned to the well until all interests have been consolidated (by communitization, unitization, forced-pooling, or otherwise) or until a non-standard unit, eliminating such interests, has been approved by the Commission.



JAN 3 - 1975

CERTIFICATION
D.E.C.

ARTESIA, OFFICE

I hereby certify that the information contained herein is true and complete to the best of my knowledge and belief

R M Williams

Name

R. M. Williams

Position

Agent

Company

Morris R. Antweil

Date

2 January, 1975

I hereby certify that the well location shown on this plat was plotted from field notes of actual surveys made by me or under my supervision, and that the same is true and correct to the best of my knowledge and belief.

Date Surveyed

SEPTEMBER 6, 1973

Registered Professional Engineer and/or Land Surveyor

John W West

Certificate No.

676

330 660 990 1320 1650 1980 2310 2640 2970 3300 3630 3960 4290 4620 4950 5280 5610 5940 6270 6600