

UNITED STATES
DEPARTMENT OF THE INTERIOR
GEOLOGICAL SURVEY

30-015-21051

APPLICATION FOR PERMIT TO DRILL, DEEPEN, OR PLUG BACK

1. TYPE OF WORK

DRILL ☒DEEPEN ☐PLUG BACK ☐

b. TYPE OF WELL

OIL
WELL ☐GAS
WELL ☒

OTHER

SINGLE
ZONE ☐MULTIPLE
ZONE ☒

2. NAME OF OPERATOR

Mobil Oil Corporation ✓

RECEIVED

3. ADDRESS OF OPERATOR

P. O. Box 633, Midland, Texas

DEC 21 1973

4. LOCATION OF WELL (Report location clearly and in accordance with any State requirements.)

At surface

550' FSL & 1980' FWL, Sec. 24, T-23-S, R-26-E

At proposed prod. zone

Same as Surface

O. C. C.
ARTESIA, OFFICE

14. DISTANCE IN MILES AND DIRECTION FROM NEAREST TOWN OR POST OFFICE*

15. DISTANCE FROM PROPOSED*
LOCATION TO NEAREST
PROPERTY OR LEASE LINE, FT.
(Also to nearest grig. well line, if any)

16. NO. OF ACRES IN LEASE

320

17. NO. OF ACRES ASSIGNED
TO THIS WELL

320

18. DISTANCE FROM PROPOSED LOCATION*
TO NEAREST WELL, DRILLING, COMPLETED,
OR APPLIED FOR, ON THIS LEASE, FT.

19. PROPOSED DEPTH

12,100'

20. ROTARY OR CABLE TOOLS

Rotary

21. ELEVATIONS (Show whether DF, RT, GR, etc.)

3234' GR

22. APPROX. DATE WORK WILL START*

As soon as possible

23.

PROPOSED CASING AND CEMENTING PROGRAM

SIZE OF HOLE	SIZE OF CASING	WEIGHT PER FOOT	SETTING DEPTH	QUANTITY OF CEMENT
17-1/2"	13-3/8"	48# - H-40	350	(1) Circulate to surface
12-1/4"	9-5/8"	40# - S-95	5550	(2) Circulate to surface
9-2/4"	5-1/2"	26# - S-95	12,100	(3) Circulate to 5350'

CEMENTING PROGRAM:

- (1) Class H Cement with 2% CaCl₂
- (2) Lite-Wate 13.1 #/gal) containing 7-1/2% salt/sx & tail in with Class C Neat
- (3) Lite-Wate Slurry (12.4 #/gal & tail in with Class H Neat using retarder

BLOWOUT PREVENTER & MUD PROGRAMS ATTACHED

RECEIVED

DEC 11 1973

U. S. GEOLOGICAL SURVEY
ARTESIA, NEW MEXICO

IN ABOVE SPACE DESCRIBE PROPOSED PROGRAM: If proposal is to deepen or plug back, give data on present productive zone and proposed new productive zone. If proposal is to drill or deepen directionally, give pertinent data on subsurface locations and measured and true vertical depths. Give blowout preventer program, if any.

24.

SIGNED

J. H. Seerey

TITLE

Associate Engineer

DATE

December 10, 1973

(This space for Federal or State office use)

PERMIT NO.

APPROVAL DATE

DEC 20 1973

APPROVED BY

TITLE

DISTRICT ENGINEER

DATE

CONDITIONS OF APPROVAL, IF ANY:

SUBJECT TO ATTACHED DEEP WELL CONTROL

REQUIREMENTS DATED 6-22-73

THIS APPROVAL IS RESCINDED IF OPERATIONS
ARE NOT COMMENCED WITHIN 3 MONTHS.

*See Instructions On Reverse Side

N. MEXICO OIL CONSERVATION COMMISS.
WELL LOCATION AND ACREAGE DEDICATION PLAT

Form C-102
Supersedes C-128
Effective 1-1-65

All distances must be from the outer boundaries of the Section.

Operator Mobil Oil Corporation		Lease Federal RR Com		Well No. 1
Unit Letter N	Section 24	Township 23-S	Range 26-E	County Eddy
Actual Footage Location of Well:				
660'		feet from the South	line and 1980'	feet from the West
Ground Level Elev. 3237'	Producing Formation Atoka & Morrow		Pool Undesignated	Dedicated Acreage: 320 Acres

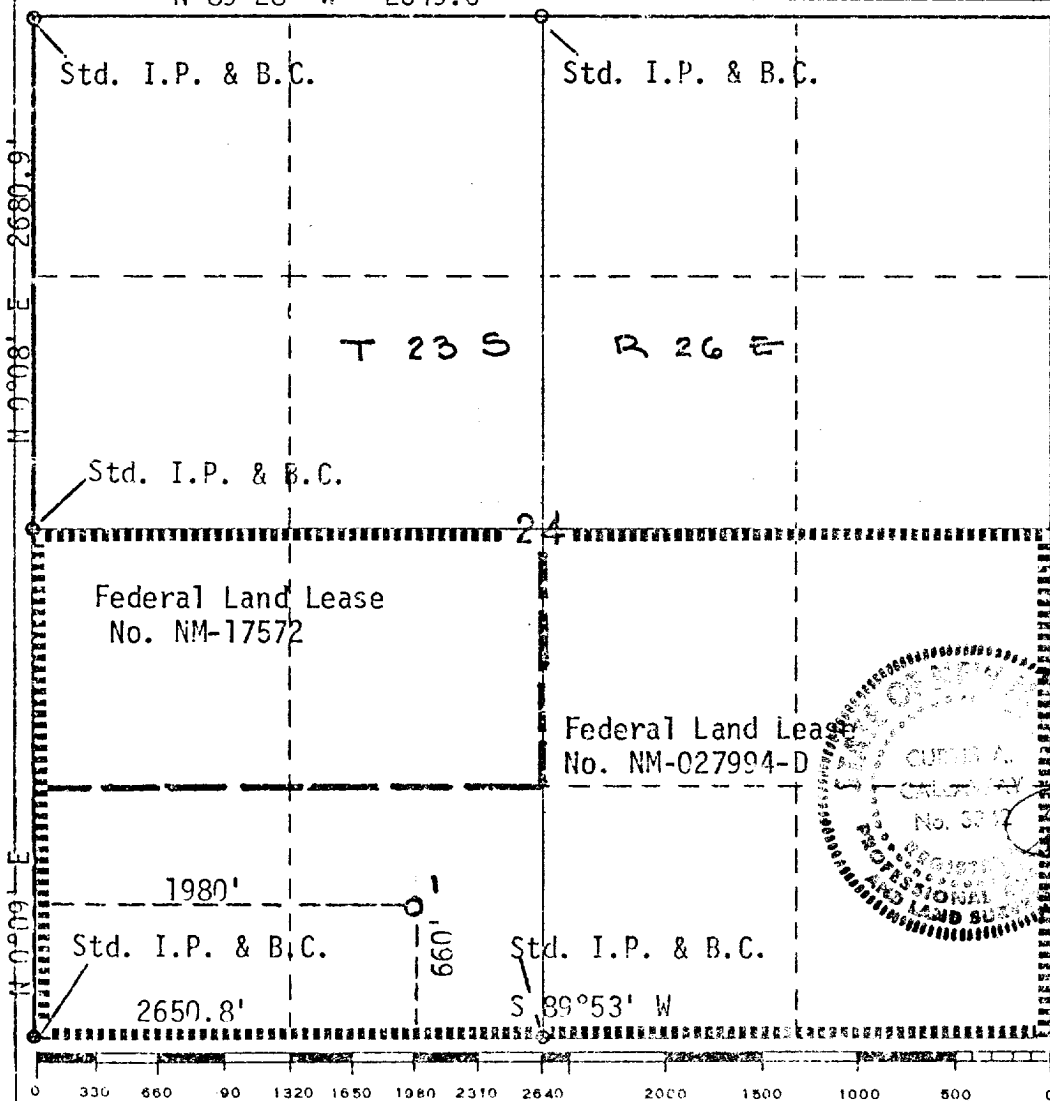
1. Outline the acreage dedicated to the subject well by colored pencil or hachure marks on the plat below.
2. If more than one lease is dedicated to the well, outline each and identify the ownership thereof (both as to working interest and royalty).
3. If more than one lease of different ownership is dedicated to the well, have the interests of all owners been consolidated by communitization, unitization, force-pooling, etc?

☒ Yes ☐ No If answer is "yes," type of consolidation Communitization

If answer is "no," list the owners and tract descriptions which have actually been consolidated. (Use reverse side of this form if necessary.)

No allowable will be assigned to the well until all interests have been consolidated (by communitization, unitization, forced-pooling, or otherwise) or until a non-standard unit, eliminating such interests, has been approved by the Commission.

N 89°28' W - 2649.6'



CERTIFICATION

I hereby certify that the information contained herein is true and complete to the best of my knowledge and belief.

Name
J. H. Seerey
Position
Associate Engineer
Company
Mobil Oil Corporation
Date
December 12, 1973

I hereby certify that the well location shown on this plat was plotted from field notes of actual surveys made by me or under my supervision, and that the same is true and correct to the best of my knowledge and belief.

Curtis A. Callaway
Date Surveyed
December 10, 1973
Registered Professional Engineer and/or Land Surveyor

Curtis A. Callaway

Certificate No.
3342

N.L. MEXICO OIL CONSERVATION COMMISSION
WELL LOCATION AND ACREAGE DEDICATION PLAT

Form C-102
Supersedes C-128
Effective 1-1-65

All distances must be from the outer boundaries of the Section.

Operator Mobil Oil Corporation			Lease Federal RR Com		Well No. 1
Unit Letter N	Section 24	Township 23-S	Range 26-E	County Eddy	
Actual Footage Location of Well: <div style="display: flex; justify-content: space-between;"> 660' feet from the South line and 1980' feet from the West line </div>					
Ground Level Elev. 3234'	Producing Formation Atoka & Morrow	Pool Undesignated	Dedicated Acreage: 320 Acres		

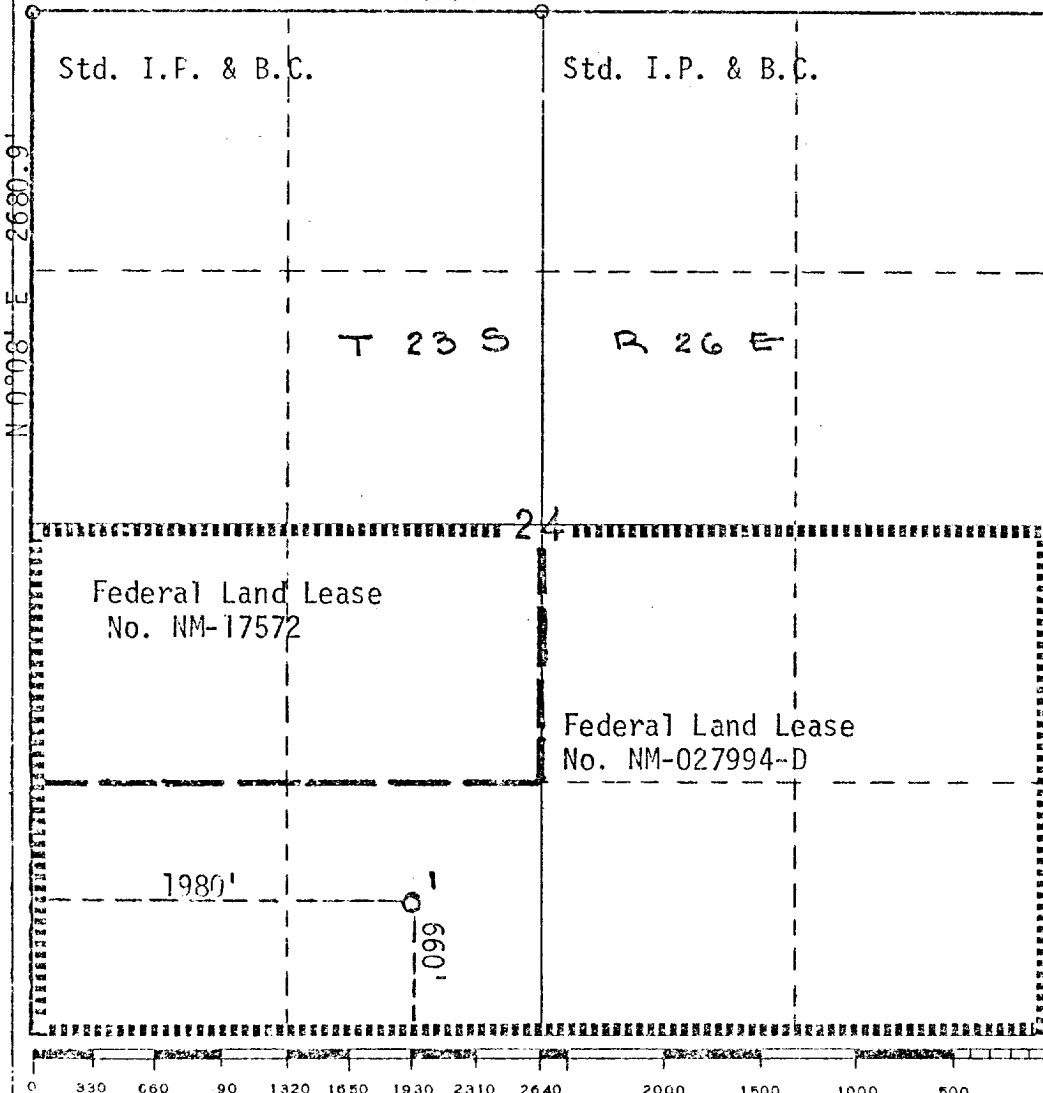
- Outline the acreage dedicated to the subject well by colored pencil or hatchure marks on the plat below.
- If more than one lease is dedicated to the well, outline each and identify the ownership thereof (both as to working interest and royalty).
- If more than one lease of different ownership is dedicated to the well, have the interests of all owners been consolidated by communitization, unitization, force-pooling, etc?

☒ Yes ☐ No If answer is "yes," type of consolidation Communitization

If answer is "no," list the owners and tract descriptions which have actually been consolidated. (Use reverse side of this form if necessary.) _____

No allowable will be assigned to the well until all interests have been consolidated (by communitization, unitization, forced-pooling, or otherwise) or until a non-standard unit, eliminating such interests, has been approved by the Commission.

N 89°28' W - 2649.6'



CERTIFICATION

I hereby certify that the information contained herein is true and complete to the best of my knowledge and belief.

Name J. H. Seerey
 Position Associate Engineer
 Company Mobil Oil Corporation
 Date December 10, 1973

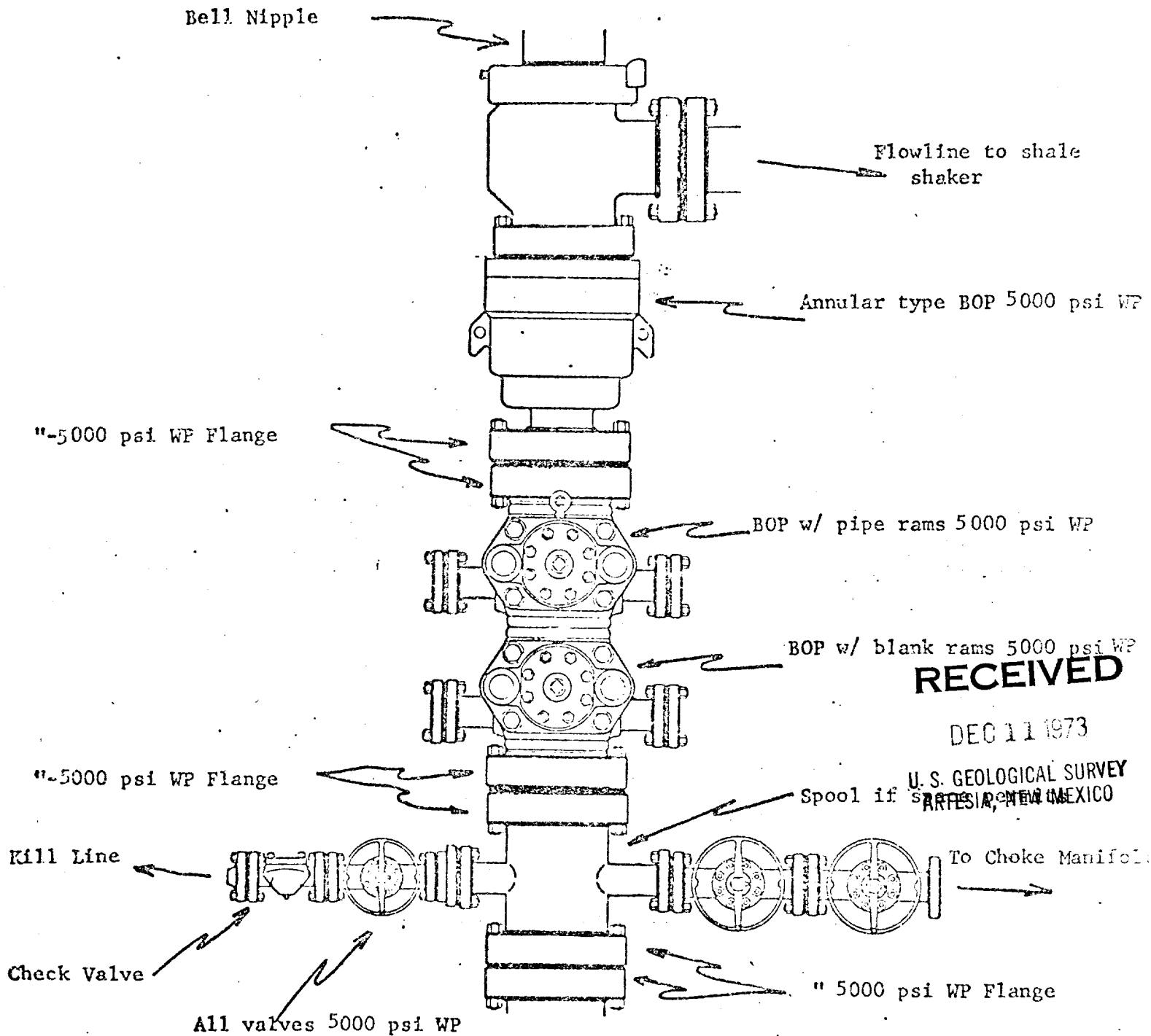
I hereby certify that the well location shown on this plat was plotted from field notes of actual surveys made by me or under my supervision, and that the same is true and correct to the best of my knowledge.

RECEIVED
DEC 11 1973
U.S. GEOLOGICAL SURVEY
ARTESIA, NEW MEXICO

Date Surveyed _____
 Registered Professional Engineer and/or Land Surveyor _____

Certificate No. _____

PROPOSED BOP STACK
9-5/8 " CASING

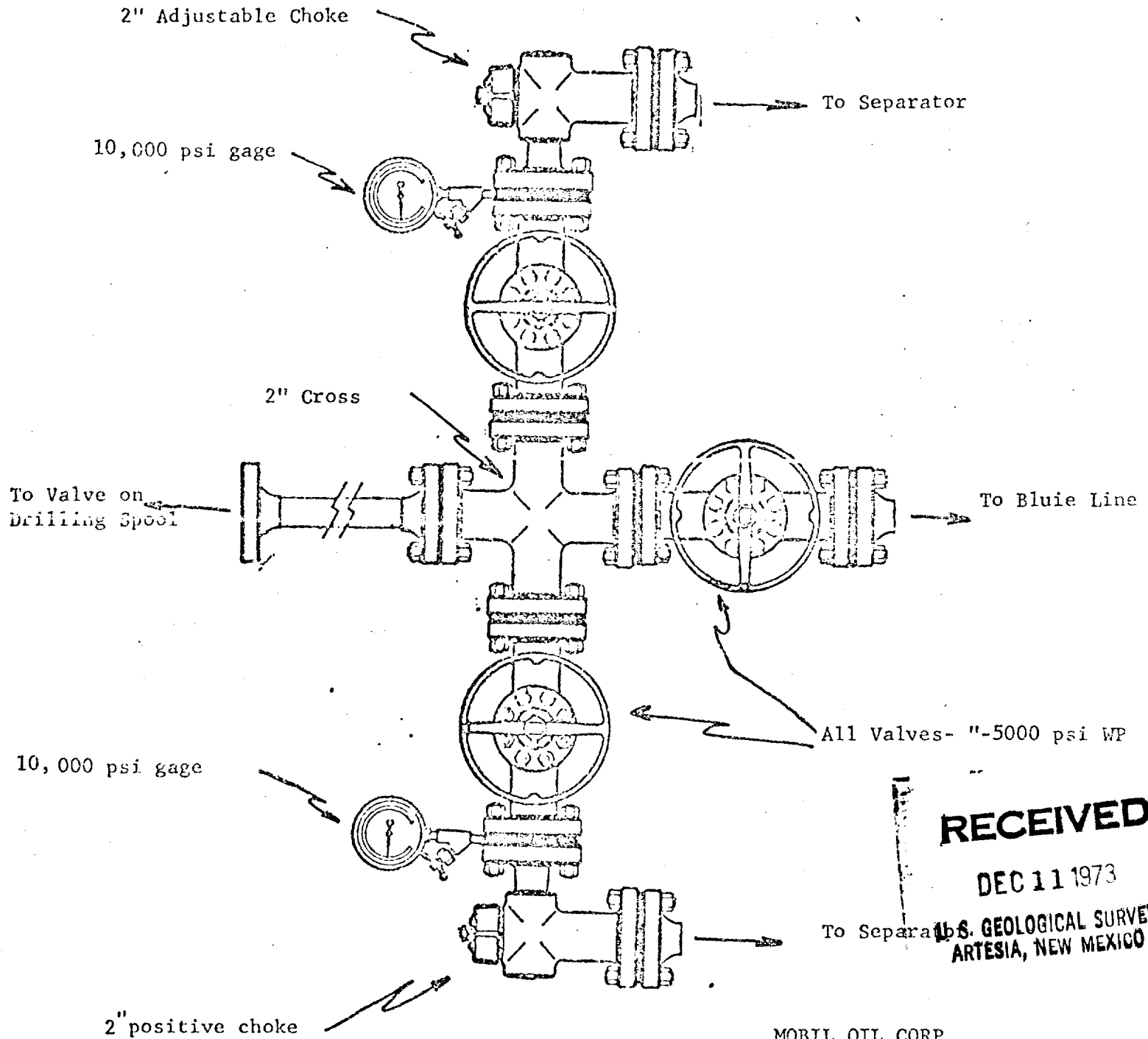


MOBIL OIL CORP.

WELL NAME & NO. Federal "RR" #1

Eddy COUNTY, New Mexico

PROPOSED CHOKES MANIFOLD
(MINIMUM REQUIREMENTS)
9-5/8 " CASING STRING



RECEIVED

DEC 11 1973

U.S. GEOLOGICAL SURVEY
ARTESIA, NEW MEXICO

MOBIL OIL CORP.
WELL NAME & NO. Federal "RR" #1

Eddy COUNTY, New Mexico

PROPOSED MUD PROGRAM
FOR
MOBIL OIL CORPORATION'S
FEDERAL RR COM, WELL #1
UNDESIGNATED POOL
EDDY COUNTY, NEW MEXICO

Depth, Ft.		<u>Type Mud</u>	<u>Weight</u>	<u>Viscosity</u>	<u>PH</u>	<u>Water Loss</u>
<u>From</u>	<u>To</u>					
0	350	Spud Mud	9-10	60-80	9+	NC
350	5550	Sat Brine	10+	30-38	9+	NC
5550	8800	Fresh Water	8.6-10	32-40	9+	NC
8800	TD	Br Water-Polymer	10-12	32-40	9+	15 cc or less

RECEIVED

DEC 11 1973

U. S. GEOLOGICAL SURVEY
ARTESIA, NEW MEXICO

MOBIL OIL CORPORATION
P. O. Box 633
Midland, Texas 79701

TWELVE-POINT SURFACE USE PLAN FOR
DRILLING OPERATIONS ON FEDERAL LEASES

Lease Name: Federal RR Com Well No. 1
Well Location: 660' FSL & 1980' FWL, Sec. 24, T-23-S, R-26-E
Field: Undesignated
County: Eddy State: New Mexico

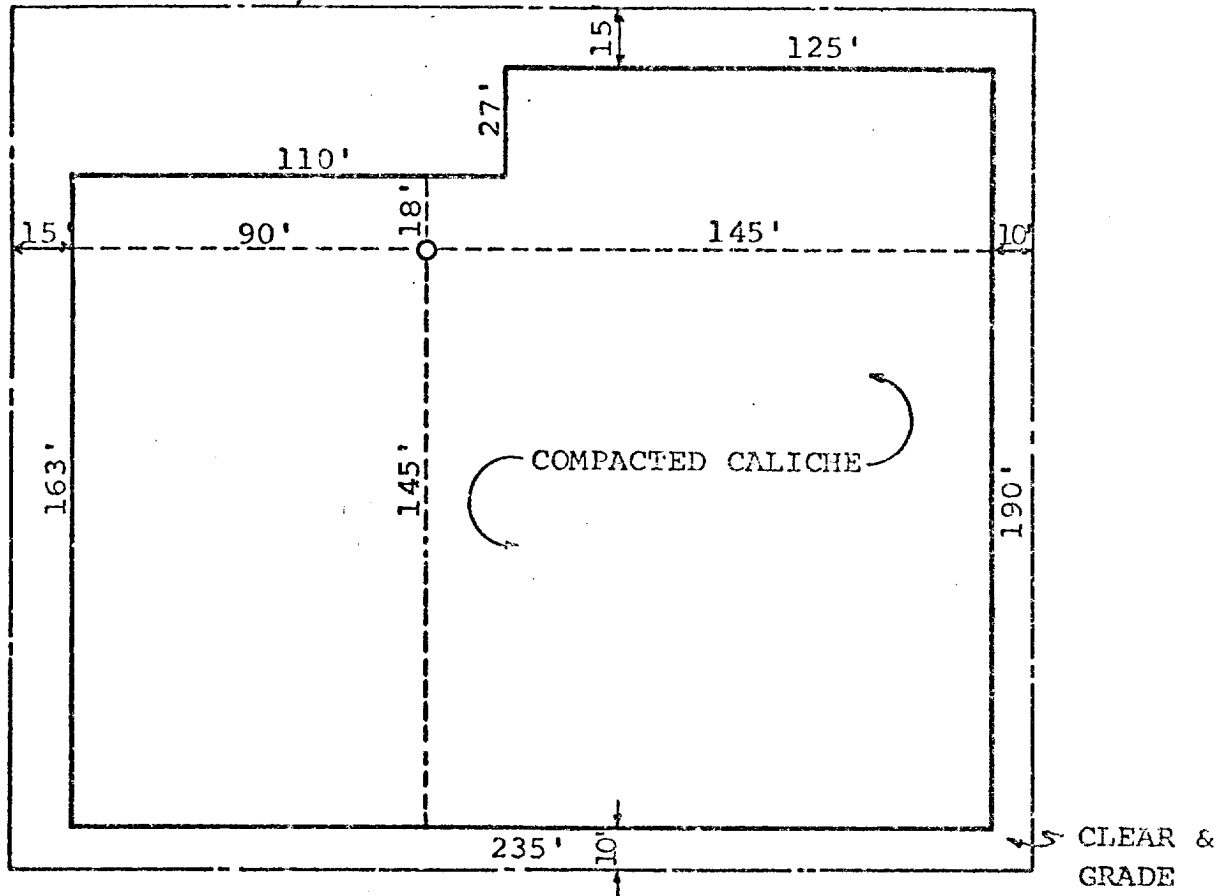
1. * Existing roads including location of the exit from the main highway.
2. * Planned access roads.
3. * Location of wells.
4. * Lateral roads to well location.
5. * Location of tank batteries and flow lines. Initial well on lease - Location of flow line will depend on market and sales contract.
6. Location and types of water supply: _____
_____ Water will be trucked into location.
7. Methods for handling waste disposal: Waste will be buried, burned and/or hauled from the drill site.
8. Location of camps: None
9. Location of air strips: None
10. Location layout to include position or rig, mud tanks, reserve pits, burn pits, pipe racks, etc.: See attached diagram of proposed layout.
11. Plans for restoration of the surface: Pits will be back-filled and leveled to original topography. Area restored to original grade and left for return of natural vegetation. The caliche pad will be left in place for well servicing.
12. Any other information that may be used in evaluating the impact on environment: This well is in a semi-arid region with rolling hills. The land is grass pasture and the soil is fine sandy loam.

RECEIVED

DEC 11 1973

U. S. GEOLOGICAL SURVEY
ARTESIA, NEW MEXICO

EDGE OF CLEARING



APPROXIMATELY 1158 C.Y. CALICHE
REQUIRED FOR 6" COMPACTED PAD.

RECEIVED

DEC 11 1973

U. S. GEOLOGICAL SURVEY
ARTESIA, NEW MEXICO
FEDERAL RR COM

NO.	DATE	BY	ALTERATION
STANDARD LOCATION PLAN 10,000'-15,000' DEEP WELLS ON STABLE SOIL			
MOBIL OIL CORPORATION			
DRAWN: DLT			DWG. NO.

THIS DRAWING AND ALL INFORMATION THEREON IS THE PROPERTY OF MOBIL OIL CORPORATION AND SHALL NOT BE COPIED OR USED EXCEPT FOR THE PURPOSE FOR WHICH

IT IS EXPRESSLY FORN. THE DRAWING AND ANY COPIES THEREOF (PARTIAL OR COMPLETE) SHALL BE RETURNED TO THE OWNER ON DEMAND

CONTINUED

