

N. MEXICO OIL CONSERVATION COMMISSION
WELL LOCATION AND ACREAGE DEDICATION PLAT

Form C-102
Supersedes C-128
Effective 1-1-65

All distances must be from the outer boundaries of the Section.

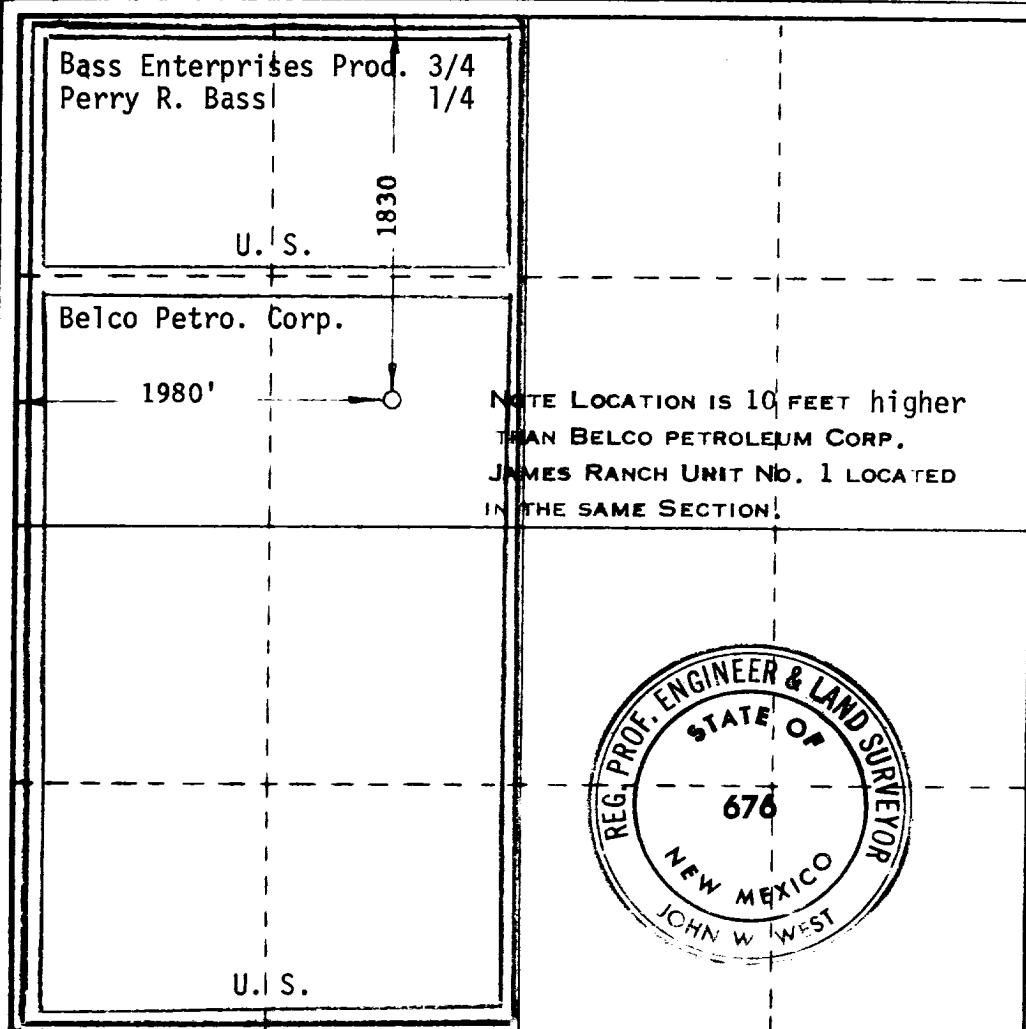
Operator BELCO PETROLEUM CORPORATION			Lease HUDSON FEDERAL		Well No. 1
Unit Letter F	Section 1	Township 23 SOUTH	Range 30 EAST	County EDDY	
Actual Footage Location of Well: 1830 feet from the NORTH line and 1980 feet from the WEST line					
Ground Level Elev. 3298.4' GR	Producing Formation		Pool		Dedicated Acreage: Acres

1. Outline the acreage dedicated to the subject well by colored pencil or hatchure marks on the plat below.
2. If more than one lease is dedicated to the well, outline each and identify the ownership thereof (both as to working interest and royalty).
3. If more than one lease of different ownership is dedicated to the well, have the interests of all owners been consolidated by communization, unitization, force-pooling, etc?

☐ Yes ☒ No If answer is "yes," type of consolidation Will be communized.

If answer is "no," list the owners and tract descriptions which have actually been consolidated. (Use reverse side of this form if necessary.)

No allowable will be assigned to the well until all interests have been consolidated (by communization, unitization, forced-pooling, or otherwise) or until a non-standard unit, eliminating such interests, has been approved by the Commission.



CERTIFICATION

I hereby certify that the information contained herein is true and complete to the best of my knowledge and belief.

Allen J. Channing

Name
District Engineer

Position
Belco Petroleum Corporation

Date
2/22/74

Date

RECEIVED

FEB 27 1974

U.S. GEOLOGICAL SURVEY
ARTESIA, NEW MEXICO
RECEIVED
FEB 25 1974
U.S. GEOLOGICAL SURVEY
ARTESIA, NEW MEXICO

Date Surveyed

AUGUST 9, 1973

Registered Professional Engineer
and/or Land Surveyor

John W. West

Certificate No.

676