

NEW MEXICO OIL CONSERVATION COMMISSION  
WELL LOCATION AND ACREAGE DEDICATION PLAT

Copy 6515  
Form C-162  
Supersedes C-128  
Effective 1-1-65

All distances must be from the outer boundaries of the Section.

Operator Mobil Oil Corporation			Lease Maude Rickman Com		Well No. 1
Unit Letter L	Section 3	Township 23-S	Range 27-E	County Eddy	
Actual Footage Location of Well: 2203.7 feet from the South line and 839.7 feet from the West line					
Ground Level Elev. 3113	Producing Formation Morrow	Pool Undesignated	Dedicated Acreage: 320 Acres		

1. Outline the acreage dedicated to the subject well by colored pencil or hachure marks on the plat below.
2. If more than one lease is dedicated to the well, outline each and identify the ownership thereof (both as to working interest and royalty).
3. If more than one lease of different ownership is dedicated to the well, have the interests of all owners been consolidated by communitization, unitization, force-pooling, etc?

RECEIVED

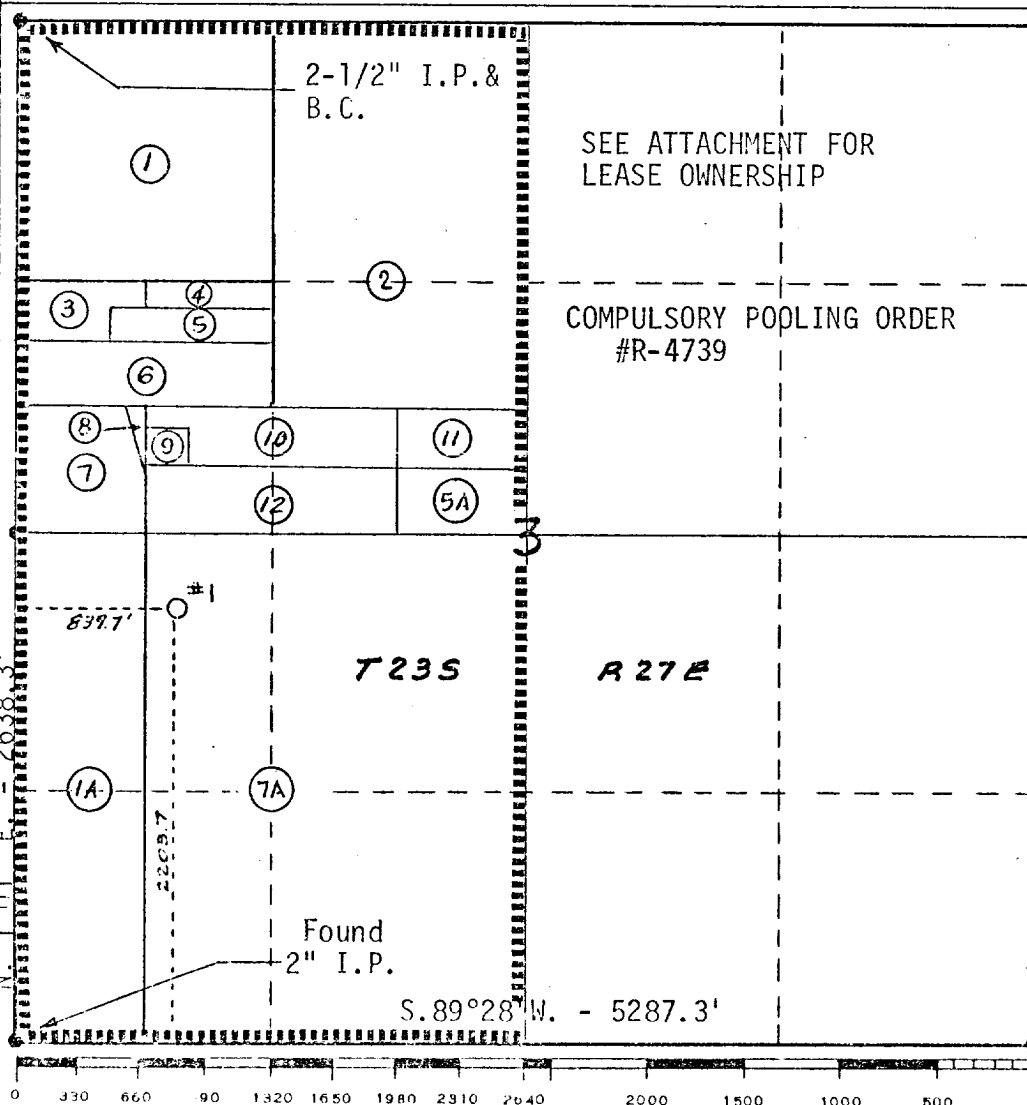
APR 8 1974

O. C. C.  
ARTESIA, OFFICE

☒ Yes ☐ No If answer is "yes," type of consolidation Communitization Pending

If answer is "no," list the owners and tract descriptions which have actually been consolidated. (Use reverse side of this form if necessary.)

No allowable will be assigned to the well until all interests have been consolidated (by communitization, unitization, forced-pooling, or otherwise) or until a non-standard unit, eliminating such interests, has been approved by the Commission.



CERTIFICATION

I hereby certify that the information contained herein is true and complete to the best of my knowledge and belief.

*A. D. Bond*

Name

A. D. Bond

Position

Proration Staff Assistant

Company

Mobil Oil Corporation

Date

April 4, 1974

I hereby certify that the well location shown on this plat was plotted from field notes of actual surveys made by me or under my supervision, and that the same is true and correct to the best of my knowledge and belief.

Date Surveyed

December 12, 1973

Registered Professional Engineer and/or Land Surveyor

Curtis A. Callaway

Certificate No.

3342

ATTACHMENT TO FORM C-102

MAUDE RICKMAN COM, WELL #1  
 SEC. 3, T-23-S, R-27-E  
 UNDESIGNATED (MORROW) POOL  
 EDDY COUNTY, NEW MEXICO  
 COMPULSORY POOLING #R-4739

LEASES TO BE DEDICATED TO THE WELL

Tract No. (Lease)	Ownership		Lease Acreage
	Royalty Interest	Working Interest	
1	Pecos Irrigation Co.	Mobil Oil Corp.	40.0
1-A	"	"	40.0
2	Eliza Gomez	Mobil Oil Corp.	60
3	Pedro Fierro	Mobil Oil Corp.	4.2
4	Eliza Gomez	Mobil Oil Corp.	2.3
5	Jose Subia	Mobil Oil Corp.	3.5
5-A	"	"	5.0
6	Marcelino B. Lopez	Mobil Oil Corp.	10.0
7	Maude G. Rickman	"	9.0
7-A	"	"	120.0
8	Heirs of Romolo Gomez,etal Unleased		1.0
9	Ysmael S. Gomez	Mobil Oil Corp.	1.0
10	Senon Gomez	Mobil Oil Corp.	9.0
11	V. M. Carrasco	"	5.0
12	Enrique P. Gomez	Mobil Oil Corp.	10.0