

NEW MEXICO OIL CONSERVATION COMMISSION
WELL LOCATION AND ACREAGE DEDICATION PLAT

Form C-102
Supersedes C-128
Effective 1-1-65

All distances must be from the outer boundaries of the Section

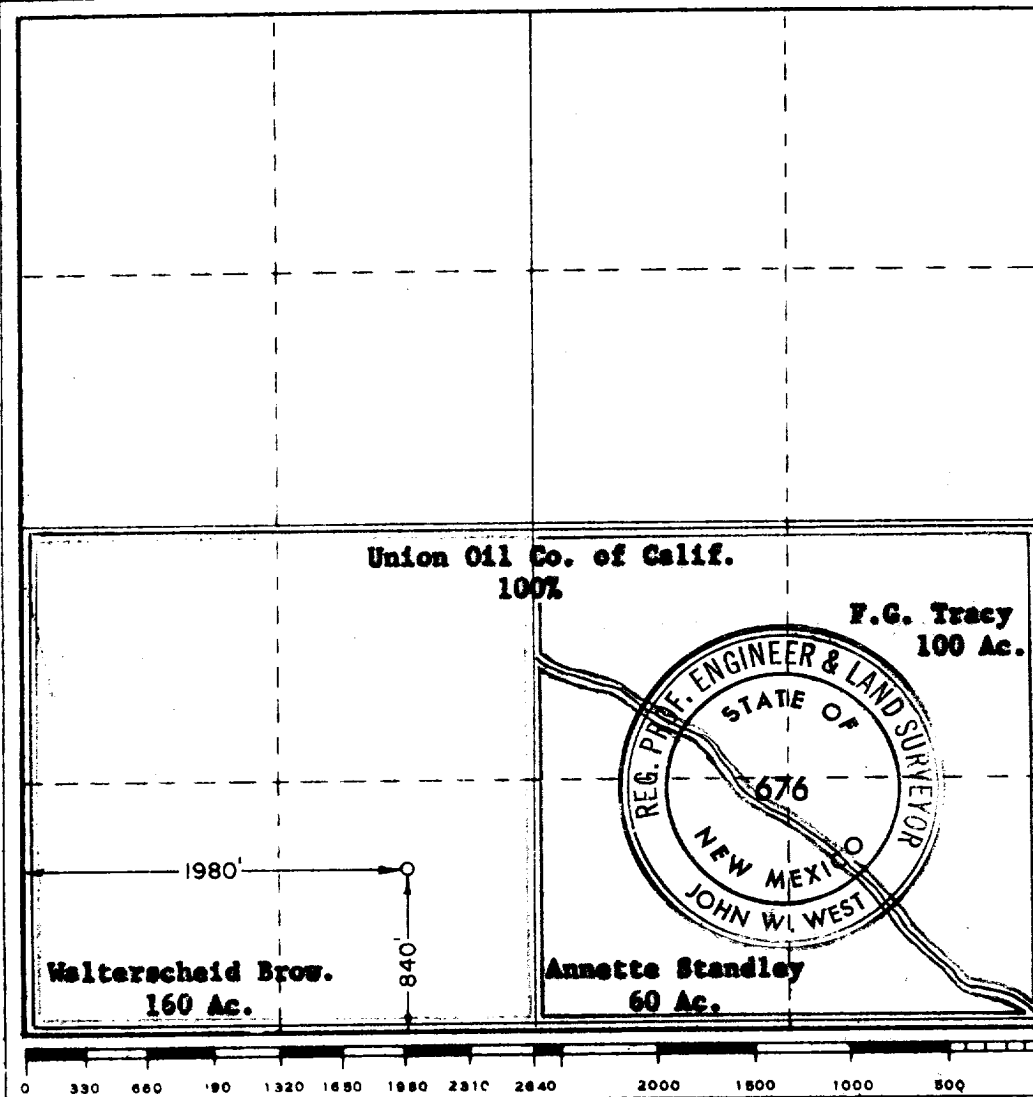
Operator UNION OIL COMPANY OF CALIFORNIA		Lease WALTERSCHEID WALTERSCHEID <i>Com</i>		Well No. 1
Unit Letter N	Section 10	Township 22 SOUTH	Range 27 EAST	County EDDY
Actual Footage Location of Well: 1980 feet from the WEST line and 840 feet from the SOUTH line				
Ground Level Elev. 3072.5	Producing Formation Morrow	Pool Undesignated Morrow Gas	Dedicated Acreage: 320 Acres	

1. Outline the acreage dedicated to the subject well by colored pencil or hachure marks on the plat below.
2. If more than one lease is dedicated to the well, outline each and identify the ownership thereof (both as to working interest and royalty).
3. If more than one lease of different ownership is dedicated to the well, have the interests of all owners been consolidated by communitization, unitization, force-pooling, etc?

☒ Yes ☐ No If answer is "yes," type of consolidation **Dedication by Royalty**

If answer is "no," list the owners and tract descriptions which have actually been consolidated. (Use reverse side of this form if necessary.) _____

No allowable will be assigned to the well until all interests have been consolidated (by communitization, unitization, forced-pooling, or otherwise) or until a non-standard unit, eliminating such interests, has been approved by the Commission.



CERTIFICATION

I hereby certify that the information contained herein is true and complete to the best of my knowledge and belief.

T. G. Byron
Name

T. G. Byron

Position

Dist. Drilling Supt.

Company

Union Oil Company of Calif.

Date

February 22, 1974

I hereby certify that the well location shown on this plat was plotted from field notes of actual surveys made by me or under my supervision, and that the same is true and correct to the best of my knowledge and belief.

Date Surveyed

February 19, 1974

Registered Professional Engineer and/or Land Surveyor

John W. West
Certificate No. **676**

RECEIVED

FEB 27 1974

O.C.C.
ARTESIA, OFFICE