

NEW MEXICO OIL CONSERVATION COMMISSION
WELL LOCATION AND ACREAGE DEDICATION PLAT

Form C-102
Supersedes C-128
Effective 1-1-65

All distances must be from the outer boundaries of the Section

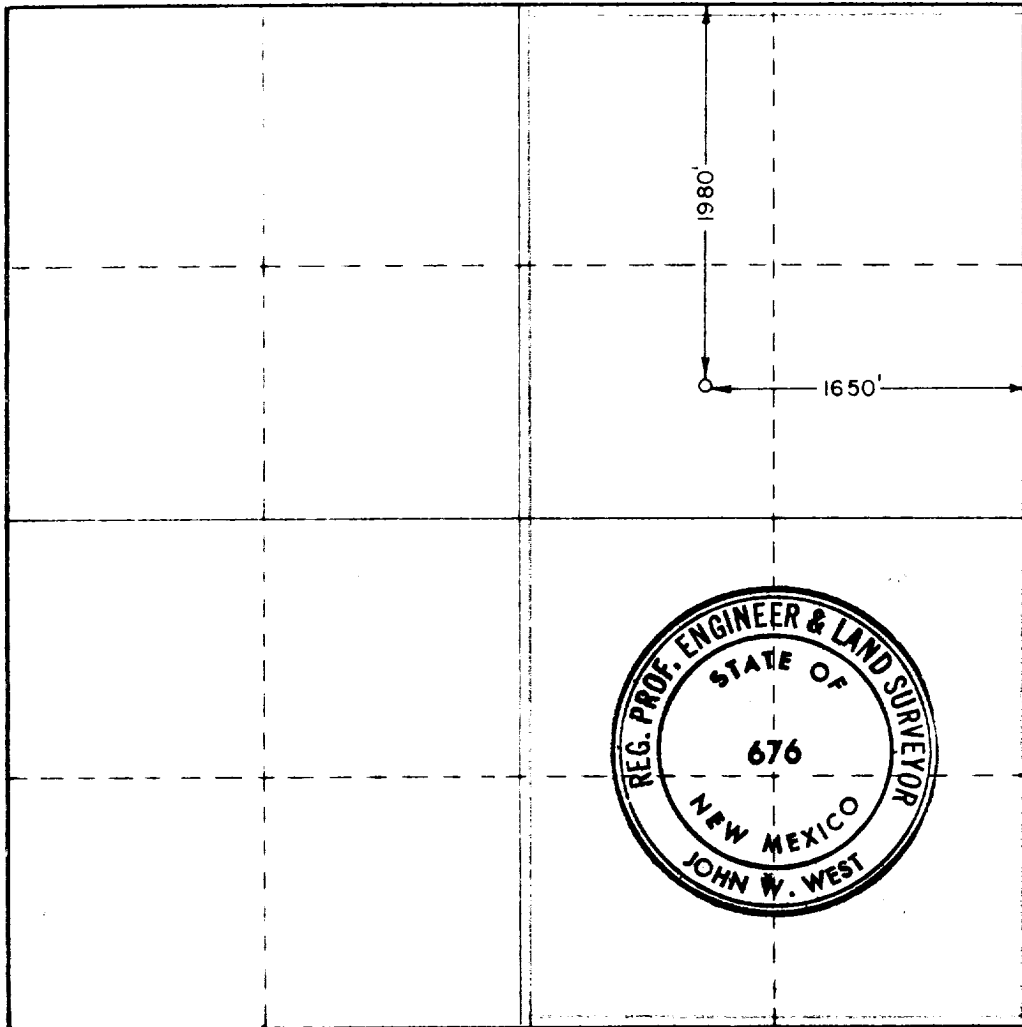
Operator CHAPARRAL PRODUCTION, INC.		Lease WOOD CANYON UNIT		Well No. 1
Tract Letter G	Section 24	Township 24 SOUTH	Range 25 EAST	County EDDY
Actual Footage Location of Well: 1980 feet from the NORTH line and 1650 feet from the EAST line				
Ground Level Elev. 3863.0	Producing Formation Morrow	Pool W.C.	Dedicated Acreage: 320 Acres	

1. Outline the acreage dedicated to the subject well by colored pencil or hachure marks on the plat below.
2. If more than one lease is dedicated to the well, outline each and identify the ownership thereof (both as to working interest and royalty).
3. If more than one lease of different ownership is dedicated to the well, have the interests of all owners been consolidated by communitization, unitization, force-pooling, etc?

☒ Yes No If answer is "yes," type of consolidation Federal Unit

If answer is "no," list the owners and tract descriptions which have actually been consolidated. (Use reverse side of this form if necessary.) _____

No allowable will be assigned to the well until all interests have been consolidated (by communitization, unitization, forced-pooling, or otherwise) or until a non-standard unit, eliminating such interests, has been approved by the Commission.



CERTIFICATION

I hereby certify that the information contained herein is true and complete to the best of my knowledge and belief.

Name Frank J. Danner
Position Engineer
Company Chaparral Production Inc.
Date March 8, 1974

I hereby certify that the information shown on this plat was plotted from field notes of actual surveys made by me or under my supervision, and that the same is true and correct to the best of my knowledge and belief.

RECEIVED
MAR 11 1974
U. S. GEOLOGICAL SURVEY
ARTESIA, NEW MEXICO

Date Surveyed JANUARY 25, 1974
Registered Professional Engineer and/or Land Surveyor John W. West
Certificate No. 676

