

NE EXICO OIL CONSERVATION COMMISSIC
WELL LOCATION AND ACREAGE DEDICATION PLAT

Form C-102
Supersedes C-128
Effective 1-1-65

All distances must be from the outer boundaries of the Section.

Operator Mobil Oil Corporation		Lease State SS		Well No. 1
Unit Letter C	Section 20	Township 23-S	Range 27-E	County Eddy
Actual Postage Location of Well:				
660' feet from the North line and		1980' feet from the West line		
Ground Level Elev. 3179'	Producing Formation Morrow	Pool Undesignated	Dedicated Acreage: 320 Acres	

1. Outline the acreage dedicated to the subject well by colored pencil or hachure marks on the plat below.
2. If more than one lease is dedicated to the well, outline each and identify the ownership thereof (both as to working interest and royalty).
3. If more than one lease of different ownership is dedicated to the well, have the interests of all owners been consolidated by communitization, unitization, force-pooling, etc?

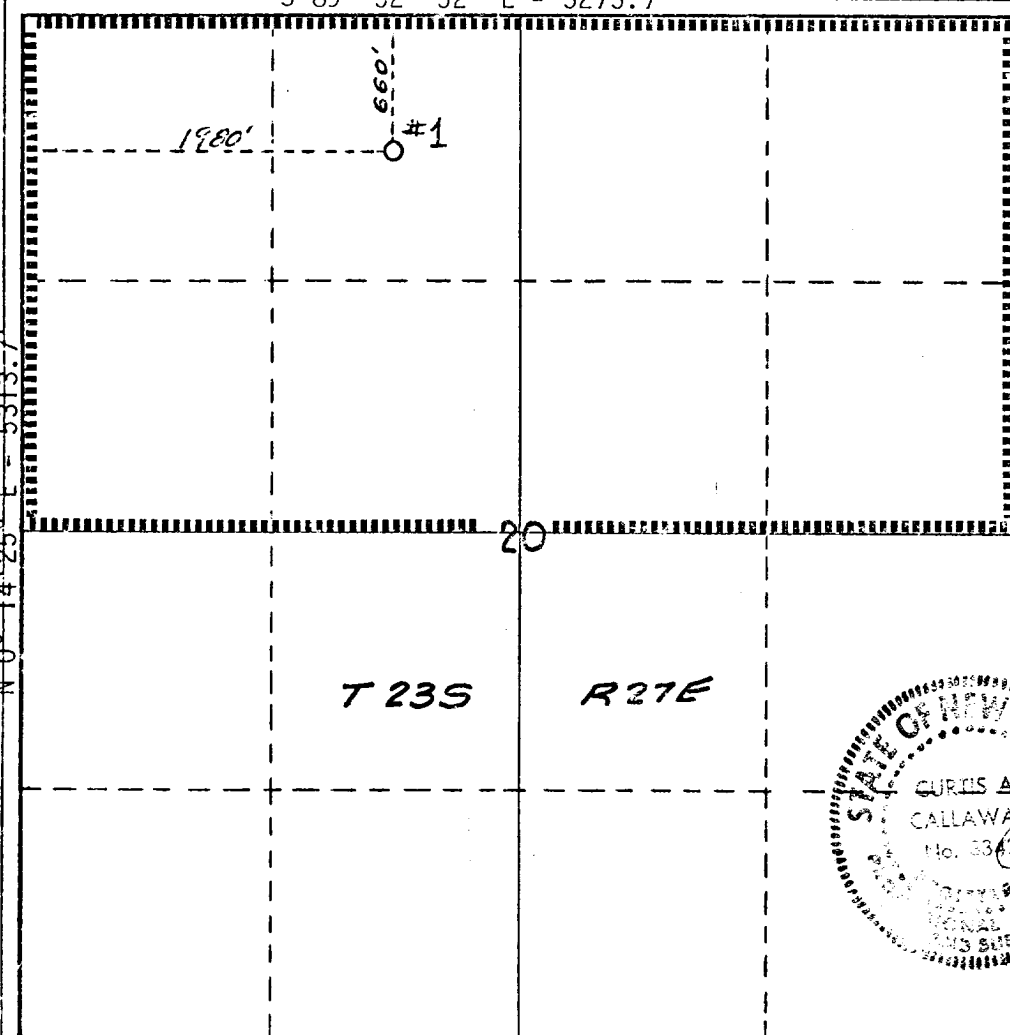
RECEIVED

MAY 8 1974

☐ Yes ☐ No If answer is "yes," type of consolidation O.C.C.
ARTESIA, OFFICE
If answer is "no," list the owners and tract descriptions which have actually been consolidated. (Use reverse side of this form if necessary.)

No allowable will be assigned to the well until all interests have been consolidated (by communitization, unitization, forced-pooling, or otherwise) or until a non-standard unit, eliminating such interests, has been approved by the Commission.

S 89° 52' 52" E - 5275.7'



CERTIFICATION

I hereby certify that the information contained herein is true and complete to the best of my knowledge and belief.

A. D. Bond

Name
A. D. Bond

Position
Proration Staff Assistant

Company
Mobil Oil Corporation

Date
May 7, 1974

I hereby certify that the well location shown on this plat was plotted from field notes of actual surveys made by me or under my supervision, and that the same are true and correct to the best of my knowledge and belief.

Curtis A. Callaway
Date Surveyed
May 6, 1974

Registered Professional Engineer
and/or Land Surveyor

Curtis A. Callaway

Certificate No.
3342

N 0° 14' 25" E - 5313.7'