

**NEW MEXICO OIL CONSERVATION COMMISSION
WELL LOCATION AND ACREAGE DEDICATION PLAT**

Form C-102
Supersedes C-128
Effective 12-65

All distances must be from the outer boundaries of the Section

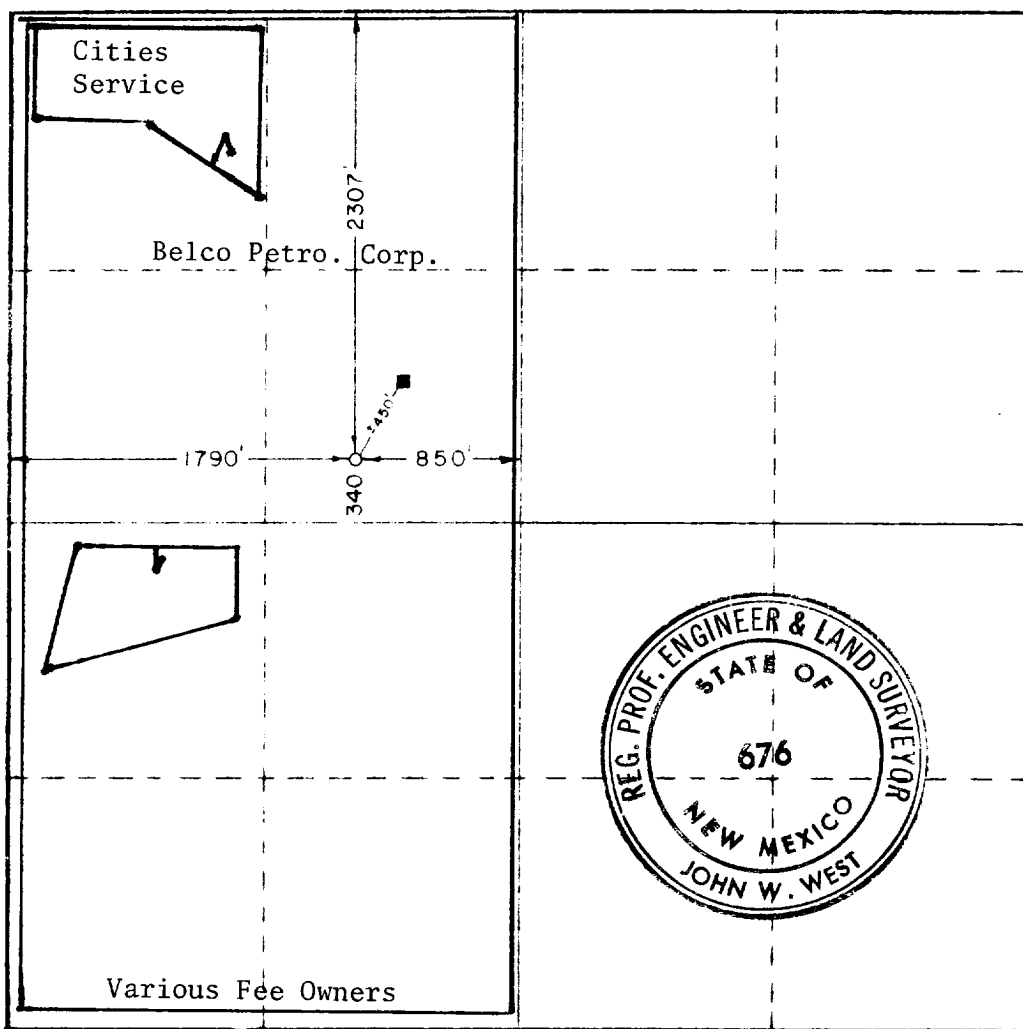
Operator BELCO PETROLEUM CORPORATION			Lease JOHN JOYCE COM		Well No. 1
Tract Letter F	Section 5	Township 22 SOUTH	Range 27 EAST	County EE EDDY	
Actual Footage Location of Well:					
1790 feet from the WEST line and		2307 feet from the NORTH line			
Ground Level Elev. 3162.4	Producing Formation <i>Manawa</i>	Pool <i>belco</i>	Dedicated Acreage 320.47		

1. Outline the acreage dedicated to the subject well by colored pencil or hachure marks on the plat below.
2. If more than one lease is dedicated to the well, outline each and identify the ownership thereof (both as to working interest and royalty).
3. If more than one lease of different ownership is dedicated to the well, have the interests of all owners been consolidated by communitization, unitization, force-pooling, etc?

☒ Yes ☐ No If answer is "yes," type of consolidation Pooling provisions at lease.

If answer is "no," list the owners and tract descriptions which have actually been consolidated (Use reverse side of this form if necessary) _____

No allowable will be assigned to the well until all interests have been consolidated (by communitization, unitization, forced-pooling, or otherwise) or until a non-standard unit, eliminating such interests, has been approved by the Commission.



CERTIFICATION

I hereby certify that the information contained herein is true and complete to the best of my knowledge and belief.

Allen J. Owings

Name
Allen J. Owings
Position
District Engineer
Company
Belco Petroleum Corporation

Date
June 6, 1974

I hereby certify that the well location shown on this plat was plotted from field notes of actual surveys made by me or under my supervision, and that the same is true and correct to the best of my knowledge and belief.

Date Surveyed
JUNE 5, 1974
Registered Professional Engineer and/or Land Surveyor

John W. West
Certificate No. **676**

