

UNITED STATES
DEPARTMENT OF THE INTERIOR
GEOLOGICAL SURVEY

30-015-21378

5. LEASE DESIGNATION AND SERIAL NO.

U.S.A. 0556916

6. IF INDIAN, ALLOTTEE OR TRIBE NAME

7. UNIT AGREEMENT NAME

Turkey Draw Unit

8. FARM OR LEASE NAME

9. WELL NO.

1

10. FIELD AND POOL, OR WILDCAT

Wildcat

11. SEC., T., R., M., OR BLK.
AND SURVEY OR AREA

Sec. 31-24S-22E, NMPM

12. COUNTY OR PARISH

Eddy

13. STATE

New Mexico

1a. TYPE OF WORK

DRILL ☒DEEPEN ☐PLUG BACK ☐

b. TYPE OF WELL

OIL WELL ☐GAS WELL ☒

OTHER

SINGLE ZONE ☒MULTIPLE ZONE ☐

2. NAME OF OPERATOR

FRANKLIN, ASTON & FAIR, INC.

3. ADDRESS OF OPERATOR

P. O. Box 1090, Roswell, New Mexico 88201

SEP 25 1974

4. LOCATION OF WELL (Report location clearly and in accordance with any State requirements.)*

At surface

1700' FNL & 2180' FEL, Sec. 31-24S-22E, N.M.D.M.C. (SW 1/4)

At proposed prod. zone

14. DISTANCE IN MILES AND DIRECTION FROM NEAREST TOWN OR POST OFFICE*

21 miles West of White City, New Mexico

15. DISTANCE FROM PROPOSED*

LOCATION TO NEAREST
PROPERTY OR LEASE LINE, FT.
(Also to nearest drlg. unit line, if any)

450 feet

16. NO. OF ACRES IN LEASE

320

17. NO. OF ACRES ASSIGNED
TO THIS WELL

320

18. DISTANCE FROM PROPOSED LOCATION*

TO NEAREST WELL, DRILLING, COMPLETED,
OR APPLIED FOR, ON THIS LEASE, FT.

19. PROPOSED DEPTH

7,500 feet

20. ROTARY OR CABLE TOOLS

Rotary

21. ELEVATIONS (Show whether DF, RT, GR, etc.)

5828.3 Ground Level

22. APPROX. DATE WORK WILL START*

On Approval

23.

PROPOSED CASING AND CEMENTING PROGRAM

SIZE OF HOLE	SIZE OF CASING	WEIGHT PER FOOT	SETTING DEPTH	QUANTITY OF CEMENT
17	13-3/8	42	500	500 circulated
11	8-5/8	24	1900	750
7-7/8	5-1/2	15.5	7500	500

It is proposed to drill this well to the estimated depth of 7,500 feet to test the Morrow sands. Surface and intermediate casing will be run as above and if production is indicated the 5-1/2" production casing will be set as above.

If well is non-productive the well will be plugged and abandoned as provided for in regulations.

In lieu of original application filed by William G. McCoy. Copies attached.

NSL-664
5-10-74

IN ABOVE SPACE DESCRIBE PROPOSED PROGRAM: If proposal is to deepen or plug back, give data on present productive zone and proposed new productive zone. If proposal is to drill or deepen directionally, give pertinent data on subsurface locations and measured and true vertical depths. Give blowout preventer program, if any.

24.

SIGNED

Grant M. Smith

TITLE

Geologist

DATE

9-3-74

(This space for Federal or State office use)

PERMIT NO.

SUBJECT TO ATTACHED DEEP WELL CONTRACT
APPROVAL DATE
REQUIREMENTS DATED
TITLE

JUN 22 1973

Subject to NM 010
Approval as UZ

DATE

APPROVED
SEP 12 1974
T. L. BEEKHOF
ACTING DISTRICT ENGINEER

THIS APPROVAL IS RESCINDED IF OPERATIONS
ARE NOT COMMENCED WITHIN 3 MONTHS.
EXPIRES DEC 24 1974

*See Instructions On Reverse Side

DECLARED WATER BASIN
C MENT... THE 13 3/4"
CASING MUST BE CIRCULATED

NOTIFY USGS IN SUFFICIENT TIME TO

WITNESS CEMENTING THE 13 3/4"

NEW MEXICO OIL CONSERVATION COMMISSION
WELL LOCATION AND ACREAGE DEDICATION PLAT

Form C-102
Supersedes C-128
Effective 1-1-65

All distances must be from the outer boundaries of the Section.

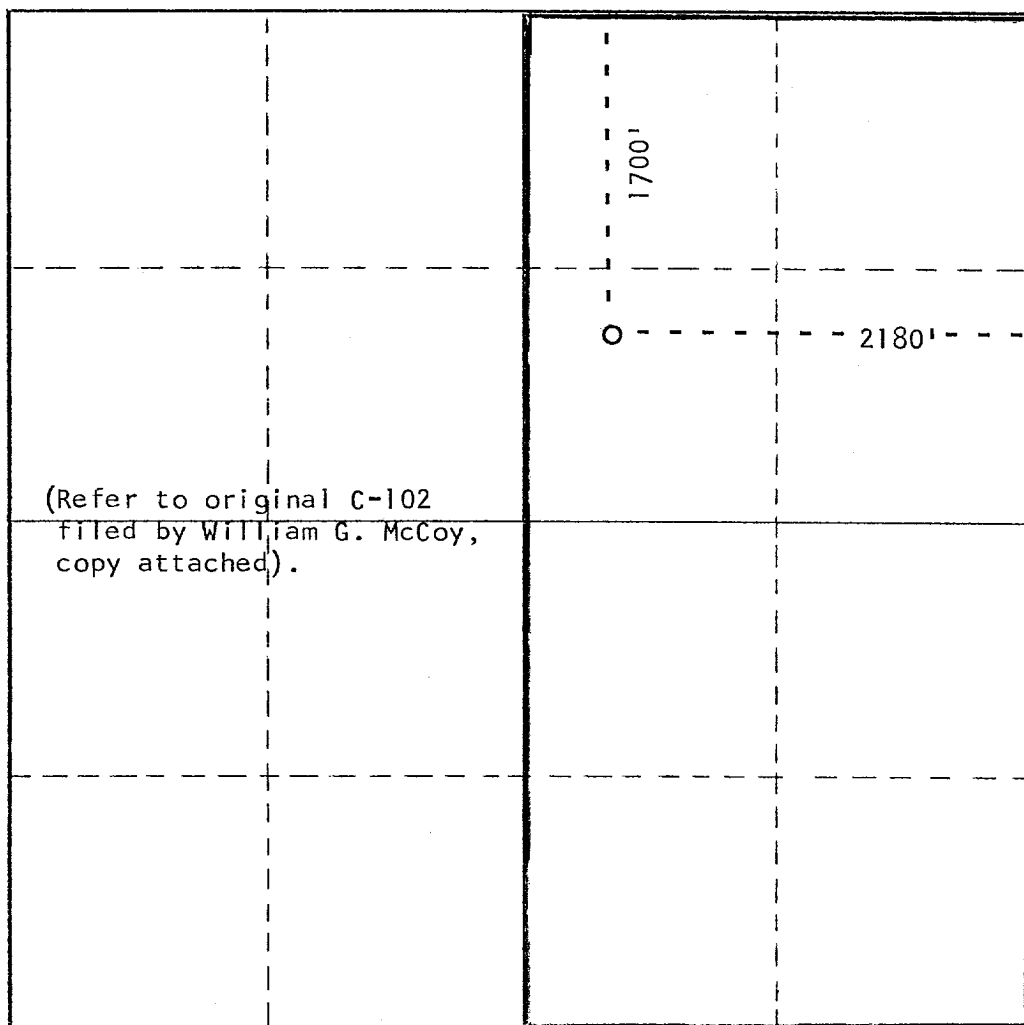
Operator FRANKLIN, ASTON & FAIR, INC.			Lease Turkey Draw Unit #1		Well No. 1
Unit Letter G	Section 31	Township 24 South	Range 22 East	County Eddy	
Actual Footage Location of Well: 1700 feet from the North line and 2180 feet from the East line					
Ground Level Elev. 5828.3	Producing Formation Morrow	Pool Wildcat		Dedicated Acreage: 320 Acres	

1. Outline the acreage dedicated to the subject well by colored pencil or hachure marks on the plat below.
2. If more than one lease is dedicated to the well, outline each and identify the ownership thereof (both as to working interest and royalty).
3. If more than one lease of different ownership is dedicated to the well, have the interests of all owners been consolidated by communitization, unitization, force-pooling, etc?

☐ Yes ☐ No If answer is "yes," type of consolidation _____

If answer is "no," list the owners and tract descriptions which have actually been consolidated. (Use reverse side of this form if necessary.) _____

No allowable will be assigned to the well until all interests have been consolidated (by communitization, unitization, forced-pooling, or otherwise) or until a non-standard unit, eliminating such interests, has been approved by the Commission.



CERTIFICATION

I hereby certify that the information contained herein is true and complete to the best of my knowledge and belief.

Name *Grant M. Smith*
Position **Geologist**
Company **Franklin, Aston & Fair, Inc.**

Date **September 4, 1974**

RECEIVED

I hereby certify that the well location shown on this plat was plotted from field notes of geological surveys made by me or under my supervision, and that the same is true and correct to the best of my knowledge and belief.

Date Surveyed **January 28, 1974**

Registered Professional Engineer and/or Land Surveyor

Certificate No.

676

UNITED STATES
DEPARTMENT OF THE INTERIOR
GEOLOGICAL SURVEY

APPLICATION FOR PERMIT TO DRILL, DEEPEN, OR PLUG BACK

1a. TYPE OF WORK

DRILL ☒DEEPEN ☐PLUG BACK ☐

b. TYPE OF WELL

OIL
WELL ☐GAS
WELL ☒

OTHER

SINGLE
ZONE ☒MULTIPLE
ZONE ☐

2. NAME OF OPERATOR

WILLIAM G. McCOY

3. ADDRESS OF OPERATOR

P.O. BOX 1352 ROSWELL, NM 88201

4. LOCATION OF WELL (Report location clearly and in accordance with any State requirements.)*

At surface

1700' FNL & 2180' FEL, Sec. 31, 24S, 22E, NMPM (SW $\frac{1}{4}$ NE $\frac{1}{4}$)

At proposed prod. zone

14. DISTANCE IN MILES AND DIRECTION FROM NEAREST TOWN OR POST OFFICE*

21 miles West of White City, NM

15. DISTANCE FROM PROPOSED*

LOCATION TO NEAREST
PROPERTY OR LEASE LINE, FT.
(Also to nearest drilg. unit line, if any)

450 ft.

16. NO. OF ACRES IN LEASE

320

17. NO. OF ACRES ASSIGNED
TO THIS WELL

320

18. DISTANCE FROM PROPOSED LOCATION*

TO NEAREST WELL, DRILLING, COMPLETED,
OR APPLIED FOR, ON THIS LEASE, FT.

19. PROPOSED DEPTH

7500 ft.

20. ROTARY OR CABLE TOOLS

Rotary

21. ELEVATIONS (Show whether DF, RT, GR, etc.)

5828.3 Ground Level

22. APPROX. DATE WORK WILL START*

On Approval

23.

PROPOSED CASING AND CEMENTING PROGRAM

SIZE OF HOLE	SIZE OF CASING	WEIGHT PER FOOT	SETTING DEPTH	QUANTITY OF CEMENT
17	13-3/8	42	500	500 circulated
11	8-5/8	24	1900	750
7-7/8	5-1/2	15.5	7500	500

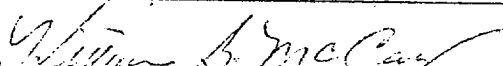
It is proposed to drill this well to the estimated depth of 7500 feet to test the Morrow sands. Surface and intermediate casing will be run as above and if production is indicated the 5-1/2" production casing will be set as above.

If well is non-productive the well will be plugged and abandoned as provided for in regulations.

IN ABOVE SPACE DESCRIBE PROPOSED PROGRAM: If proposal is to deepen or plug back, give data on present productive zone and proposed new productive zone. If proposal is to drill or deepen directionally, give pertinent data on subsurface locations and measured and true vertical depths. Give blowout preventer program, if any.

24.

SIGNED



TITLE Operator

DATE 4-29-74

(This space for Federal or State office use)

PERMIT NO.

APPROVAL DATE

APPROVED BY

TITLE

DATE

CONDITIONS OF APPROVAL, IF ANY:

*See Instructions On Reverse Side

RECEIVED
SEP 23 1974
U.S. GEOLOGICAL SURVEY
ARTESIA, NEW MEXICO

NEW MEXICO OIL CONSERVATION COMMISSION
WELL LOCATION AND ACREAGE DEDICATION PLAT

Form C-102
Supersedes C-128
Effective 1-4-65

All distances must be from the outer boundaries of the Section.

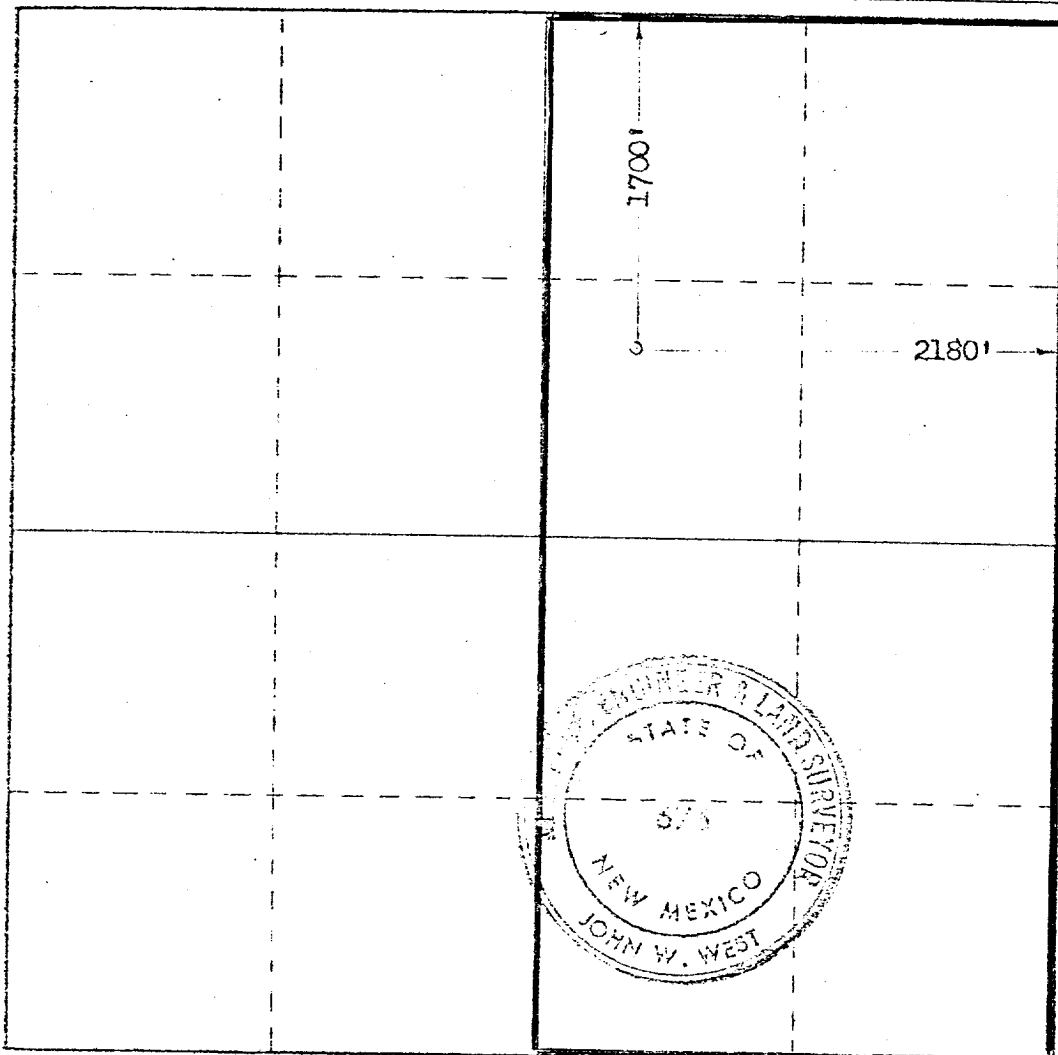
Operator WILLIAM G. MCCOY			Lease Federal 7-31		Well No. 1
Unit Letter G	Section 31	Township 24 South	Range 22 East	County Eddy	
Actual Footage Location of Well:					
1700 feet from the north line and		2180 feet from the east line			
Ground Level Elev. 5828.3	Producing Formation Morrow	Pool Wildcat	Dedicated Acreage 320 Acres		

- Outline the acreage dedicated to the subject well by colored pencil or hachure marks on the plat below.
- If more than one lease is dedicated to the well, outline each and identify the ownership thereof (both as to working interest and royalty).
- If more than one lease of different ownership is dedicated to the well, have the interests of all owners been consolidated by communitization, unitization, force-pooling, etc?

☐ Yes ☐ No If answer is "yes," type of consolidation _____

If answer is "no," list the owners and tract descriptions which have actually been consolidated. (Use reverse side of this form if necessary.) _____

No allowable will be assigned to the well until all interests have been consolidated (by communitization, unitization, forced-pooling, or otherwise) or until a non-standard unit, eliminating such interests, has been approved by the Commission.



CERTIFICATION

I hereby certify that the information contained herein is true and complete to the best of my knowledge and belief.

William G. McCoy
Name **William G. McCoy**

Position
Operator

Company

Date **April 29, 1974**

RECEIVED
SEP 23 1974

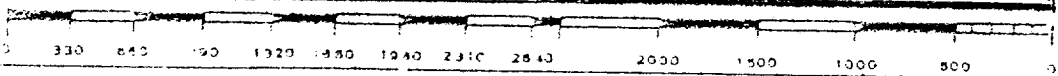
I hereby certify that the well location shown on this plat was obtained from field notes and surveys made by me or under my supervision and is true and correct to the best of my knowledge and belief.

Date Surveyed
Jan. 28, 1974

Registered Professional Engineer and/or Land Surveyor

John W. West

Certificate No. **676**



WILLIAM G. MCCOY
NO.1 HARTMAN FEDERAL
DRILLING MUD PROGRAM

SURFACE: 500 feet 13-3/8"

Spud and drill surface hole with air due to possible lost circulation problems. Prior to running surface casing, will pump 200 barrels of a slurry of Magcogel with 10 to 15 lbs/bbl loss circulation material into hole to help cushion casing and also help seal hole prior to cementing.

INTERMEDIATE: 1900 feet 8-5/8"

Drill out surface casing with fresh water while circulating through controlled section of the reserve pit. Maintain pH control with lime as needed. Prior to making trips, flush hole by mixing 5 or 6 sacks of Flosal rapidly in suction pit. In case of bad seepage or loss of returns, continue to dry drill. Prior to reaching casing point, raise viscosity to 34 to 36 sec. per quart to assure a clean hole for running casing. Use Flosal and salt water clay to raise viscosity.

PRODUCTION: 7500 feet 5-1/2"

Drill to 4500 feet with fresh water using lime for ph control. Mud up at 4500 feet with a low solids mud with the following characteristics:

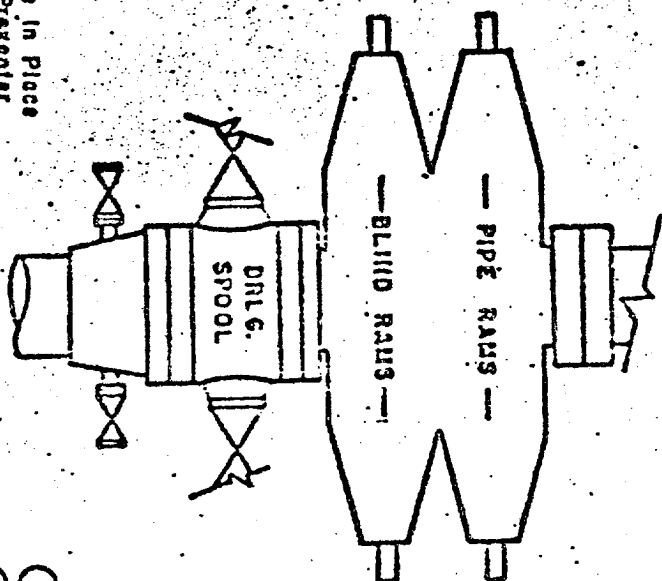
Weight:	8.6 to 9.2 lbs/gal
Viscosity:	34 to 36 sec./1000 cc.
Water Loss:	10 to 15 cc's
pH:	9.5 to 10

Continue to total depth with this mud with the exception of weight and viscosity which may need to be altered due to hole conditions.

SPECIAL PRODUCTION PRACTICES:

Mud Logging Unit at 4500 feet. Drill Stem Tests - 1 Cisco, 1 Strawn, 1 Morrow. Open Hole Logs at T.D.

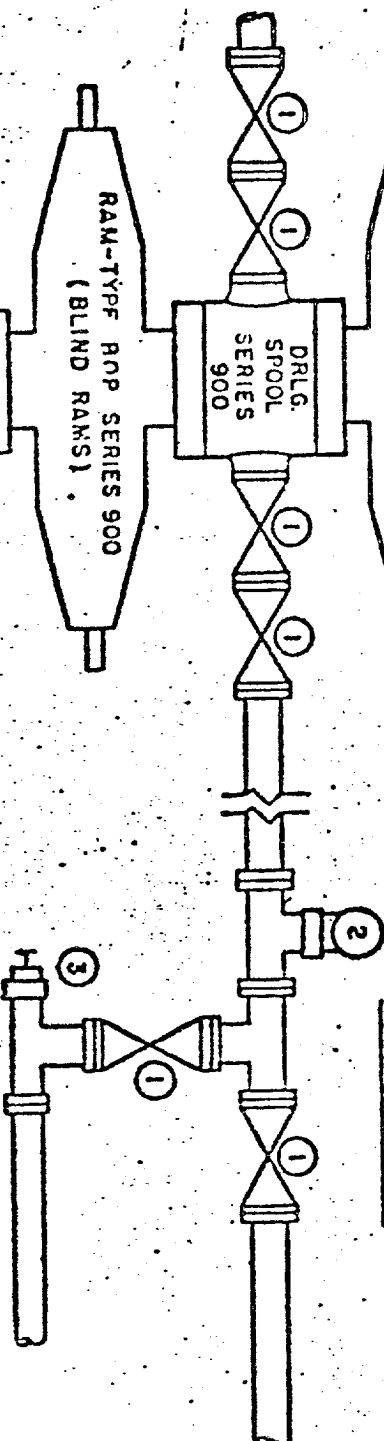
HOOKUP FOR DOUBLE PREVENTERS



Hydril GK Acceptable in Place
Of Upper Ram-Type Preventer

- ① 2" SERIES 900 VALVE
- ② 2" MUD PRESSURE GAUGE
- ③ 2" SERIES 900 CHOKE

CHOKE MANIFOLD



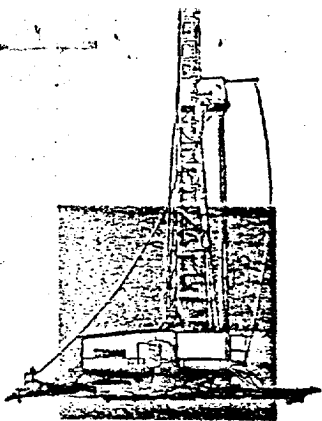
WILLIAM G. MCCOY

NO. 1 HARTMAN FEDERAL

3000 PSI WORKING PRESSURE

BLOWOUT PREVENTER HOOK-UP

(SERIES 900 FLANGES OR BETTER)



MORANCO

RIG 5

5000' - 11,000'

DRAWWORKS

Mid-Continent U-15. *Catheads*: Make-up, Kelco: Break-out, *Unit Drum*: 1 1/8" Lebus grooved. *Compound*: 2-engine oil bath chain drive. *Brake*: Hydromatic Parkersburg 15" quadruple.

ENGINES

Two 410-H.P. D353TA Caterpillar Diesel
Clutches: 20" Fawick

DRILLING MAST

Lee C. Moore, 127', 440,000# capacity.
Substructure: 10' x 20' x 48'

TRAVELING EQUIPMENT

Block: Ideco Shorty 250-ton.
Hook: Ideco 250-ton.
Swivel: National N-47 200-ton

MUD PUMPS

Pump No. 1: Emsco DB 550, 550-H.P. with steel fluid end. 4 3/4" - 7 3/4" liners, 16" stroke. Compound-driven.
Pump No. 2: National C-150, independently powered by one Waukesha NDR BU.

LIGHTING SYSTEM

Generators: Two 15 kw A.C. Kohler light plants powered by Waukesha 180 GKB.
Lighting: All lights fluorescent or mercury vapor. All vapor-proof.

DRILL PIPE

2500', 4 1/2" Grade E, 20#
Tool Joints: 4 1/2" H-90, 6 1/4 OD
8500', 4 1/2" Grade E, 16.60#
Tool Joints: 4" H-90, 6" OD

BLOWOUT PREVENTERS

One Shaffer LWS hydraulic double 10" x 900 series with Payne 4-valve accumulator closing unit. Manifold 4" x 900 series flanged connections. One Hydril 10" x 900 series.

DRILL COLLARS

Thirty Drilco spiral-grooved 6 1/2" OD, 2 1/4" ID. Three Drilco Square collars (6 3/4", 7 7/8", 8 3/4" OD's)

MUD PITS

Three 7' x 5' x 34' steel pits.
Shale Shaker: Link Belt double screen.

WATER STORAGE

Two 500-bbl. horizontal tanks.

HOUSING

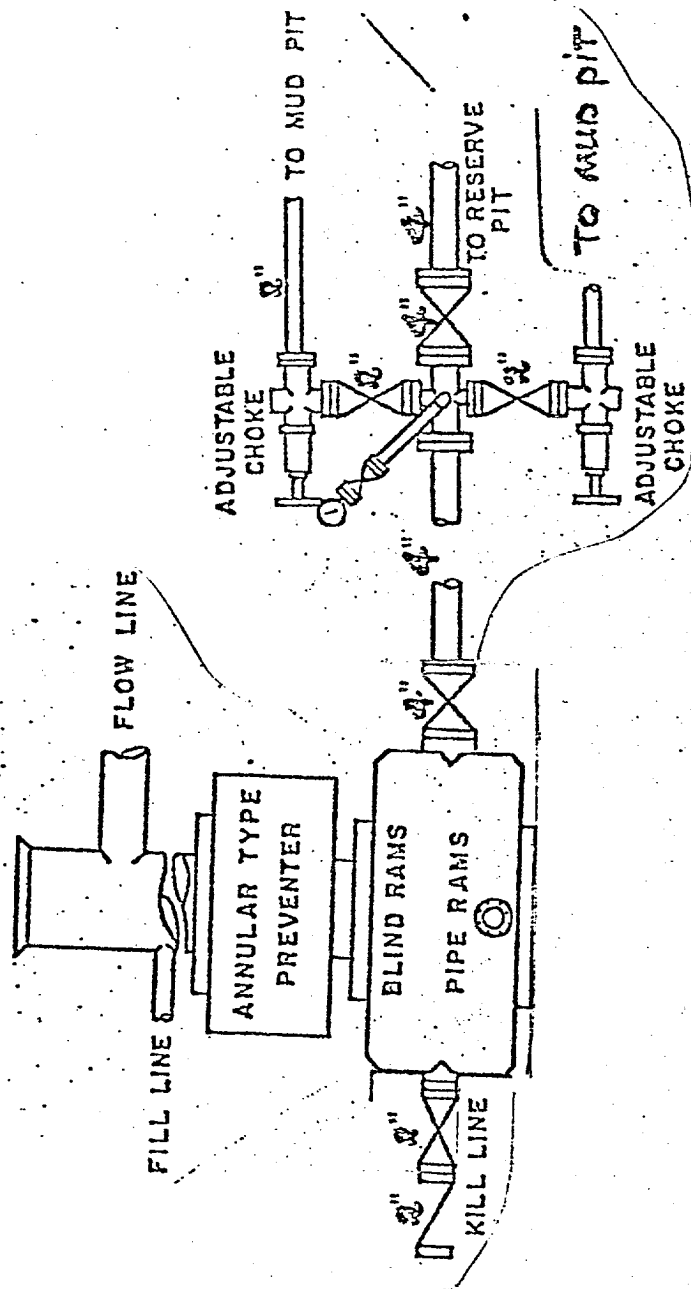
One 8' x 36' air conditioned trailer house with sleeping and cooking accommodations.

COMMUNICATIONS

24-hour direct telephone interconnect through Hobbs (397-5621) Midland-Odessa (563-0562)

RECEIVED
SEP 23 1974
U.S. GEOLOGICAL SURVEY
ARTESIA, NEW MEXICO



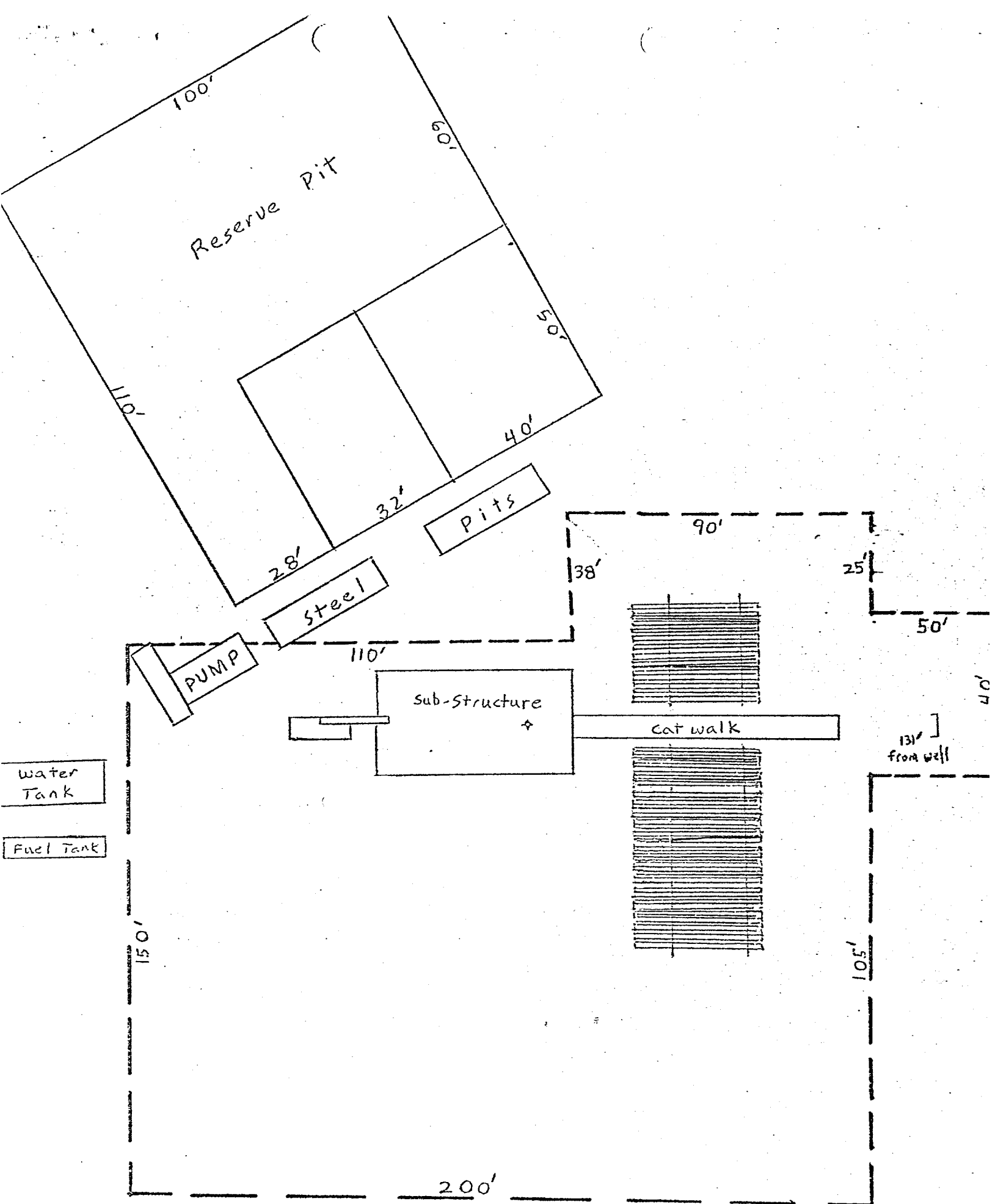


900 Series
Rig #5

RECEIVED

SEP 23 1974

U. S. GEOLOGICAL SURVEY
ARTESIA, NEW MEXICO



OIL CONSERVATION COMMISSION

P. O. BOX 2088

SANTA FE, NEW MEXICO 87501

RECEIVED

May 10, 1974

MAY 15 1974

O. C. C.
ARTESIA, OFFICE

C
William G. McCoy
610 Security National Bank Building
P.O. Box 1352
Roswell, New Mexico 88201

Attention: Mr. W. G. McCoy

Administrative Order NSL-664 *file*

O
Gentlemen:

Reference is made to your application for approval of an unorthodox gas well location, to be located 1700 feet from the North line and 2180 feet from the East line of Section 31, Township 24 South, Range 22 East, NMPM, Eddy County, New Mexico.

P
By authority granted me under the provisions of Rule 104 F of the Commission Rules and Regulations, the above-described unorthodox location is hereby approved.

Very truly yours,

A. L. PORTER, JR.
Secretary-Director

Y
ALP/JEK/jr

cc: Oil Conservation Commission - Artesia
Oil & Gas Engineering Committee - Hobbs
U. S. Geological Survey - Artesia