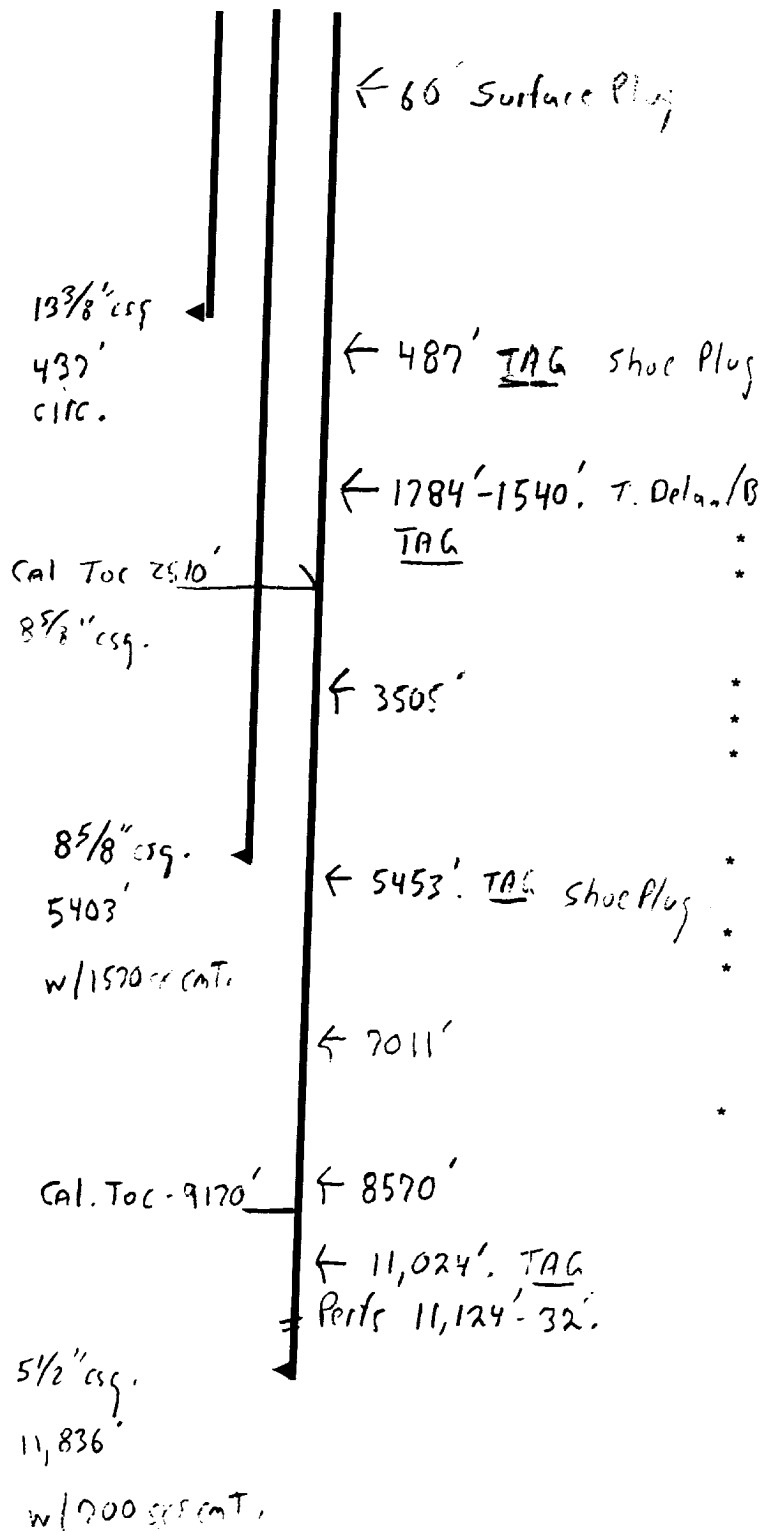


Operator Mallen Oil Company
 Well Well '3' State Com Oil
 Unit H Section 3 Township 24 Range 26
 API # 30-015-21420

TOPS

Salado	~ 620
B. Salt	21540
Delaware Sd	1734
Bone Spring	5328
Wolfcamp	8520
Penn	9980
Sprawn	10127
Atoka	10460
Monkew Limestone	11062
Monkew Clastics	11310



- * Contact OCD 24 hrs. prior to any work done.
- * Salt gel mud consisting of 10# brine with 25# of gel per barrel must be placed between each plug.
- * Install dry hole marker as per Rule 202.B.2
- * Plugs are to be set from point indicated up.
- * Plugs must not be less than 100' or 25 Sacks of cement, whichever is greater, unless specifically indicated.
- * Shoe and stub plugs will be 50' above and below shoe or stub and tagged.
- * Surface plug will be from 0' - 60'
- * Where plugs are required, cement must be placed inside and outside of all casing string(s) in the correct footage or sacks required, if no cement exists.
- * Plugs to be tagged will be indicated.