

NEW MEXICO OIL CONSERVATION COMMISSION
WELL LOCATION AND ACREAGE DEDICATION PLAT

Form C-102
Supersedes C-128
Effective 1-1-65

All distances must be from the outer boundaries of the Section

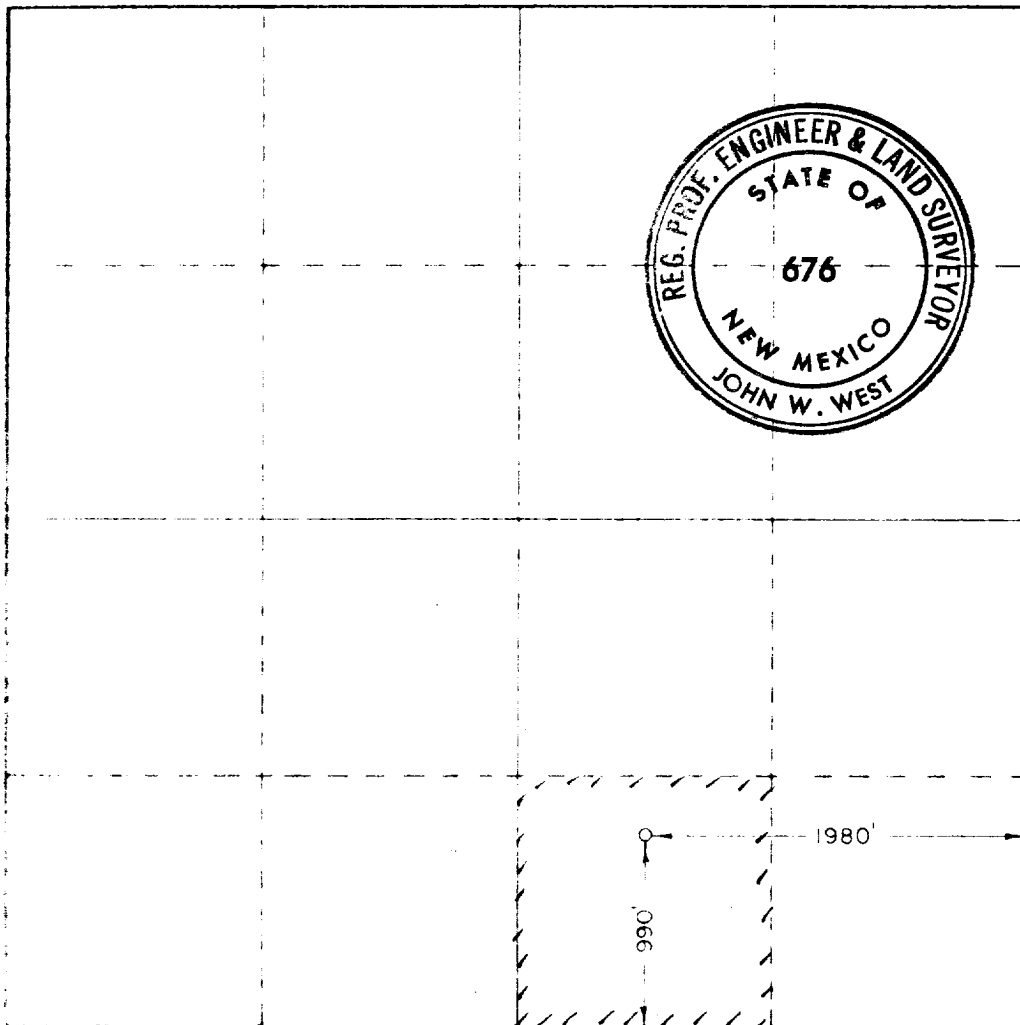
Texas American Oil Corporation			Lease Todd 26 Federal		Well No. 7
Section O	26	Range 23 South	31 East	County Eddy	
Acreage 990		feet from the South		1980	feet from the East
Elev. 3445.8		Fronting Cherry Canyon		Dedicated Acreage 40 Acres	
		Front Sand Dunes (Cherry Canyon)			

- Outline the acreage dedicated to the subject well by colored pencil or hatchure marks on the plat below.
- If more than one lease is dedicated to the well, outline each and identify the ownership thereof (both as to working interest and royalty).
- If more than one lease of different ownership is dedicated to the well, have the interests of all owners been consolidated by communitization, unitization, force-pooling, etc?

☐ Yes ☐ No If answer is "yes" type of consolidation _____

If answer is "no" list the owners and tract descriptions which have actually been consolidated. (Use reverse side of this form if necessary.) _____

No allowable will be assigned to the well until all interests have been consolidated (by communitization, unitization, forced-pooling, or otherwise) or until a non-standard unit, eliminating such interests, has been approved by the Commission.



CERTIFICATION

I hereby certify that the information contained herein is true and complete to the best of my knowledge and belief.

Name
N. T. Emanuel

Position
Engineer

Company

Texas American Oil Corporation

Date

November 18, 1974

RECEIVED
NOV 20 1974
U.S. GEOLOGICAL SURVEY
ARTESIA, NEW MEXICO
I hereby certify that the information shown on this plat was plotted from field notes of a survey made by me or under my supervision, and that the same is true and correct to the best of my knowledge and belief.

Date Surveyed

November 13, 1974

Registered Professional Engineer and/or Land Surveyor

John W. West
Certificate No. 676

11 660 90 1320 1680 1980 2310 2640 2000 1500 1000 500 0

RECEIVED
NOV 18 1974
TEXAS AMERICAN DR
CORPORATION