

NO. OF COPIES RECEIVED	6
DISTRIBUTION	
SANTA FE	
FILE	
U.S.G.S.	2
LAND OFFICE	
OPERATOR	

NEW MEXICO OIL CONSERVATION COMMISSION

**RECEIVED**

FEB 28 1975

30-018-21488  
Form C-101  
Revised 1-1-65

5A. Indicate Type of Lease STATE <input checked="" type="checkbox"/> FEE <input type="checkbox"/>
5. State Oil & Gas Lease No. L-430
7. Unit Agreement Name
8. Farm or Lease Name State SS
9. Well No. 2
10. Field and Pool, or Wildcat Undesignated
12. County Eddy
13. Proposed Depth 12,300'
19A. Formation Morrow
20. Rotary or C.T. Rotary
21. Elevations (Show whether DF, RT, etc.) 3174' Ground
21A. Kind & Status Plug. Bond On File
21B. Drilling Contractor Unknown
22. Approx. Date Work will start As soon as possible

**APPLICATION FOR PERMIT TO DRILL, DEEPEN, OR PLUG BACK**

1a. Type of Work  
b. Type of Well  
OIL WELL ☐ GAS WELL ☒ OTHER ☐  
DEEPEEN ☐ PLUG BACK ☐  
SINGLE ZONE ☒ MULTIPLE ZONE ☐

2. Name of Operator  
Mobil Oil Corporation

3. Address of Operator  
P. O. Box 633, Midland, Texas 79701

4. Location of Well  
UNIT LETTER K LOCATED 1980 FEET FROM THE South LINE  
AND 1980 FEET FROM THE West LINE OF SEC. 20 TWP. 23-S RGE. 27-E NMPM

11. Proposed Depth  
12,300'

19A. Formation  
Morrow

20. Rotary or C.T.  
Rotary

21. Elevations (Show whether DF, RT, etc.)  
3174' Ground

21A. Kind & Status Plug. Bond  
On File

21B. Drilling Contractor  
Unknown

22. Approx. Date Work will start  
As soon as possible

PROPOSED CASING AND CEMENT PROGRAM

SIZE OF HOLE	SIZE OF CAS NG	WEIGHT PER FOOT	SETTING DEPTH	SACKS OF CEMENT	EST. TOP
17-1/2"	13-3/8"	48# H-40	0 - 350'	Circulate	Surface
12-1/4"	9-5/8"	40# N-80	0-5500'	Circulate	Surface
8-3/4" or 7-7/8"	5-1/2" Liner	17# K-55 17# N-80 17# S-95	5300' - 8000' 8000' - 11000' 11000' - 12300'	Circulate	5300' - Top of Liner

BLOWOUT PREVENTER PROGRAM

Casing String	Equip. Size & API Series	No. & Type	Test Pressure PSI
Surface	12" 600	1-Blank & 1-Pipe	1000
	10" 1500	1-Hydril, 1-Blank & 1-Pipe Ram	

APPROVED FOR 90 DAYS UNLESS DRILLING COMMENCED,

EXPIRES 5-28-75

IN ABOVE SPACE DESCRIBE PROPOSED PROGRAM: IF PROPOSAL IS TO DEEPEEN OR PLUG BACK, GIVE DATA ON PRESENT PRODUCTIVE ZONE AND PROPOSED NEW PRODUCTIVE ZONE. GIVE BLOWOUT PREVENTER PROGRAM, IF ANY.

I hereby certify that the information above is true and complete to the best of my knowledge and belief.

Signed A. D. Bond A. D. Bond Title Proration Staff Assistant Date February 27, 1975

(This space for State Use)

APPROVED BY [Signature] TITLE SUPERVISOR, DISTRICT II DATE FEB 28 1975

CONDITIONS OF APPROVAL, IF ANY:

**NEW MICO OIL CONSERVATION COMMISSION**  
**WELL LOCATION AND ACREAGE DEDICATION FORM**

Form C-102  
 Supersedes C-128  
 Effective 1-1-65

All distances must be from the outer boundaries of the Section.

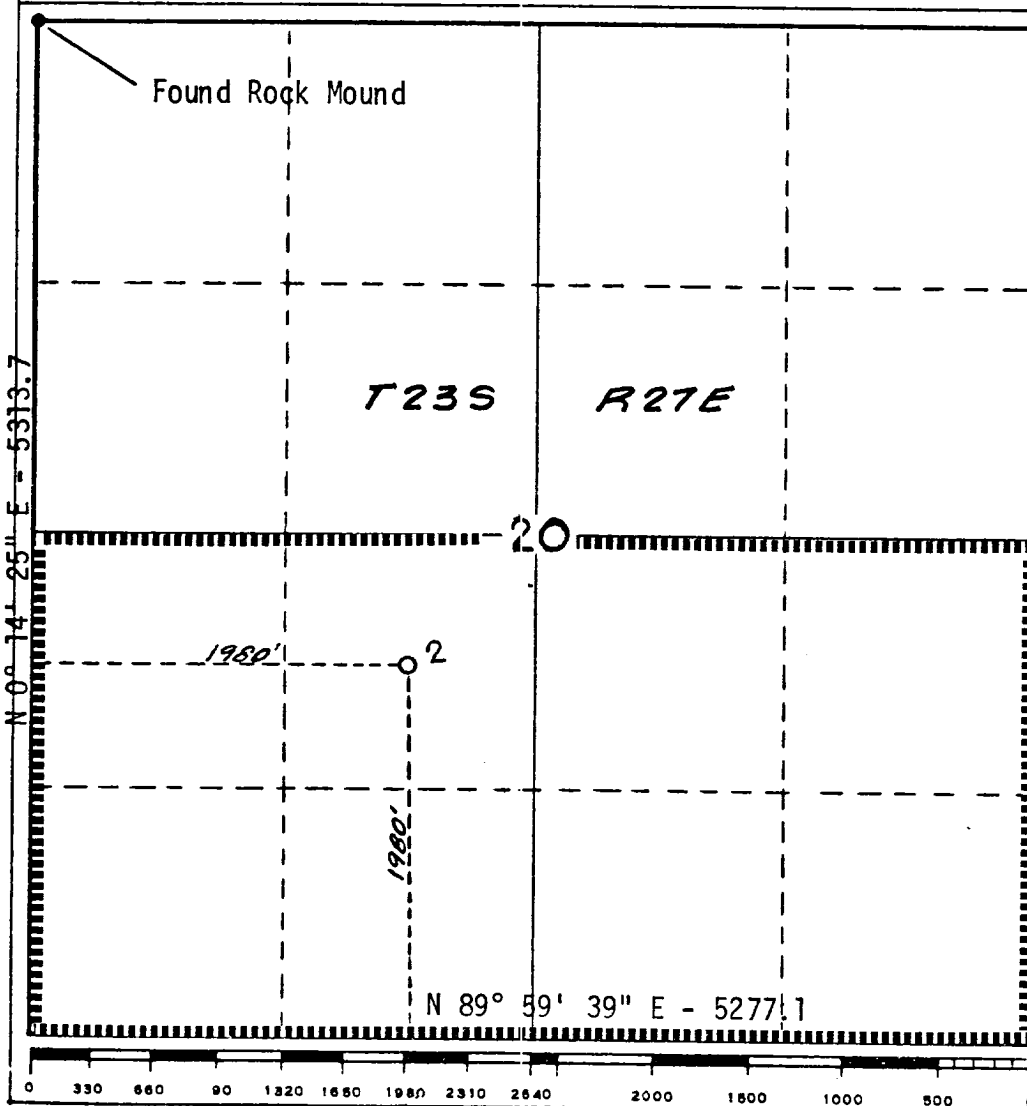
Operator <b>Mobil Oil Corporation</b>			Lease <b>State SS</b>		Well No. <b>2</b>
Unit Letter <b>K</b>	Section <b>20</b>	Township <b>23-S</b>	Range <b>27-E</b>	County <b>Eddy</b>	
Actual Footage Location of Well: <b>1980'</b> feet from the <b>South</b> line and <b>1980</b> feet from the <b>West</b> line					
Ground Level elev. <b>3174</b>	Producing Formation <b>Morrow</b>	Pool <b>Undesignated</b>		Dedicated Acreage: <b>320</b> Acres	

1. Outline the acreage dedicated to the subject well by colored pencil or hachure marks on the plat below.
2. If more than one lease is dedicated to the well, outline each and identify the ownership thereof (both as to working interest and royalty).
3. If more than one lease of different ownership is dedicated to the well, have the interests of all owners been consolidated by communitization, unitization, force-pooling, etc?

☐ Yes   ☐ No   If answer is "yes," type of consolidation \_\_\_\_\_

If answer is "no," list the owners and tract descriptions which have actually been consolidated. (Use reverse side of this form if necessary.) \_\_\_\_\_

No allowable will be assigned to the well until all interests have been consolidated (by communitization, unitization, forced-pooling, or otherwise) or until a non-standard unit, eliminating such interests, has been approved by the Commission.



**CERTIFICATION**

*I hereby certify that the information contained herein is true and complete to the best of my knowledge and belief.*

*A. D. Bond*

Name  
**A. D. Bond**

Position  
**Proration Staff Assistant**

Company  
**Mobil Oil Corporation**

Date  
**February 27, 1975**

*I hereby certify that the well location shown on this plat was plotted from field notes of actual surveys made by me or under my supervision, and that the same is true and correct to the best of my knowledge and belief.*

Date Surveyed  
**February 20, 1975**

Registered Professional Engineer and/or Land Surveyor

**No. 3959**

**Wilson D. Watson, Jr.**

Certification