

NEW MEXICO OIL CONSERVATION COMMISSION
WELL LOCATION AND ACREAGE DEDICATION PLAT

Form C-102
Supersedes C-128
Effective 1-1-65

All distances must be from the outer boundaries of the Section

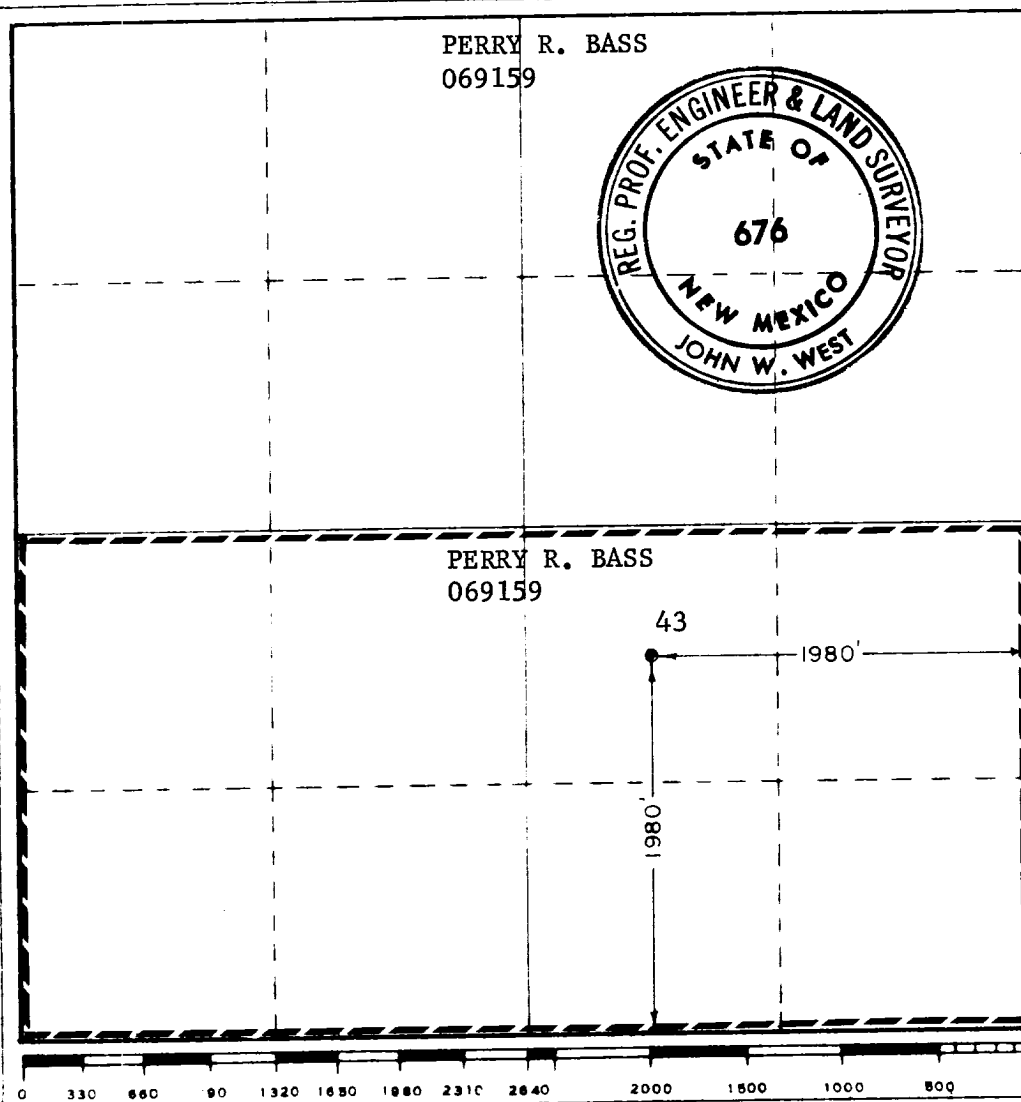
Operator: Bass Enterprises Production Co. as agent for, Perry R. Bass		Lease: Big Eddy Unit		Well No.: 43
Section: J	25	Township: 22 South	Range: 28 East	County: Eddy
A to C: Use Location of Well:				
1980 feet from the South line and		1980 feet from the East line		
Ground Elev.: 3168	Producing Formation: Morrow	Pool: Wildcat	Dedicated Acreage: 320 Acres	

1. Outline the acreage dedicated to the subject well by colored pencil or hatchure marks on the plat below.
2. If more than one lease is dedicated to the well, outline each and identify the ownership thereof (both as to working interest and royalty).
3. If more than one lease of different ownership is dedicated to the well, have the interests of all owners been consolidated by communitization, unitization, force-pooling, etc?

☐ Yes ☐ No If answer is "yes," type of consolidation _____

If answer is "no," list the owners and tract descriptions which have actually been consolidated. (Use reverse side of this form if necessary.) _____

No allowable will be assigned to the well until all interests have been consolidated (by communitization, unitization, forced-pooling, or otherwise) or until a non-standard unit, eliminating such interests, has been approved by the Commission.



CERTIFICATION

I hereby certify that the information contained herein is true and complete to the best of my knowledge and belief.

George A. Teer

Name

Staff Petroleum Engineer

Position

Bass Enterprises Production Co.

Company

February 13, 1975

Date

RECEIVED
FEB 14 1975
U.S. GEOLOGICAL SURVEY
ARTESIA, NEW MEXICO

Date Surveyed

February 1, 1975

Registered Professional Engineer
and/or Land Surveyor

John W. West

Certificate No.

676