

NE MEXICO OIL CONSERVATION COMMISSION
WELL LOCATION AND ACREAGE DEDICATION PLAT

RECEIVED

Form C-102
Supersedes C-128
Effective 1-1-65

MAY 25 1981

All distances must be from the outer boundaries of the Section.

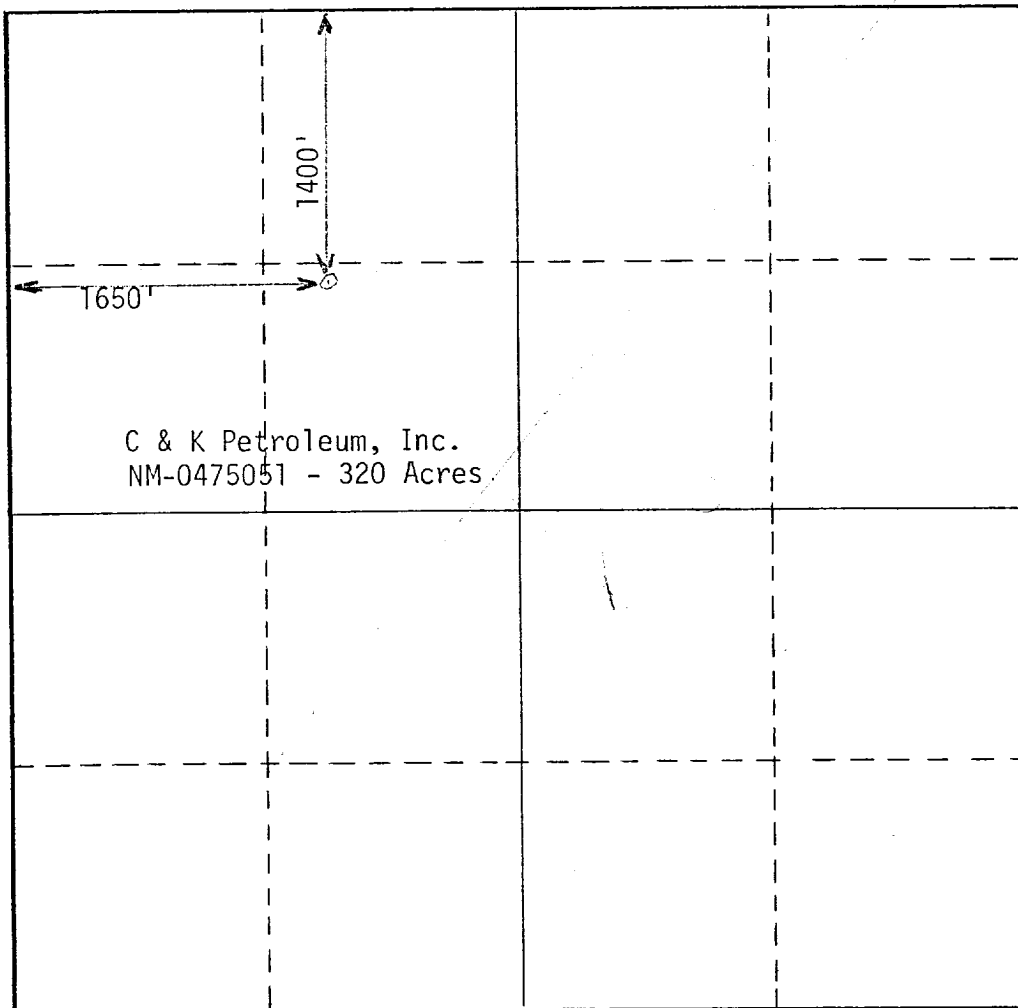
Operator C & K PETROLEUM, INC.		Lease Federal 22		Well No. 1	
Unit Letter F	Section 22	Township 24 South	Range 26 East	County Eddy	
Actual Footage Location of Well: 1400 feet from the North line and 1650 feet from the West line					
Ground Level Elev. 3315.54	Producing Formation Morrow		Pool White City Penn		Dedicated Acreage: 320 Acres

1. Outline the acreage dedicated to the subject well by colored pencil or hatchure marks on the plat below.
2. If more than one lease is dedicated to the well, outline each and identify the ownership thereof (both as to working interest and royalty).
3. If more than one lease of different ownership is dedicated to the well, have the interests of all owners been consolidated by communitization, unitization, force-pooling, etc?

☐ Yes ☒ No If answer is "yes," type of consolidation _____

If answer is "no," list the owners and tract descriptions which have actually been consolidated. (Use reverse side of this form if necessary.) _____

No allowable will be assigned to the well until all interests have been consolidated (by communitization, unitization, forced-pooling, or otherwise) or until a non-standard unit, eliminating such interests, has been approved by the Commission.



CERTIFICATION

I hereby certify that the information contained herein is true and complete to the best of my knowledge and belief.

K. Lunelle Zeeck

Name

K. Lunelle Zeeck

Position

Administrative Supervisor

Company

C & K Petroleum, Inc.

Date

May 21, 1981

I hereby certify that the well location shown on this plat was plotted from field notes of actual surveys made by me or under my supervision, and that the same is true and correct to the best of my knowledge and belief.

(See original plat.)

Date Surveyed

Registered Professional Engineer and/or Land Surveyor

Certificate No.

