

NEW MEXICO OIL CONSERVATION COMMISSION
WELL LOCATION AND ACREAGE DEDICATION PLAT

Form C-192
Supersedes C-128
Effective 1-1-65

All distances must be from the outer boundaries of the Section

SEP 28 1981

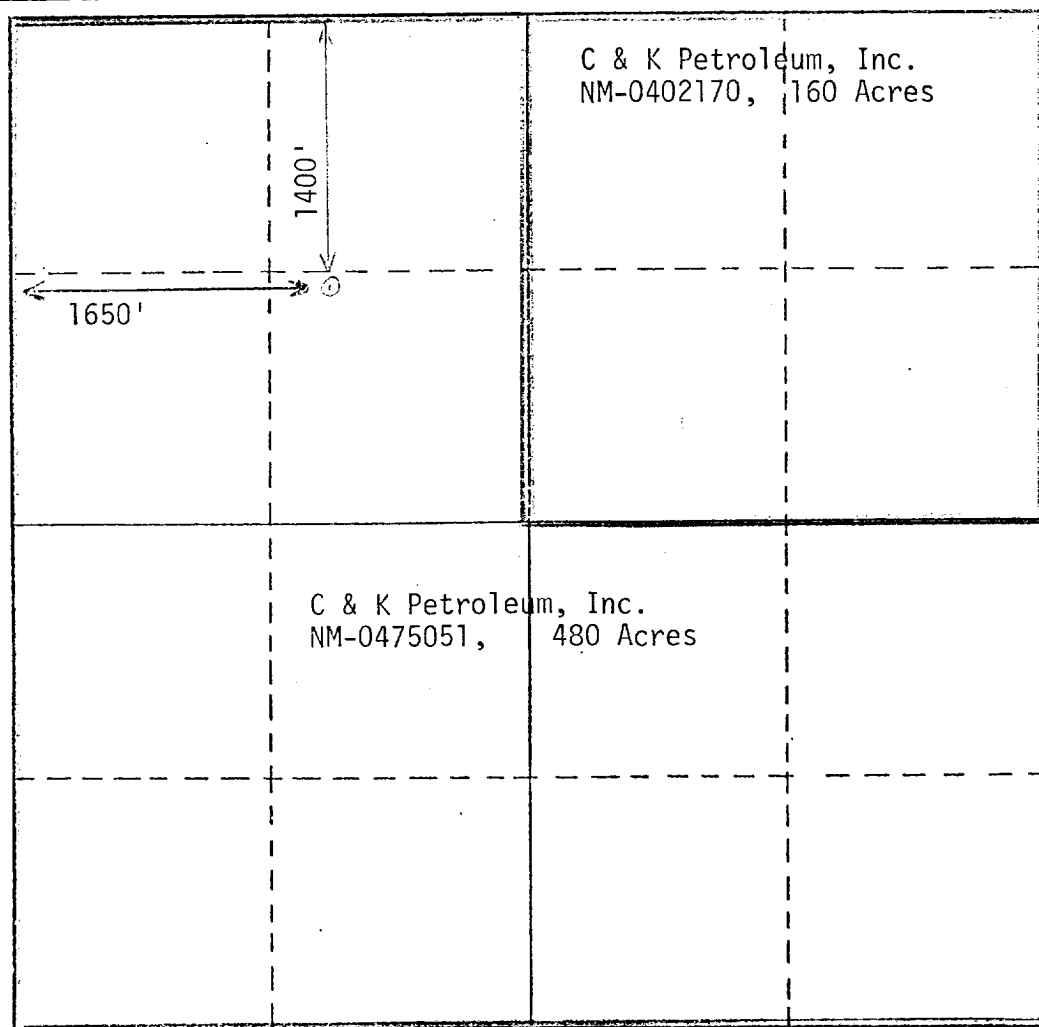
Operator C & K Petroleum, Inc.			Lease Federal 22 Com		Well No. 1
Unit Letter F	Section 22	Township 24 South	Range 26 East	County Eddy	
Actual Footage Location of Well: 1400 feet from the North line and 1650 feet from the West line					
Ground Level Elev. 3315.54	Producing Formation Morrow		Pool White City Penn		Dedicated Acreage 640 Acres

1. Outline the acreage dedicated to the subject well by colored pencil or hachure marks on the plat below.
2. If more than one lease is dedicated to the well, outline each and identify the ownership thereof (both as to working interest and royalty).
3. If more than one lease of different ownership is dedicated to the well, have the interests of all owners been consolidated by communitization, unitization, force-pooling, etc?

☒ Yes ☐ No If answer is "yes," type of consolidation Communitized

If answer is "no," list the owners and tract descriptions which have actually been consolidated. (Use reverse side of this form if necessary.)

No allowable will be assigned to the well until all interests have been consolidated (by communitization, unitization, forced-pooling, or otherwise) or until a non-standard unit, eliminating such interests, has been approved by the Commission.



CERTIFICATION

I hereby certify that the information contained herein is true and complete to the best of my knowledge and belief.

K. Lunelle Zeeck

Name
K. Lunelle Zeeck
Position
Administrative Supervisor

Company
C & K Petroleum, Inc.

Date
September 25, 1981 ✓

I hereby certify that the well location shown on this plat was plotted from field notes of actual surveys made by me or under my supervision, and that the same is true and correct to the best of my knowledge and belief.

(See original plat)

Date Surveyed

Registered Professional Engineer
and/or Land Surveyor

Certificate No.