

N. M. O. C. C. COPY
UNITED STATES
DEPARTMENT OF THE INTERIOR
GEOLOGICAL SURVEYSUBMIT IN TRIPLICATE*
(Other instructions on
reverse side)Form approved.
Budget Bureau No. 42-11425

30-015-21618

APPLICATION FOR PERMIT TO DRILL, DEEPEN, OR PLUG BACK

1a. TYPE OF WORK

DRILL ☒DEEPEN ☐PLUG BACK ☐

b. TYPE OF WELL

OIL
WELL ☒GAS
WELL ☐

OTHER

SINGLE
ZONE ☒MULTIPLE
ZONE ☐

2. NAME OF OPERATOR

AMOCO PRODUCTION COMPANY. ✓

3. ADDRESS OF OPERATOR

BOX 367, ANDREWS, TEXAS 79714

4. LOCATION OF WELL (Report location clearly and in accordance with any State requirements.)*

At surface

1980' FNL x 1980' FEL Sec. 18 (Unit G, SW/4 NE/4)

At proposed prod. zone

14. DISTANCE IN MILES AND DIRECTION FROM NEAREST TOWN OR POST OFFICE*

15. DISTANCE FROM PROPOSED*

LOCATION TO NEAREST
PROPERTY OR LEASE LINE, FT.
(Also to nearest drlg. unit line, if any)

18. DISTANCE FROM PROPOSED LOCATION*

TO NEAREST WELL, DRILLING, COMPLETED,
OR APPLIED FOR, ON THIS LEASE, FT.

21. ELEVATIONS (Show whether DF, RT, GR, etc.)

3081' GL

16. NO. OF ACRES IN LEASE

19. PROPOSED DEPTH

3450'

17. NO. OF ACRES ASSIGNED
TO THIS WELL

40

20. ROTARY OR CABLE TOOLS

ROTARY

22. APPROX. DATE WORK WILL START*

8-5-75

23.

PROPOSED CASING AND CEMENTING PROGRAM

SIZE OF HOLE	SIZE OF CASING	WEIGHT PER FOOT	SETTING DEPTH	QUANTITY OF CEMENT
12 1/4"	8 5/8"	24#	400'	Circulate.
7 1/8"	5 1/2"	14-15.5#	3400'	Sufficient to tie back into surface pipe.

- After drilling, logs shall be run and evaluations made
perforating and/or stimulating as necessary in
attempting commercial production.

- mud Program: o SCP = Water & native mud; SCP-TD = Brine
& native mud.

- BOP Program: Attached.

RECEIVED

AUG 26 1975

O. C. C.

ARTESIA OFFICE

RECEIVED
JUL 29 1975U. S. GEOLOGICAL SURVEY
ARTESIA, NEW MEXICO

24. ABOVE SPACE DESCRIBE PROPOSED PROGRAM: If proposal is to deepen or plug back, give pertinent data on subsurface locations and measured and true vertical depths. Give blowout
program, if any.

SIGNED

(This space for Federal or State office use)

PERMIT NO.

APPROVAL DATE

APPROVED BY

CONDITIONS OF APPROVAL, IF ANY

TITLE

DATE

014-USGS-ABT

1-DIV

1-SUSP

1-RRY

2-BASS

1-MARATHON

APPROVED
JUL 28 1975
H. L. BEEKWILL
ACTING DISTRICT ENGINEER

*See Instructions On Reverse Side

NEW MEXICO OIL CONSERVATION COMMISSION
WELL LOCATION AND ACREAGE DEDICATION AT

Form C-102
 Supersedes C-128
 Effective 1-1-65

All distances must be from the outer boundaries of the Section.

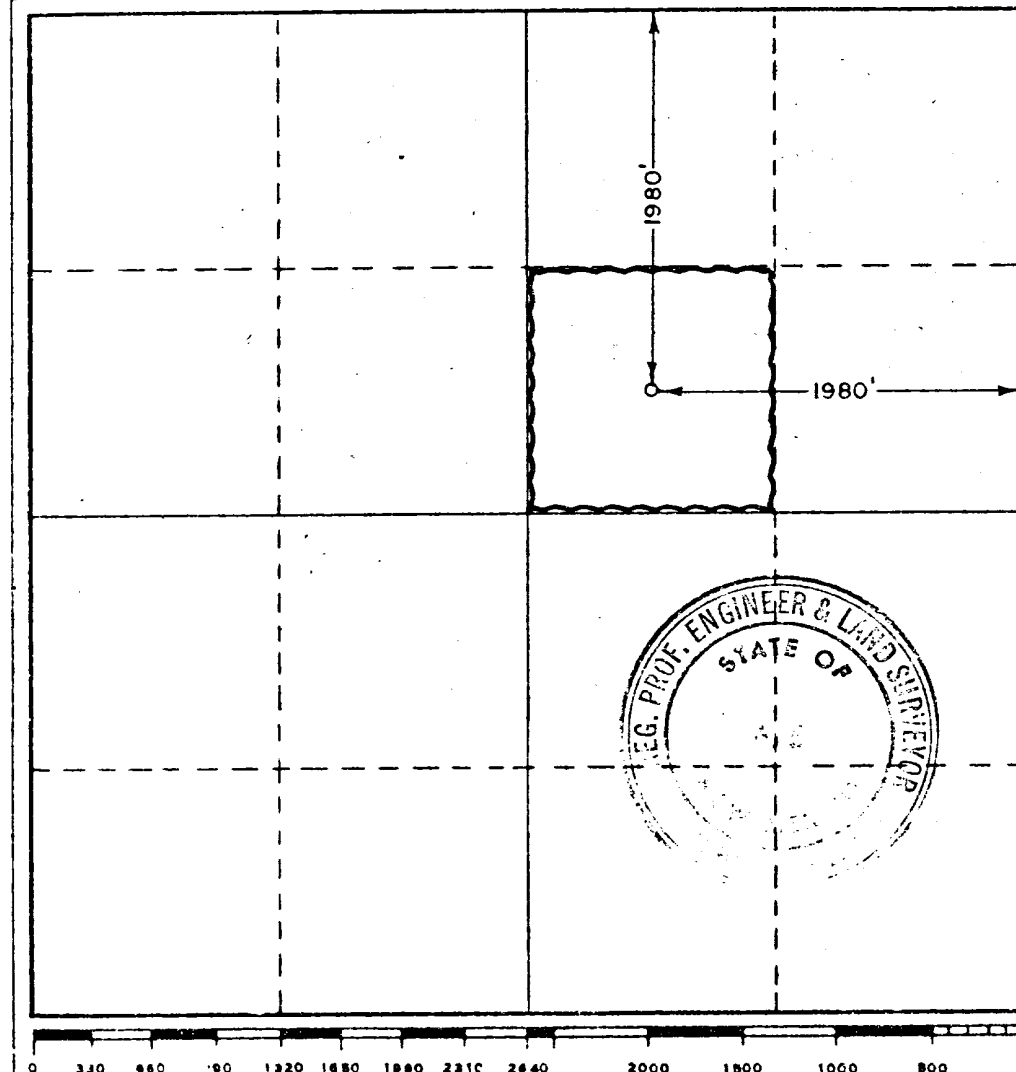
Operator Amoco Production Company			Lease Old Indian Draw Unit		Well No. 5
Unit Letter G	Section 18	Township 22 South	Range 28 East	County Eddy	
Actual Footage Location of Well: 1980 feet from the North line and 1980 feet from the East line					
Ground Level Elev. 3080.7	Producing Formation DELAWARE	Pool INDIAN DRAW-DELAWARE		Dedicated Acreage: 40 Acres	

1. Outline the acreage dedicated to the subject well by colored pencil or hachure marks on the plat below.
2. If more than one lease is dedicated to the well, outline each and identify the ownership thereof (both as to working interest and royalty).
3. If more than one lease of different ownership is dedicated to the well, have the interests of all owners been consolidated by communitization, unitization, force-pooling, etc?

☐ Yes ☐ No If answer is "yes," type of consolidation _____

If answer is "no," list the owners and tract descriptions which have actually been consolidated. (Use reverse side of this form if necessary.) _____

No allowable will be assigned to the well until all interests have been consolidated (by communitization, unitization, forced-pooling, or otherwise) or until a non-standard unit, eliminating such interests, has been approved by the Commission.



CERTIFICATION

I hereby certify that the information contained herein is true and complete to the best of my knowledge and belief.

Name *Ray R. Roakum*
 Position **ADMINISTRATIVE ASSISTANT**
 Company **AMOCO PRODUCTION COMPANY.**
 Date **JUL 28 1975**

I hereby certify that the well location shown on this plat was plotted from field notes of actual surveys made by me or under my supervision, and that the same is true and correct to the best of my knowledge and belief.

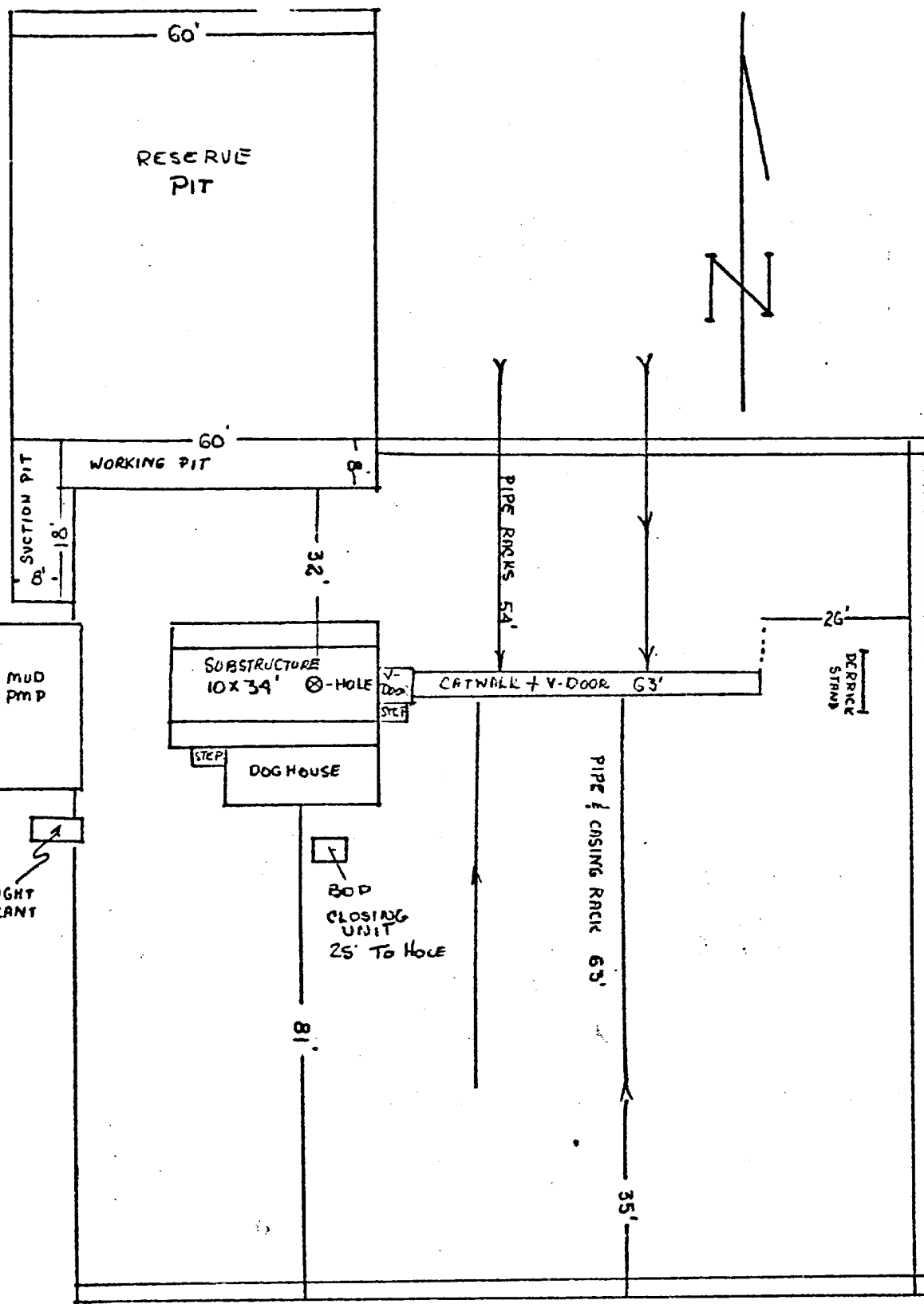
Date Surveyed **July 19, 1975**
 Registered Professional Engineer and/or Land Surveyor
John W. West
 Certificate No. **676**

100' 100' 5'
8x27'

WATER
TANK
12' x 21'

MUD
PMP

LIGHT
PLANT



Amoco Production Company

SCALE:

GENERAL RIG LAYOUT

OLD INDIAN DRAW UNIT FED # 5
UNIT G Sec. 18-22-28

DRG.
NO.

ATTACHMENT "B"
NOTES

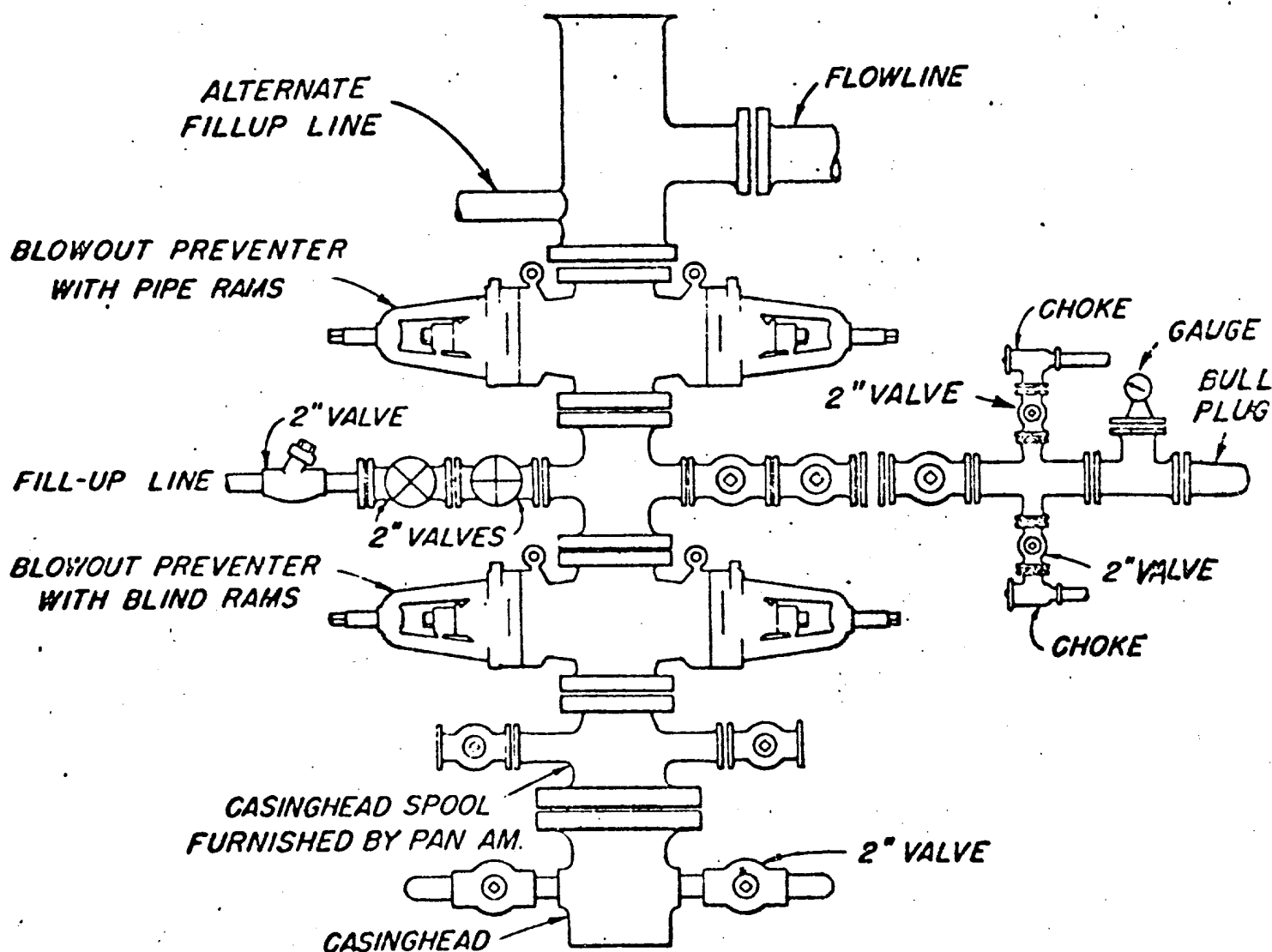
1. Blow-out preventers and master valve to be fluid operated and all fittings must be in good condition, 3,000# W.P. (6,000 p.s.i. test), minimum.
2. Equipment through which bit must pass shall be as large as the inside diameter of the casing that is being drilled through.
3. Nipple above blow-out preventer shall be same size as casing being drilled through.
4. Kelly cock required, 3,000# W.P. (6,000 p.s.i. test), minimum.
5. OMSCO or comparable safety valve must be available on rig floor at all times with proper connection or sub, 3,000# W.P. (6,000 p.s.i. test), minimum.
6. Blow-out preventers and master valve while drilling intermediate hole to 6,000' may be 2,000# W.P. (4,000 p.s.i. test), minimum.
7. Choke assembly, beyond second valve from cross, may be positioned (Optional) outside of derrick foundation.
8. Spool or cross may be eliminated if connections are available in the lower part of the blow-out preventer body.
9. Plug valves - gate valves are optional. Valves shown as 2" are minimum size.
10. Casing head and casing head spool, including attached valves, to be furnished by Pan American.
11. Rams in preventers will be installed as follows:

When drilling, use:

Top Preventer - Drill pipe rams
Bottom Preventer - Blind rams or master valve

When running casing, use:

Top Preventer - Casing rams
Bottom Preventer - Blind rams or master valve.



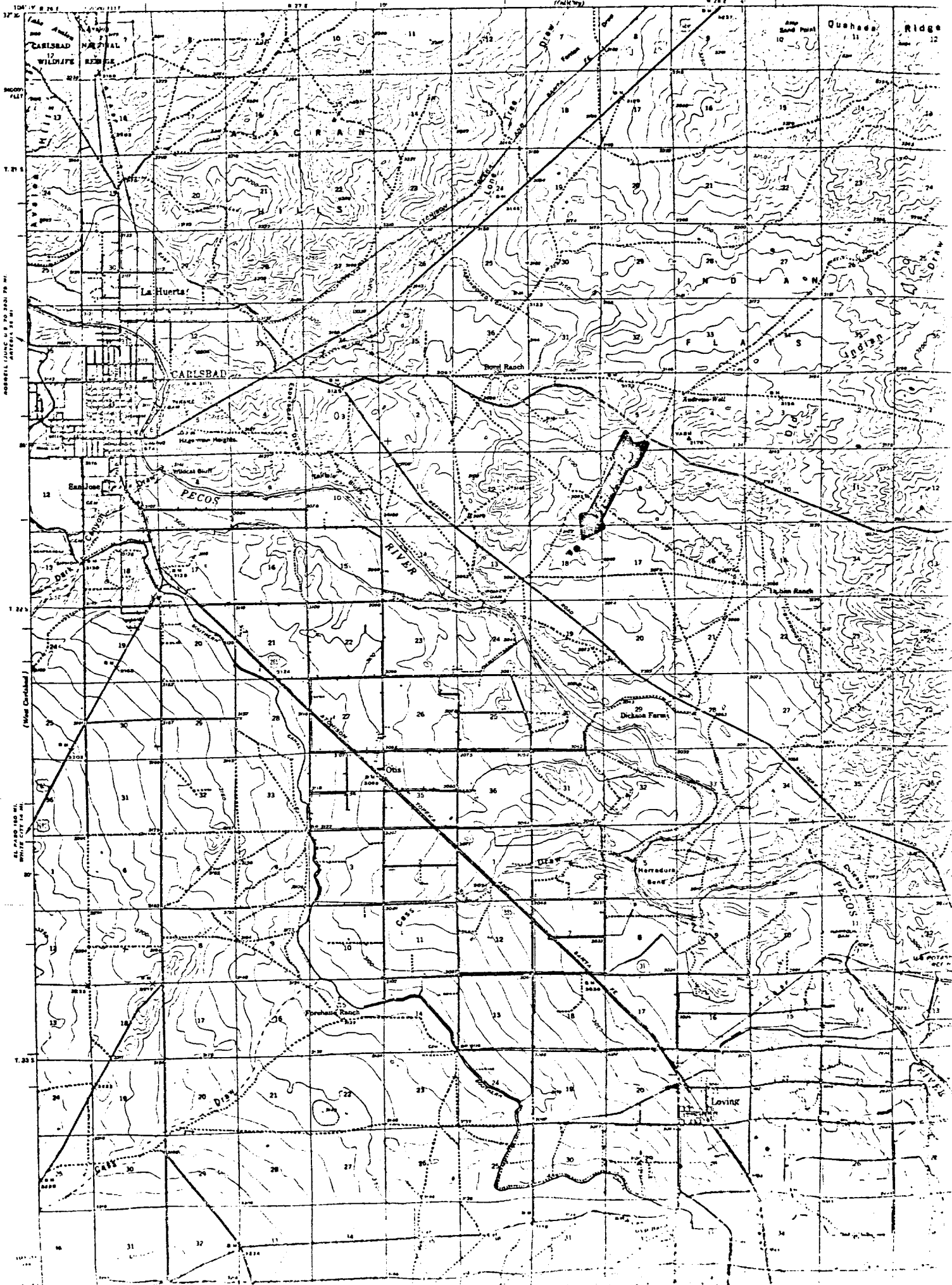
BLOWOUT PREVENTER HOOK-UP
PAN AMERICAN PETROLEUM CORP.

EXHIBIT D-1 MODIFIED

JUNE 1, 1962

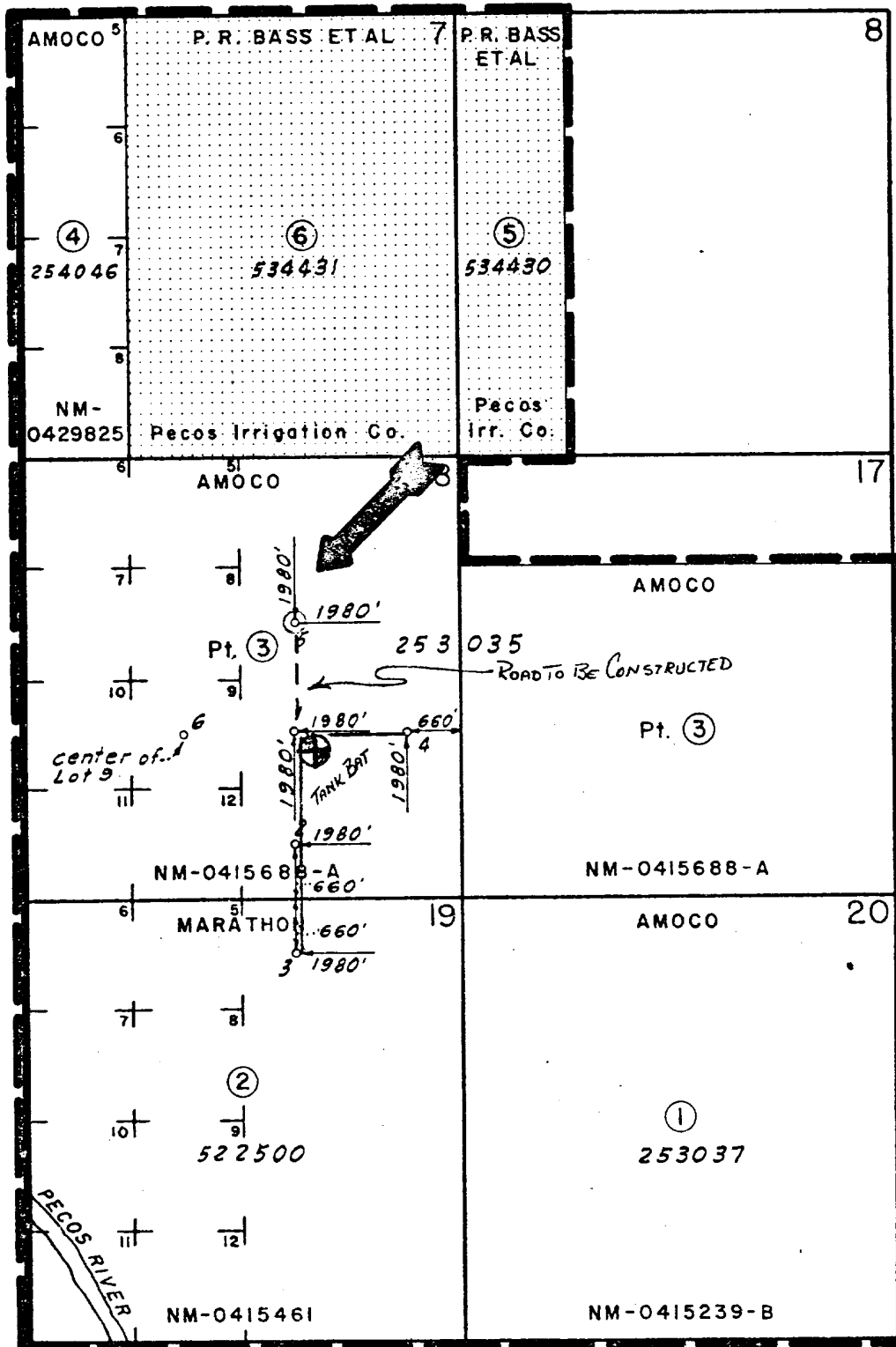
OLD INDIAN DRAW UP FEB #5
G - 18-22-28
EDDY Co. NM

UNITED STATES
DEPARTMENT OF THE INTERIOR
GEOLOGICAL SURVEY



AMOCO PRODUCTION COMPANY
OLD INDIAN DRAW UNIT FED. Well No. 5
G-18-22-28
INDIAN DRAW-DELAWARE
EDDY Co. N. M.

R 28 E



T
22
S

FEDERAL LEASES
NM-0415239-B
NM-0415461
NM-0415688-A
NM-0429825

LEGEND

- FEDERAL LAND
- FEE LAND
- ① TRACT NUMBER
- UNIT BOUNDARY

AMOCO PRODUCTION COMPANY.

Unit Lease No 522059

EXHIBIT "A"

TO ACCOMPANY

OLD INDIAN DRAW UNIT AGREEMENT
EDDY COUNTY, NEW MEXICO

SCALE: 1" = 2000'

LEASE & WELL NUMBER OLD INDIAN DRAW UNIT FED #5
LOCATION UNIT G, 18-22-28

PROPOSED DEVELOPMENT PLAN FOR SURFACE USE.

1. Existing roads including location of exit from main highway.
(SEE ATTACHED MAP)
2. Planned access roads.
(SEE ATTACHED MAP)
3. Location of existing wells
(SEE ATTACHED MAP)
4. Lateral roads to well locations
(SEE ATTACHED MAP)
5. Location of Tank Batteries & Flow Lines.
(SEE ATTACHED MAP)
6. Location and type of water supply.
BRINE & FRESH Water to be hauled - 3 to 5 Miles.
Piped from
7. Methods for handling waste disposal
All waste material will be pitted, burned, buried or hauled from location. Suitable trash pits or containers will be provided at location for containment.
8. & 9. Location of camps and airstrips.
X None SEE ATTACHED MAP
10. Location of layout to include position of rig, mud pits, reserve pits, burn pits, pipe racks, etc.
Rig Layout, etc. (SEE ATTACHED)
Drilling Pad 170' x 230' x 6" Compacted Caliche Surfaced
11. Plans for restoration of Surface
X Producing well - all pits to be cut, filled and levelled.
X Dry hole - all pits to be cut, filled and complete location cleaned and levelled.
12. Other information that may be used in evaluating the impact on environment.
APPX 1200' OF 6" THICK WATERED & CALICHE COMPACTED ROAD
FROM WELL NO. 1 ROAD R-O-W WILL SERVE AS ROUTE
FOR FLOW LINE TO TANK BATTERY.

Field personnel responsible for compliance of Development Plan for Surface Use.

O.R. WILLIAMS, HOBBS, N.M. 88240
P.O. 393-2167