

UNITED STATES
DEPARTMENT OF THE INTERIOR
GEOLOGICAL SURVEY

APPLICATION FOR PERMIT TO DRILL, DEEPEN, OR PLUG BACK

1A. TYPE OF WORK

DRILL ☒DEEPEN ☐PLUG BACK ☐

B. TYPE OF WELL

OIL ☒
WELLGAS ☐
WELL

OTHER

SINGLE ☒
ZONEMULTIPLE ☐
ZONE

2. NAME OF OPERATOR

AMOCO PRODUCTION COMPANY. ✓

3. ADDRESS OF OPERATOR

BOX 367, ANDREWS, TEXAS 79714

4. LOCATION OF WELL (Report location clearly and in accordance with any State requirements.)*

At surface

2002' FSL X 1721' FWL Sec. 18 (NE/4 SW/4)

At proposed prod. zone

14. DISTANCE IN MILES AND DIRECTION FROM NEAREST TOWN OR POST OFFICE*

15. DISTANCE FROM PROPOSED*

LOCATION TO NEAREST
PROPERTY OR LEASE LINE, FT.
(Also to nearest drlg. unit line, if any)18. DISTANCE FROM PROPOSED LOCATION*
TO NEAREST WELL, DRILLING, COMPLETED,
OR APPLIED FOR, ON THIS LEASE, FT.

21. ELEVATIONS (Show whether DF, RT, GR, etc.)

3088' GL

16. NO. OF ACRES IN LEASE

17. NO. OF ACRES ASSIGNED
TO THIS WELL

40

19. PROPOSED DEPTH

3450'

20. ROTARY OR CABLE TOOLS

ROTARY

22. APPROX. DATE WORK WILL START*

8-15-75

23.

PROPOSED CASING AND CEMENTING PROGRAM

SIZE OF HOLE	SIZE OF CASING	WEIGHT PER FOOT	SETTING DEPTH	QUANTITY OF CEMENT
12 1/2"	8 5/8"	24 #	400'	Circulate Sufficient to tie back into surface pipe.
7 7/8"	5 1/2"	14-15.5 #	3400'	

- After drilling, logs shall be run & evaluations made
perforating & stimulating as necessary in attempting
commercial production.

- Mud Program - O-SCP- Water & native mud.
SCP-TD- 13 line & "

- BOP Program - Attached.

RECEIVED

JUL 29 1975

U.S. GEOLOGICAL SURVEY
ARTESIA, NEW MEXICO

RECEIVED

AUG 26 1975

D. C. C.

ARTESIA, OFFICE

24. If proposal is to drill or deepen directionally, give pertinent data on subsurface locations and measured and true vertical depths. Give blowout
prevention information.

SIGNED

ADMINISTRATIVE ASSISTANT.

DATE

JUL 28 1975

(This space for Federal or State office use)

PERMIT NO.

APPROVAL DATE

APPROVED BY

TITLE

DATE

CONDITIONS OF APPROVAL IF ANY:

0+4- USGS ART
1- DXP
1- RRY
2- BASS
1- MARATHON

AUG 25 1975

K. L. BECKMANN
ACTING DISTRICT ENGINEER

*See Instructions On Reverse Side

**NEW MEXICO OIL CONSERVATION COMMISSION
WELL LOCATION AND ACREAGE DEDICATION PLAT**

Form C-102
Supersedes C-128
Effective 1-1-65

All distances must be from the outer boundaries of the Section.

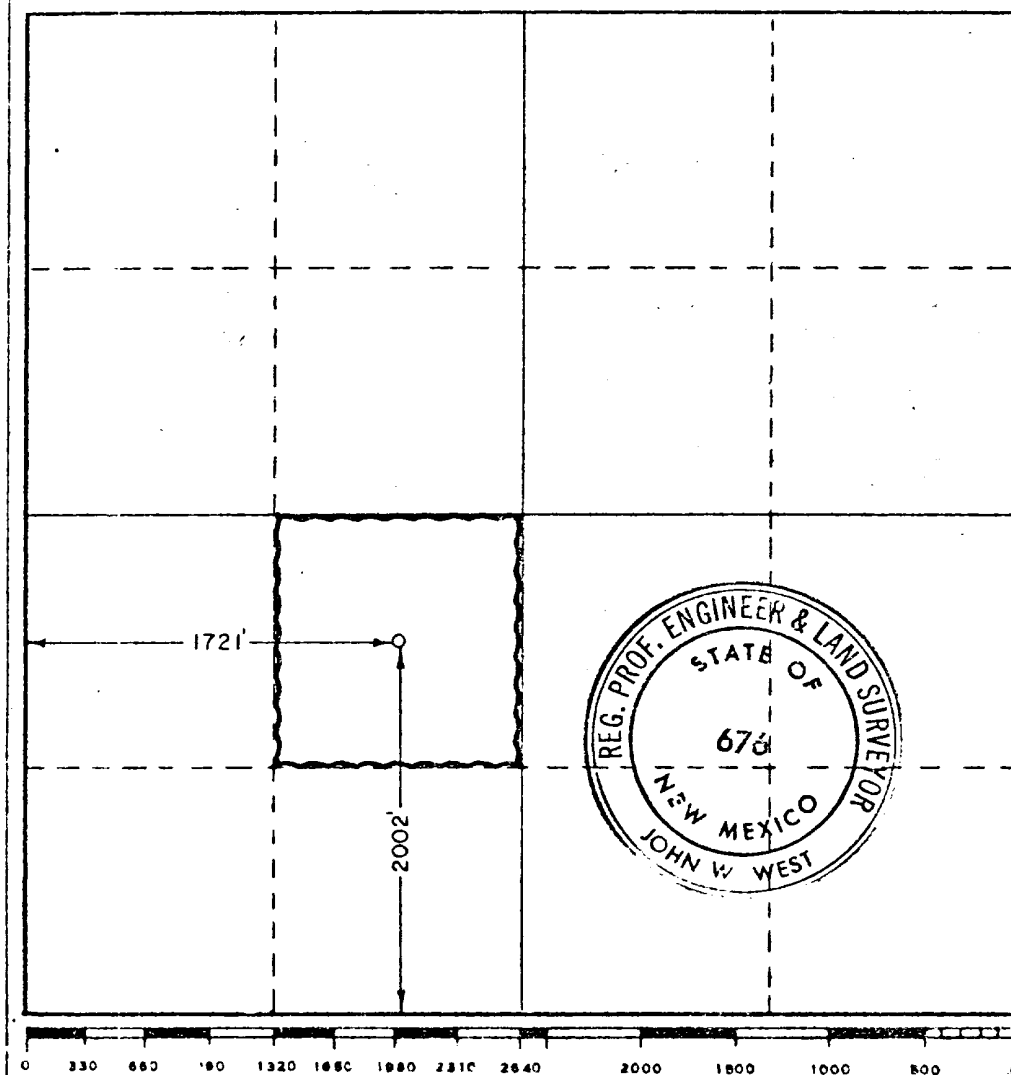
Operator Amoco Production Company			Lease Old Indian Draw Unit		Well No. 6
Unit Letter K	Section 18	Township 22 South	Range 28 East	County Eddy	
Actual Well Location of Well: 2002 feet from the South line and 1721 feet from the West line					
Ground Elev. Elev. 3088.3	Producing Formation DELAWARE		Pool Indian Draw - Delaware	Dedicated Acreage: 40 Acres	

1. Outline the acreage dedicated to the subject well by colored pencil or hatchure marks on the plat below.
2. If more than one lease is dedicated to the well, outline each and identify the ownership thereof (both as to working interest and royalty).
3. If more than one lease of different ownership is dedicated to the well, have the interests of all owners been consolidated by communitization, unitization, force-pooling, etc?

☐ Yes ☐ No If answer is "yes," type of consolidation _____

If answer is "no," list the owners and tract descriptions which have actually been consolidated. (Use reverse side of this form if necessary.) _____

No allowable will be assigned to the well until all interests have been consolidated (by communitization, unitization, forced-pooling, or otherwise) or until a non-standard unit, eliminating such interests, has been approved by the Commission.



CERTIFICATION

I hereby certify that the information contained herein is true and complete to the best of my knowledge and belief.

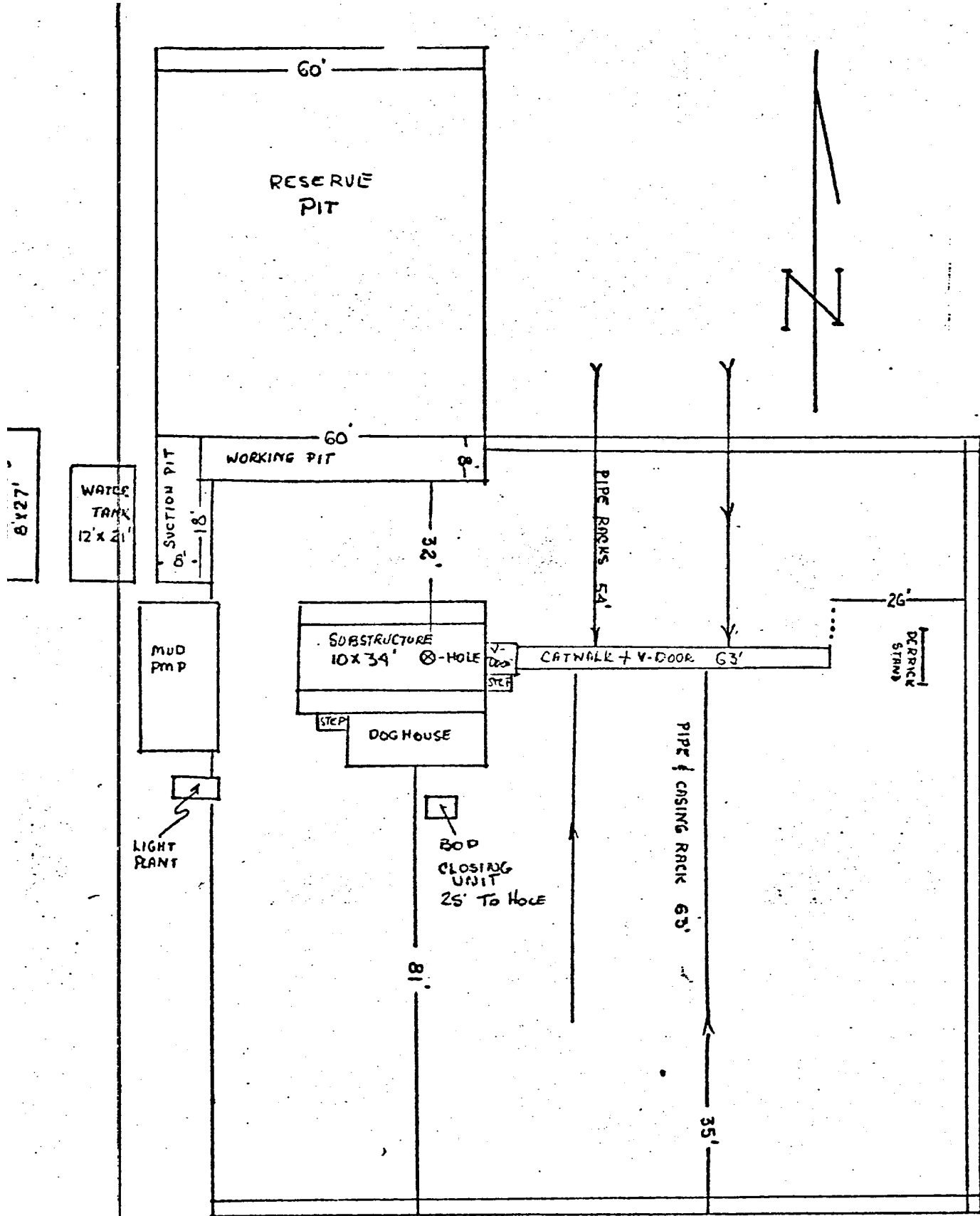
Name
John W. West
Position
ADMINISTRATIVE ASSISTANT
Company
AMOCO PRODUCTION COMPANY
Date
JUL 28 1975

I hereby certify that the well location shown on this plat was plotted from field notes of actual surveys made by me or under my supervision, and that the same is true and correct to the best of my knowledge and belief.

Date Surveyed
July 19, 1975

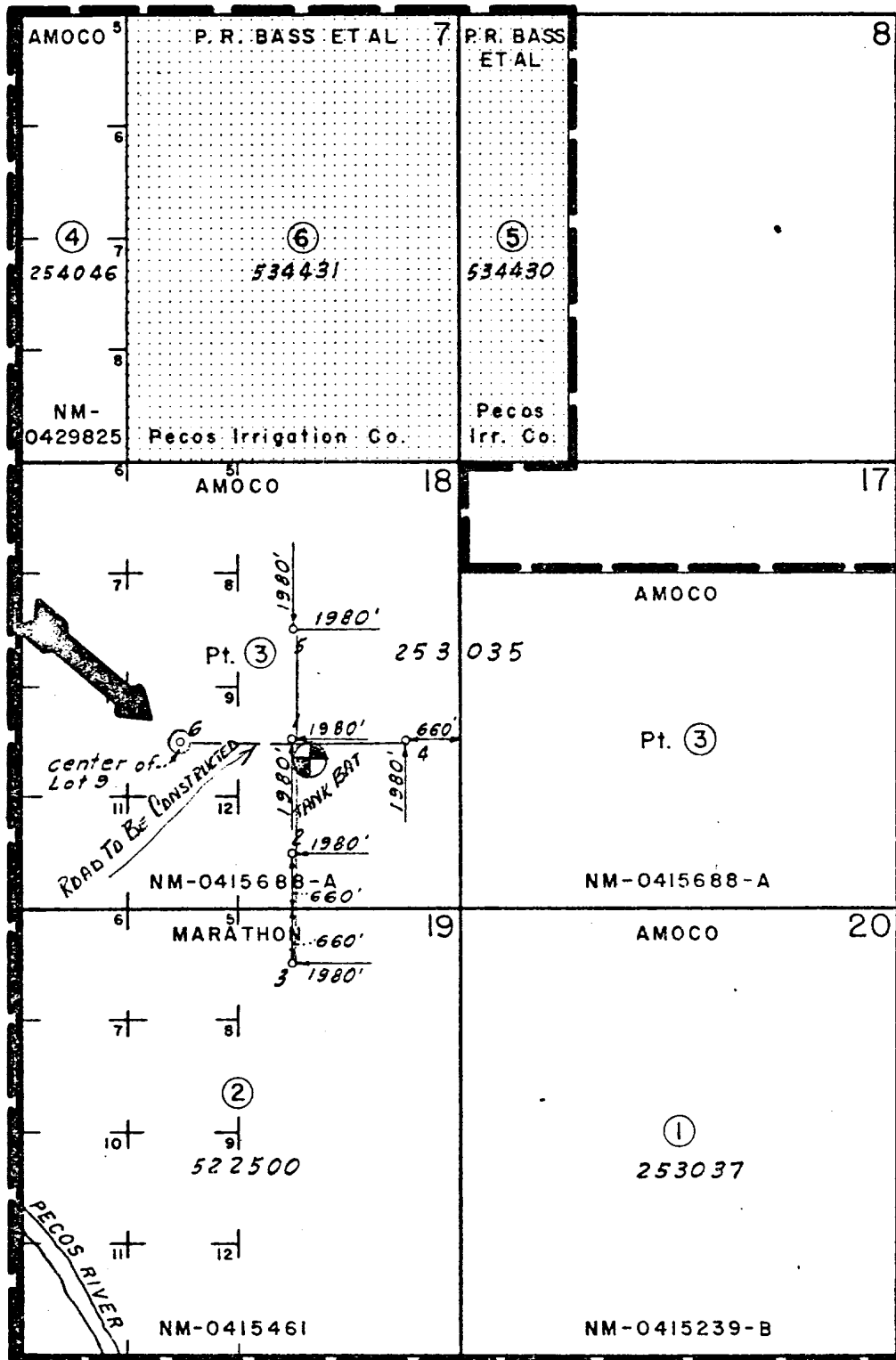
Registered Professional Engineer and/or Land Surveyor

John W. West
Certificate No. **676**



Amoco Production Company		SCALE:
GENERAL RIG LAYOUT		DRG. NO.
OLD INDIAN DRAW UNIT FED #6 UNIT K Sec. 18-22-28		

R 28 E



T
22
S

FEDERAL LEASES
NM-0415239-B, NM-0415461 NM-0415688-A NM-0429825

LEGEND

- FEDERAL LAND
- FEE LAND
- TRACT NUMBER
- UNIT BOUNDARY

AMOCO PRODUCTION COMPANY

Unit Lease No 522059

EXHIBIT "A"

TO ACCOMPANY

OLD INDIAN DRAW UNIT AGREEMENT
EDDY COUNTY, NEW MEXICO

SCALE: 1" = 2000'

NOTES

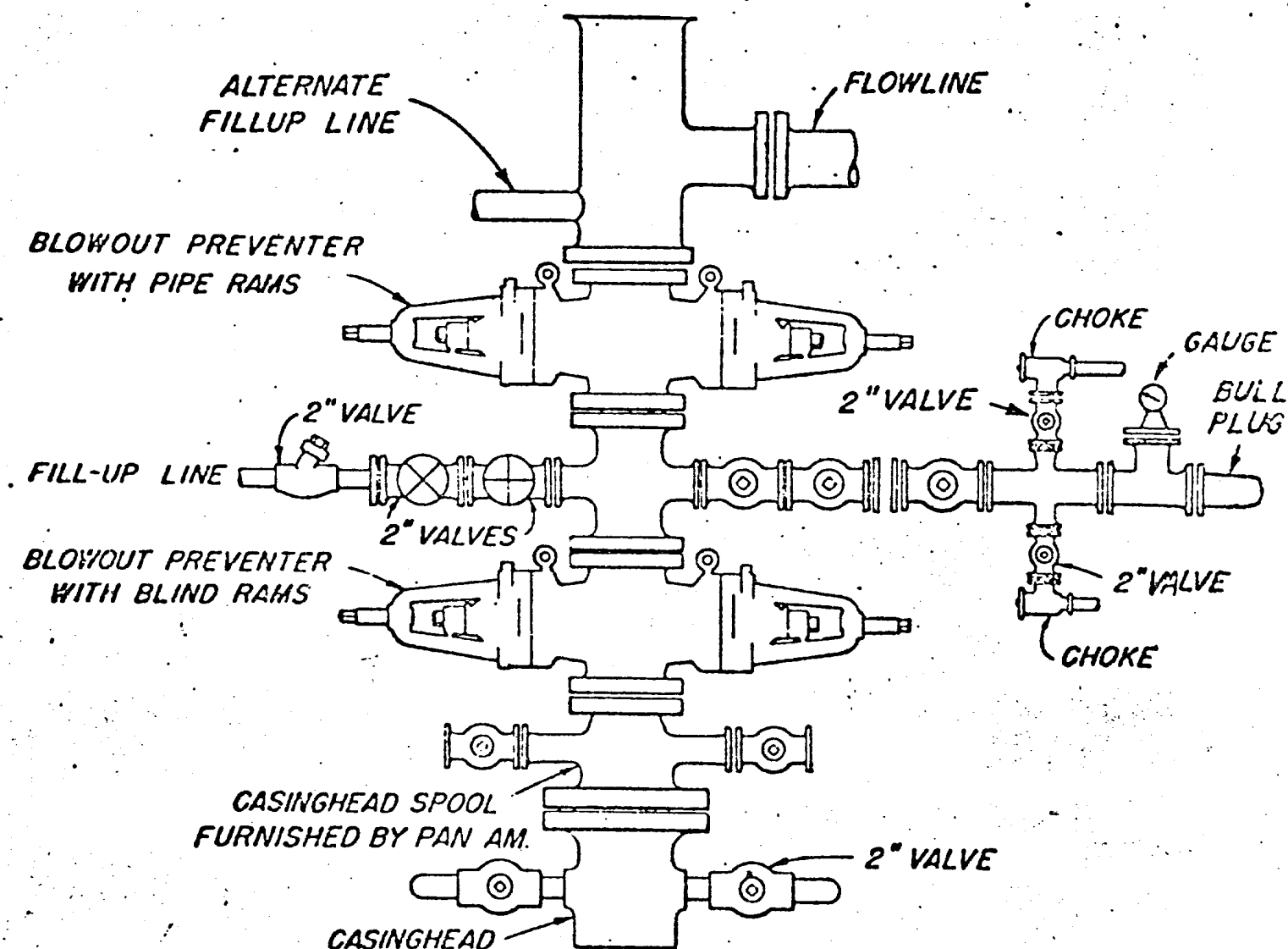
1. Blow-out preventers and master valve to be fluid operated and all fittings must be in good condition, 3,000# W.P. (6,000 p.s.i. test), minimum.
2. Equipment through which bit must pass shall be as large as the inside diameter of the casing that is being drilled through.
3. Nipple above blow-out preventer shall be same size as casing being drilled through.
4. Kelly cock required, 3,000# W.P. (6,000 p.s.i. test), minimum.
5. OMSCO or comparable safety valve must be available on rig floor at all times with proper connection or sub, 3,000# W.P. (6,000 p.s.i. test), minimum.
6. Blow-out preventers and master valve while drilling intermediate hole to 6,000' may be 2,000# W.P. (4,000 p.s.i. test), minimum.
7. Choke assembly, beyond second valve from cross, may be positioned (Optional) outside of derrick foundation.
8. Spool or cross may be eliminated if connections are available in the lower part of the blow-out preventer body.
9. Plug valves - gate valves are optional. Valves shown as 2" are minimum size.
10. Casing head and casing head spool, including attached valves, to be furnished by Pan American.
11. Rams in preventers will be installed as follows:

When drilling, use:

Top Preventer - Drill pipe rams
Bottom Preventer - Blind rams or master valve

When running casing, use:

Top Preventer - Casing rams
Bottom Preventer - Blind rams or master valve.



BLOWOUT PREVENTER HOOK-UP PAN AMERICAN PETROLEUM CORP.

EXHIBIT D-1 MODIFIED

JUNE 1, 1962

AMOCO PRODUCTION COMPANY.

OLD INDIAN DRAW UNIT FED #6
K-18-22-28, EDDY CO. N.M.
INDIAN DRAW-DELAWARE

LEASE & WELL NUMBER OLD INDIAN DRAW UNIT FED #6
LOCATION K-18-22-28, EDDY CO. N.M.

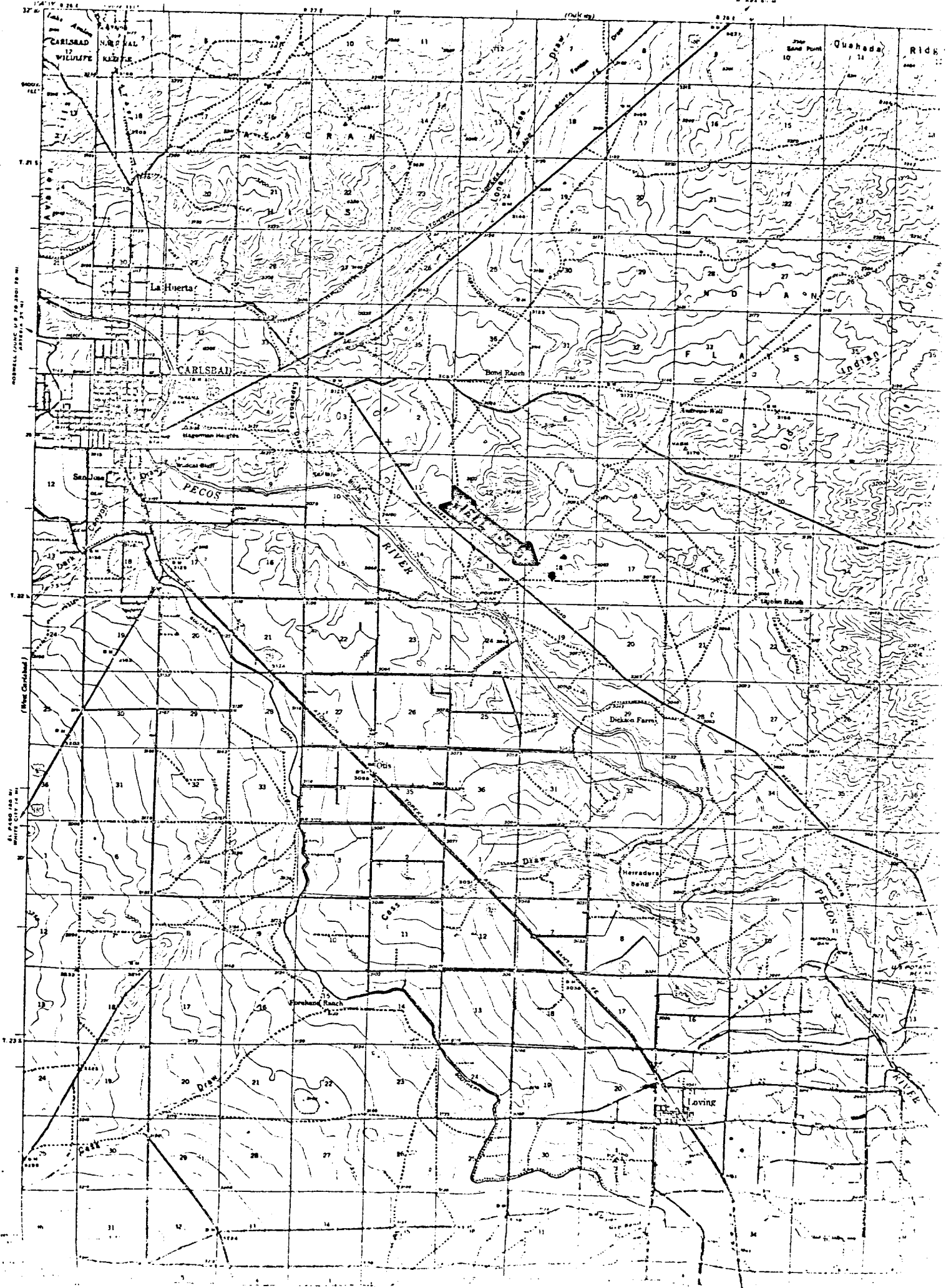
PROPOSED DEVELOPMENT PLAN FOR SURFACE USE.

1. Existing roads including location of exit from main highway.
(SEE ATTACHED MAP)
2. Planned access roads.
(SEE ATTACHED MAP)
3. Location of existing wells
(SEE ATTACHED MAP)
4. Lateral roads to well locations
(SEE ATTACHED MAP)
5. Location of Tank Batteries & Flow Lines.
(SEE ATTACHED MAP)
6. Location and type of water supply.
BRINE & FRESH Water to be hauled APPX 3 to 5 Miles.
Piped from _____
7. Methods for handling waste disposal
All waste material will be pitted, burned, buried or hauled from location. Suitable trash pits or containers will be provided at location for containment.
8. & 9. Location of camps and airstrips.
X None _____ SEE ATTACHED MAP
10. Location of layout to include position of rig, mud pits, reserve pits, burn pits, pipe racks, etc.
Rig Layout, etc. (SEE ATTACHED)
Drilling Pad 170' x 230' x 6" Compacted Caliche Surfaced
11. Plans for restoration of Surface
X Producing well - all pits to be cut, filled and levelled.
X Dry hole - all pits to be cut, filled and complete location cleaned and levelled.
12. Other information that may be used in evaluating the impact on environment.
APPX 400' OF 6" THICK WATERED & COMPACTED CALICHE ROAD
FROM EXISTING NE-SW LEASE ROAD SERVING OPERATIONS.

Field personnel responsible for compliance of Development Plan for Surface Use.

O. R. WILLIAMS, HOBBS, NM 88240
PHONE, 505-393-2167

UNITED STATES
DEPARTMENT OF THE INTERIOR
GEOLOGICAL SURVEY



AMOCO PRODUCTION COMPANY
OLD INDIAN DRAW UNIT FED #6
K-18-22-28, EDDY CO. N.M
INDIAN DRAW-DELAWARE

1870

1871

1872

1873