

Exxon Lse No. _____ N MEXICO OIL CONSERVATION COMMISS
State Lse No. _____ WELL LOCATION AND ACREAGE DEDICATION PLAT
Federal Lse No. NM-23177 All distances must be from the outer boundaries of the Section.

Form C-102
Supersedes C-128
Effective 1-1-65

Operator Exxon Corporation		Lease Laguna Grande Unit (Federal)		Well No. 1
Unit Letter I	Section 28	Township 23 South	Range 29 East	County Eddy
Actual Footage Location of Well: 1380 feet from the South line and 990 feet from the East line				
Ground Level Elev:	Producing Formation Morrow	Pool Laguna Grande Morrow	Dedicated Acreage: 320 Acres	

1. Outline the acreage dedicated to the subject well by colored pencil or hachure marks on the plat below.
2. If more than one lease is dedicated to the well, outline each and identify the ownership thereof (both as to working interest and royalty).
3. If more than one lease of different ownership is dedicated to the well, have the interests of all owners been consolidated by communitization, unitization, force-pooling, etc?

RECEIVED

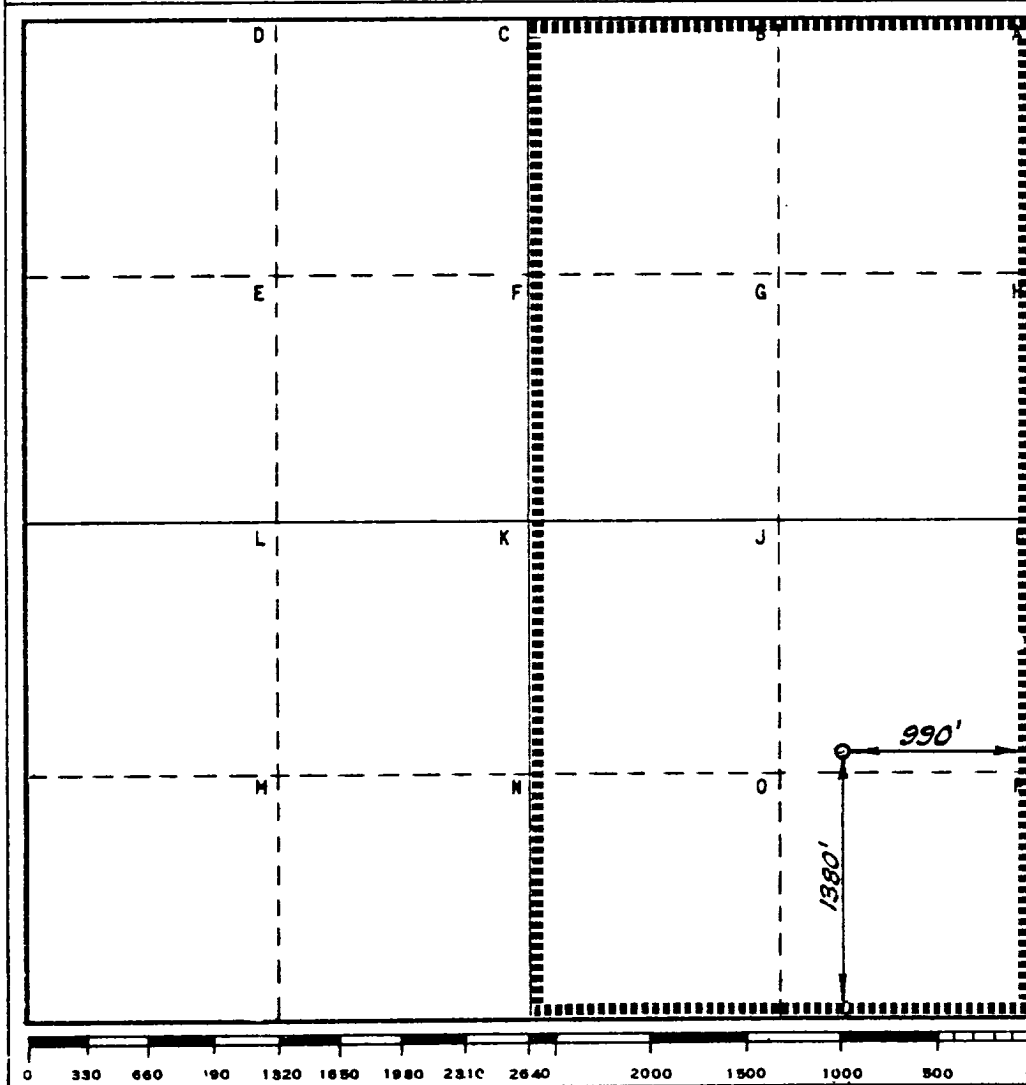
APR 21 1980

☐ Yes ☐ No If answer is "yes," type of consolidation O. C. D.

ARTESIA, OFFICE

If answer is "no," list the owners and tract descriptions which have actually been consolidated. (Use reverse side of this form if necessary.) _____

No allowable will be assigned to the well until all interests have been consolidated (by communitization, unitization, forced-pooling, or otherwise) or until a non-standard unit, eliminating such interests, has been approved by the Commission.



CERTIFICATION

I hereby certify that the information contained herein is true and complete to the best of my knowledge and belief.

Name
Melvin Kripling
Position
Proration Specialist

Company Exxon Corporation
Box 1600 Midland, Texas

Date
April 17, 1980

I hereby certify that the well location shown on this plat was plotted from field notes of actual surveys made by me or under my supervision, and that the same is true and correct to the best of my knowledge and belief.

Date Surveyed
August 13, 1975
Registered Professional Engineer
and/or Land Surveyor

H. L. Shetter
Certificate No.
1382