

30-015-22346

Form C-101  
Revised 1-1-65

## NEW MEXICO OIL CONSERVATION COMMISSION

NOV 8 1977

O. C. C.  
ALBUQUERQUE, OFFICE5A. Indicate Type of Lease  
STATE ☐ FEE ☒  
5. State Oil & Gas Lease No.7. Unit Agreement Name  
8. Firm or Lease Name  
SANDERS  
9. Well No.  
#2  
10. Field and Pool, or Wildcat  
Undesignated (Delaware)12. County  
EDDY19. Proposed Depth  
2700'  
19A. Formation  
Delaware  
20. Rotary or C.T.  
Cable Tool  
21. Elevations (Show whether DF, RT, etc.)  
3025 G.L.  
21A. Kind & Status Plug, Bond  
one well plugging  
bond blanket  
50,000.00  
21B. Drilling Contractor  
Ford Chapman Drilling Co.  
22. Approx. Date Work will start  
November 15, 1977

23.

## PROPOSED CASING AND CEMENT PROGRAM

SIZE OF HOLE	SIZE OF CASING	WEIGHT PER FOOT	SETTING DEPTH	SACKS OF CEMENT	EST. TOP (circulated)
10 3/4"	8 5/8"	24#	400 ±	125 sx	
8"	4 1/2"	10.5#	2700 ±	150 sx	

Propose to drill to TD of 2700' to test Delaware Sand utilizing Cable Tool Drilling Rig. If production is indicated, will run 4 1/2" casing in attempt to complete.

Blow-out preventer: Blind Ram Cable Tool control head.

APPROVAL VALID  
FOR 90 DAYS UNLESS  
DRILLING COMMENCED,

EXPIRES 2-14-78

IN ABOVE SPACE DESCRIBE PROPOSED PROGRAM: IF PROPOSAL IS TO DEEPEN OR PLUG BACK, GIVE DATA ON PRESENT PRODUCTIVE ZONE AND PROPOSED NEW PRODUCTIVE ZONE. GIVE BLOWOUT PREVENTER PROGRAM, IF ANY.

I hereby certify that the information above is true and complete to the best of my knowledge and belief.

Signed James H. C. Rith, Jr. Title Agent Date November 7, 1977

(This space for State Use)

APPROVED BY N. B. Gussert TITLE SUPERVISOR, DISTRICT II DATE NOV 15 1977

CONDITIONS OF APPROVAL, IF ANY:

Cement must be circulated to  
surface behind 8 5/8" casing

# NEW MEXICO OIL CONSERVATION WELL LOCATION AND ACREAGE DEDICATION AT

Supersedes O-120  
Effective 1-1-65

All distances must be from the outer boundaries of the Section.

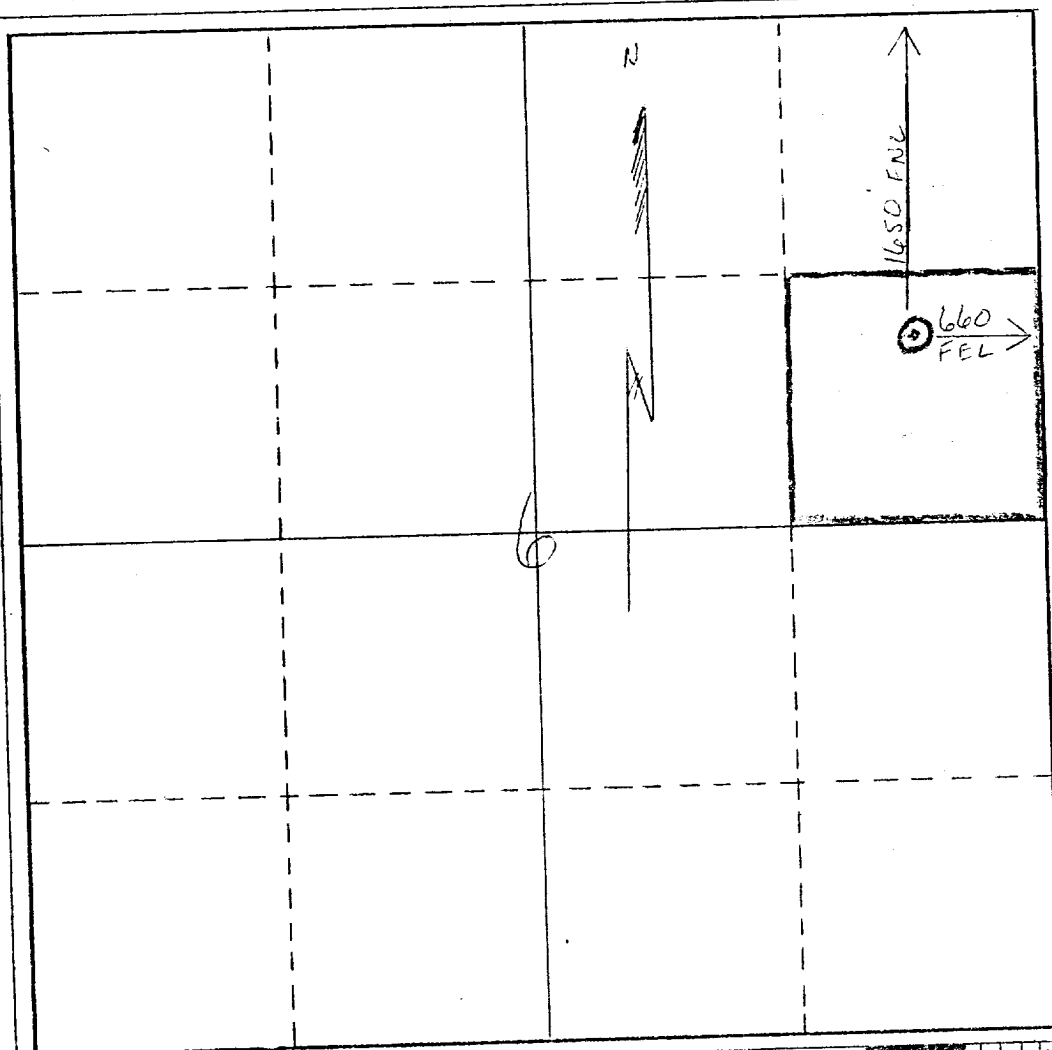
Operator <b>ORLA PETCO, INC.</b>		Lease <b>SANDERS</b>		Well No. <b>2</b>
Unit Letter <b>H</b>	Section <b>6</b>	Township <b>23-S</b>	Range <b>28-E</b>	County <b>Eddy County</b>
Actual Footage Location of Well: <b>1650</b> feet from the <b>North</b> line and <b>660</b> feet from the <b>East</b> line				
Ground Level Elev. <b>3025</b>	Producing Formation <b>Delaware Sand</b>	Pool <b>Undesignated ( Delaware )</b>	Dedicated Acreage: <b>40</b> Acres	

1. Outline the acreage dedicated to the subject well by colored pencil or hachure marks on the plat below.
2. If more than one lease is dedicated to the well, outline each and identify the ownership thereof (both as to working interest and royalty).
3. If more than one lease of different ownership is dedicated to the well, have the interests of all owners been consolidated by communitization, unitization, force-pooling, etc?

☐ Yes ☐ No If answer is "yes," type of consolidation \_\_\_\_\_

If answer is "no," list the owners and tract descriptions which have actually been consolidated. (Use reverse side of this form if necessary.) \_\_\_\_\_

No allowable will be assigned to the well until all interests have been consolidated (by communitization, unitization, forced-pooling, or otherwise) or until a non-standard unit, eliminating such interests, has been approved by the Commission.



## CERTIFICATION

I hereby certify that the information contained herein is true and complete to the best of my knowledge and belief.

*A. H. Hedden*

Name  
**A.H. HEDDEN**

Position  
**Vice-President**

Company  
**ORLA PETCO, INC**

Date  
**November 8, 1977**

I hereby certify that the well location shown on this plat was plotted from field notes of actual surveys made by me or under my supervision, and that the same is true and correct to the best of my knowledge and belief.

*Nov 9, 1977*

Date Surveyed  
*[Signature]*

Registered Professional Engineer  
and/or Land Surveyor

*N. M. 220*

Certificate No.

