

MEXICO OIL CONSERVATION COMMISSION
WELL LOCATION AND ACREAGE DEDICATION PLAT

Form C-102
Supersedes C-128
Effective 1-1-65

All distances must be from the outer boundaries of the Section

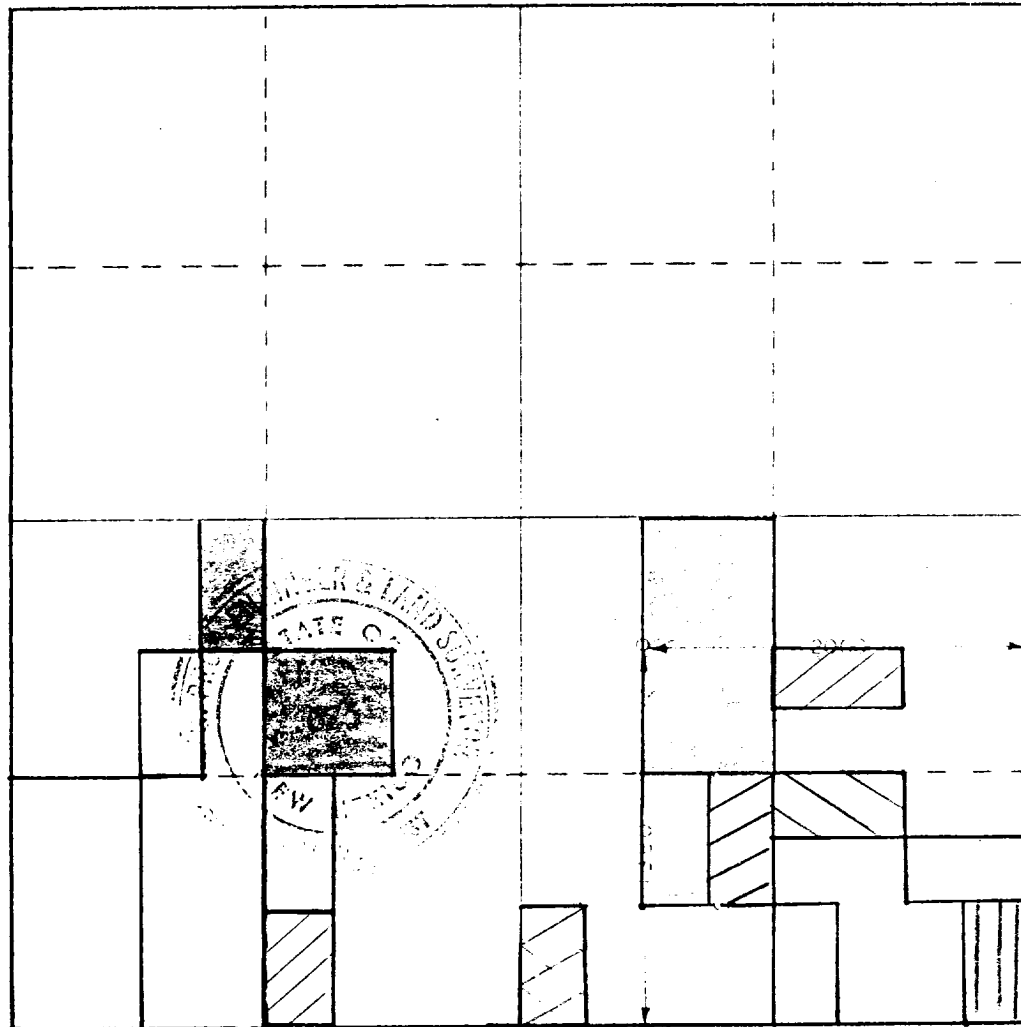
Operator H. N. G. Oil Co.			Lease Woods 9 Com.		Well No. 1
Unit Letter J	Section 9	Township 24 South	Range 28 East	County Eddy	
Actual Footage Location of Well: 2000 feet from the East line and 1980 feet from the South line					
Ground Level Elev. 3024.3	Producing Formation Morrow		Pool <i>and. W. Malaga morrow</i> Wildcat		Dedicated Acreage: 320 ACS. Acres

1. Outline the acreage dedicated to the subject well by colored pencil or hachure marks on the plat below.
2. If more than one lease is dedicated to the well, outline each and identify the ownership thereof (both as to working interest and royalty).
3. If more than one lease of different ownership is dedicated to the well, have the interests of all owners been consolidated by communitization, unitization, force-pooling, etc?

☒ Yes ☐ No If answer is "yes," type of consolidation Force-Pooling E-5519

If answer is "no," list the owners and tract descriptions which have actually been consolidated. (Use reverse side of this form if necessary.) _____

No allowable will be assigned to the well until all interests have been consolidated (by communitization, unitization, forced-pooling, or otherwise) or until a non-standard unit, eliminating such interests, has been approved by the Commission.



CERTIFICATION

I hereby certify that the information contained herein is true and complete to the best of my knowledge and belief.

Name *Ouida Roach*
Position **Ouida Roach**
Production Clerk

Company
HNG Oil Company

Date
Nov. 17, 1977

I hereby certify that the well location shown on this plat was plotted from field notes of actual surveys made by me or under my supervision, and that the same is true and correct to the best of my knowledge and belief.

Date Surveyed
Nov. 1, 1977

Registered Professional Engineer
and Land Surveyor

Charles W. Neal
Certificate No. **676**