

NEW MEXICO OIL CONSERVATION COMMISSION
WELL LOCATION AND ACREAGE DEDICATION PLAT

Form O-111
Supersedes C-128
Effective 1-1-65

All distances must be from the outer boundaries of the Section

C & K Petroleum Corp.			Lease CK 11 Federal		Acres 1
J	8	24 South	Range 26 East	County Eddy	
1780		South	1780	East	
3474.3		Morrow	White City Penn (Morrow)		Dedicated Acreage 640

RECEIVED

MAR 2 - 1978

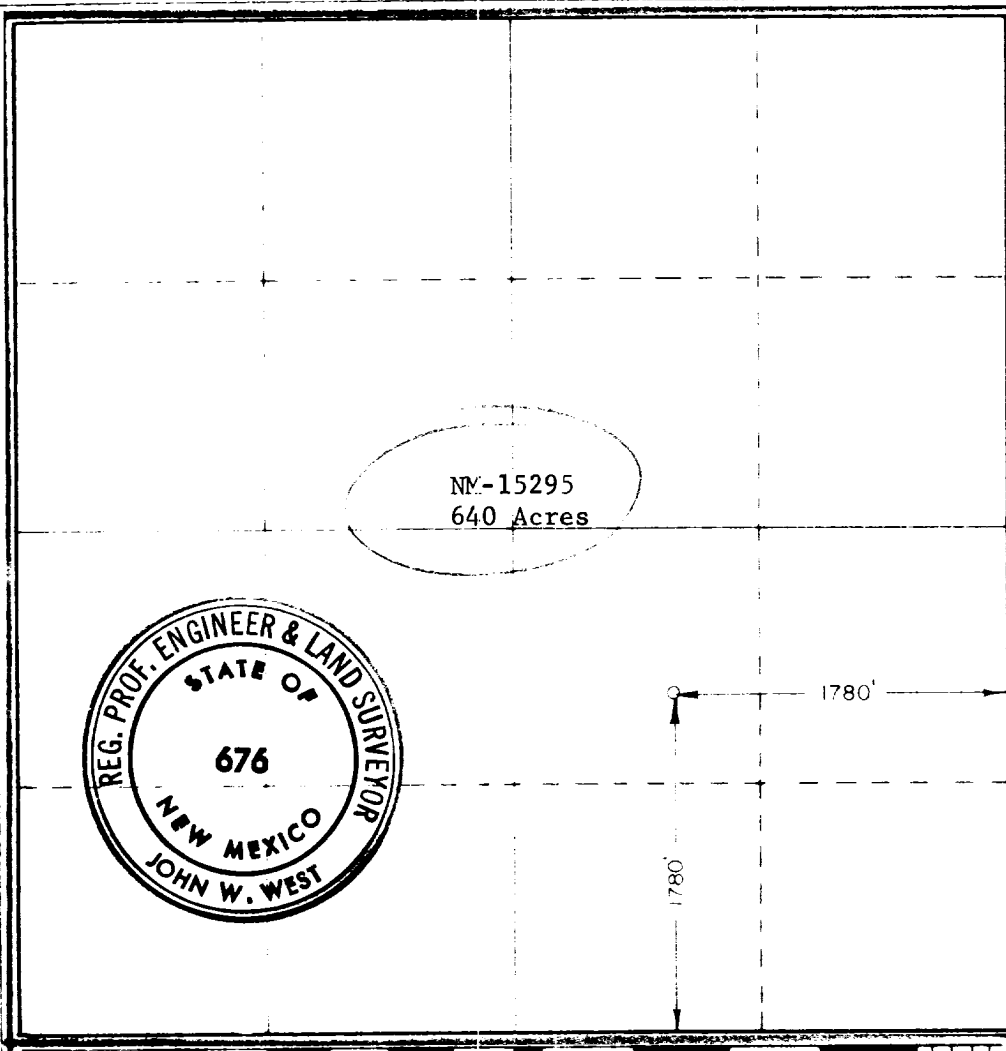
**U.S. GEOLOGICAL SURVEY
ARTESIA, NEW MEXICO**

- Outline the acreage dedicated to the subject well by colored pencil or hatchure marks on the plat below.
- If more than one lease is dedicated to the well, outline each and identify the ownership thereof (both as to working interest and royalty)
- If more than one lease of different ownership is dedicated to the well, have the interests of all owners been consolidated by communitization, unitization, force-pooling, etc? **One Lease**

☐ Yes ☐ No If answer is "yes," type of consolidation _____

If answer is "no" list the owners and tract descriptions which have actually been consolidated. (Use reverse side of this form if necessary) _____

No allowable will be assigned to the well until all interests have been consolidated (by communitization, unitization, forced-pooling, or otherwise) or until a non-standard unit, eliminating such interests, has been approved by the Commission



CERTIFICATION

I hereby certify that the information contained herein is true and complete to the best of my knowledge and belief.

John W. West

Administrative Supervisor

C & K Petroleum, Inc.

Feb. 20, 1978

I hereby certify that the well location shown on this plat was plotted from field notes of actual surveys made by me or under my supervision, and that the same is true and correct to the best of my knowledge and belief.

Date Surveyed

2/17/78

Registered Professional Engineer and/or Land Surveyor

John W. West

Certificate No. John W. West 676

Ronald J. Erdson 3239