

NEW MEXICO OIL CONSERVATION COMMISSION  
WELL LOCATION AND ACREAGE DEDICATION PLAT

RECEIVED

Form C-102  
Supersedes C-128  
Effective 1-1-65

MAY 25 1981

All distances must be from the outer boundaries of the Section.

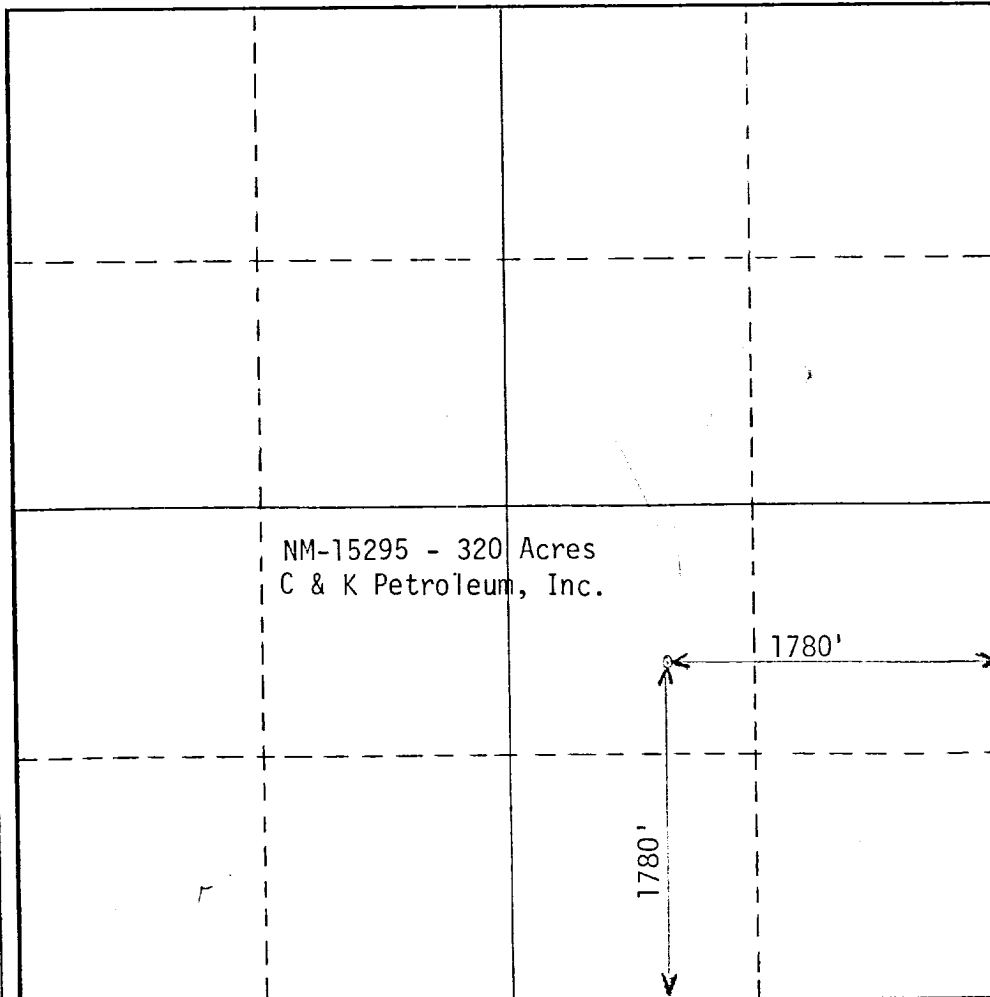
Operator C & K Petroleum, Inc.			Lease CK Federal			Well No. 1		
Unit Letter J	Section 8	Township 24 South	Range 26 East	County ARTESIA, OFFICE Eddy				
Actual Footage Location of Well: 1780 feet from the South line and 1780 feet from the East line								
Ground Level Elev. 3474.3	Producing Formation Morrow			Pool White City Penn			Dedicated Acreage: 320 Acres	

1. Outline the acreage dedicated to the subject well by colored pencil or hachure marks on the plat below.
2. If more than one lease is dedicated to the well, outline each and identify the ownership thereof (both as to working interest and royalty).
3. If more than one lease of different ownership is dedicated to the well, have the interests of all owners been consolidated by communitization, unitization, force-pooling, etc?

☐ Yes ☐ No If answer is "yes," type of consolidation \_\_\_\_\_

If answer is "no," list the owners and tract descriptions which have actually been consolidated. (Use reverse side of this form if necessary.) \_\_\_\_\_

No allowable will be assigned to the well until all interests have been consolidated (by communitization, unitization, forced-pooling, or otherwise) or until a non-standard unit, eliminating such interests, has been approved by the Commission.



CERTIFICATION

I hereby certify that the information contained herein is true and complete to the best of my knowledge and belief.

*K. Lunelle Zeeck*

Name  
K. Lunelle Zeeck  
Position  
Administrative Supervisor  
Company  
C & K Petroleum, Inc.

Date  
May 21, 1981

I hereby certify that the well location shown on this plat was plotted from field notes of actual surveys made by me or under my supervision, and that the same is true and correct to the best of my knowledge and belief.

(See original plat)

Date Surveyed

Registered Professional Engineer and/or Land Surveyor

Certificate No.