

authorized service  
sales on easy terms



WATSON DRILLING CO.  
730 West 17 Lane  
Portales, New Mexico 88130

RECEIVED

AUG 16 1978

O. C. C.  
ARTESIA, OFFICE

July 15, 1978

Harvey E. Yates Co.  
P. O. Box 1933  
Roswell, New Mexico 88201

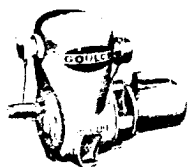
RE: Sabine 28 No. 1  
Section 28, T.23 S, R 27 E.  
Eddy County, New Mexico

Gentlemen:

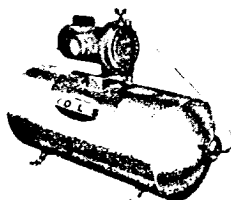
The following is a Deviation Survey of the above captioned well:

<u>Dept</u>	<u>Deviation</u>
750'	1/4 Degree
2090'	1/2 Degree
3000'	2 Degrees
3464'	3 Degrees

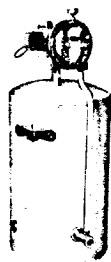
Yours Truly,  
*Walter T. Watson*  
Walter T. Watson



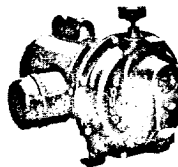
BALANCED-FLOW



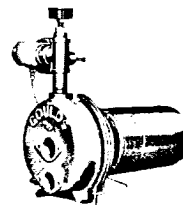
PRIME-FLOW



PERMA-FLOW

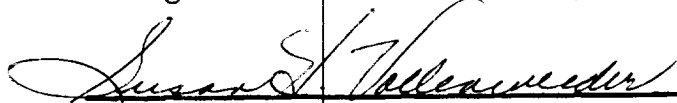


STANDARD-FLOW



STATE OF NEW MEXICO, | SS  
County of Roosevelt. |

The foregoing instrument was acknowledged before me this 14th day of  
August, 1978, by Walter T. Watson.

  
Notary Public

My Commission expires: June 11, 1980.